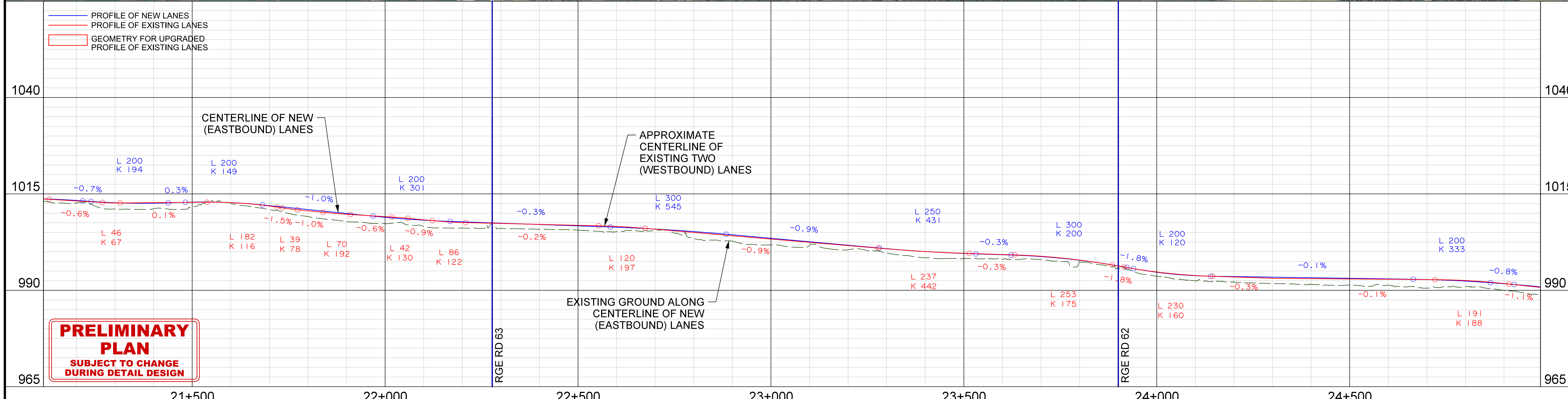
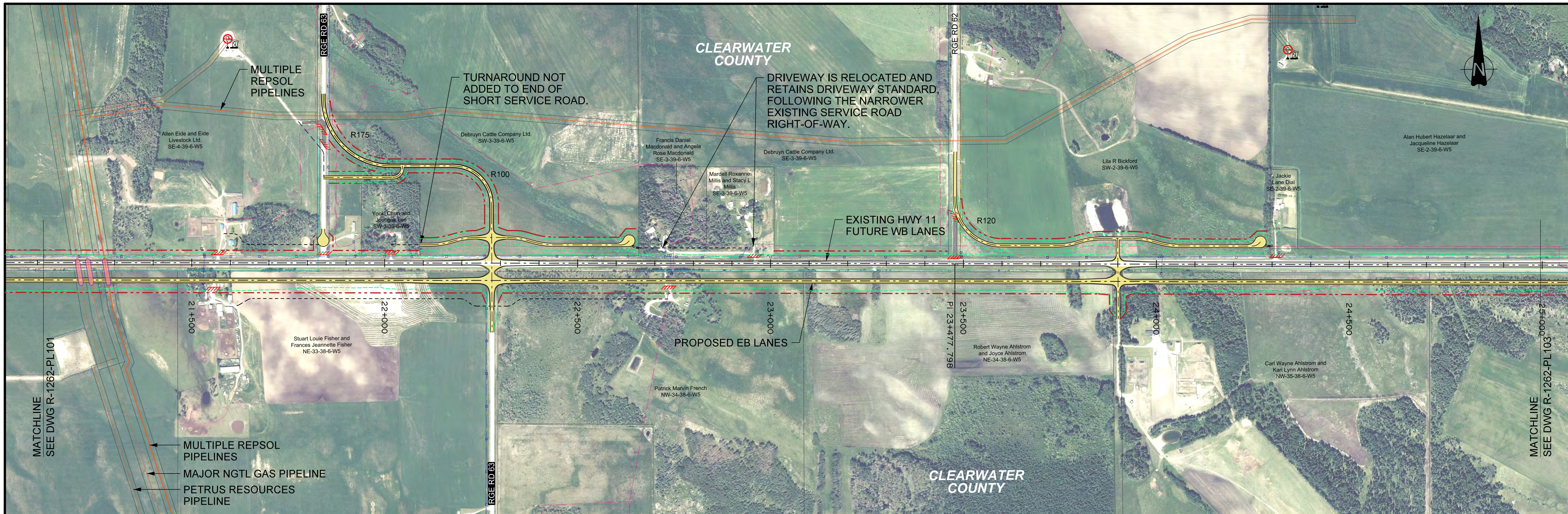
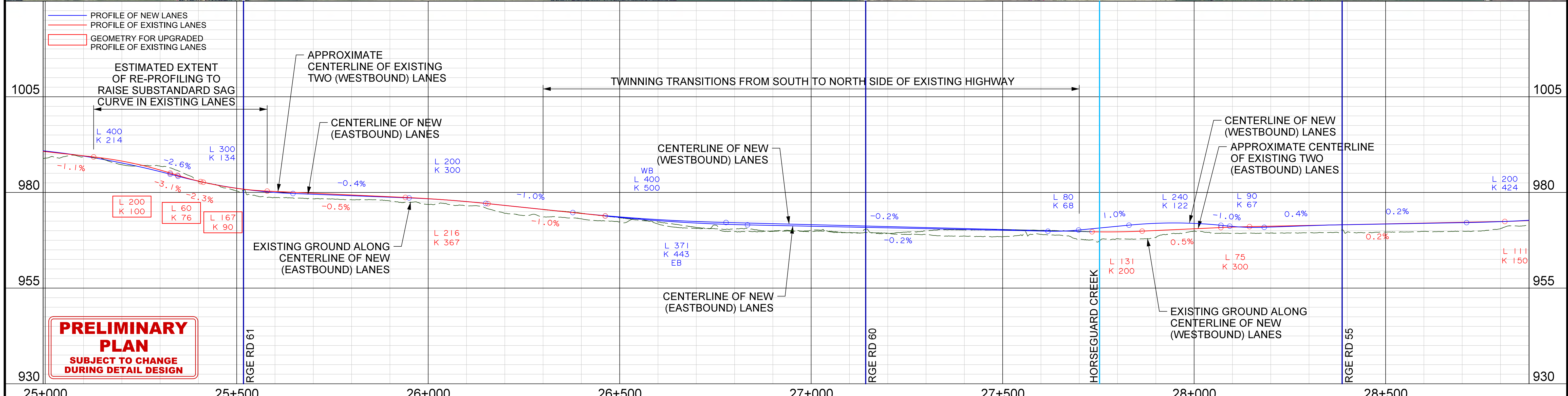
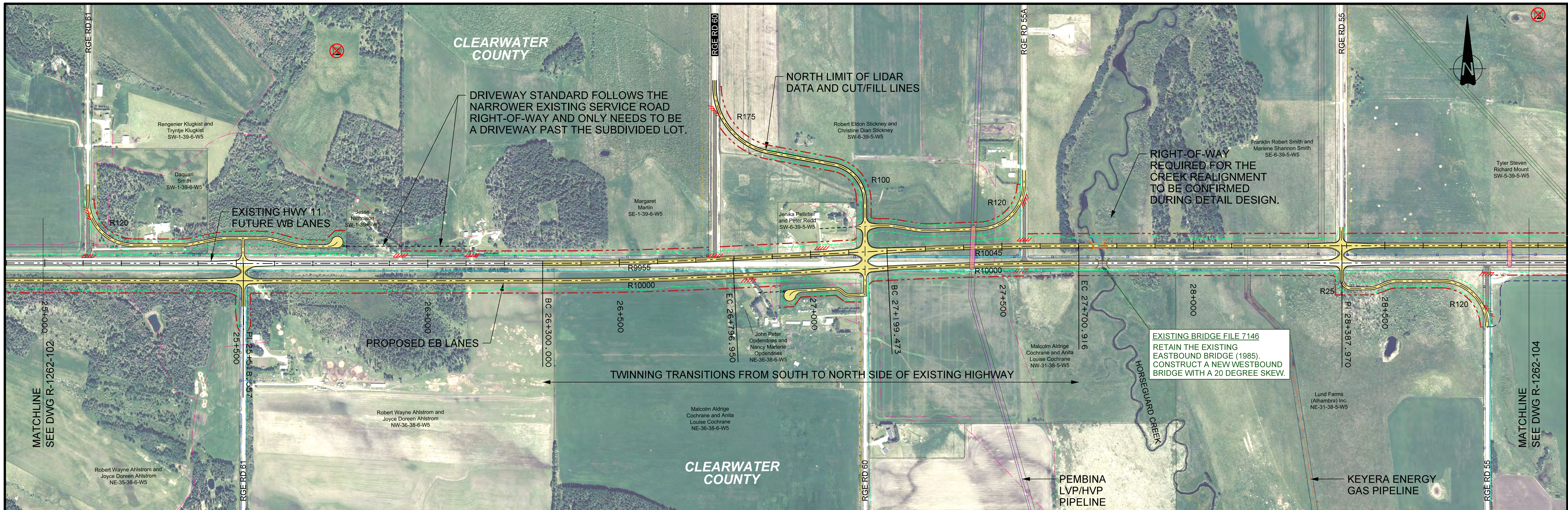


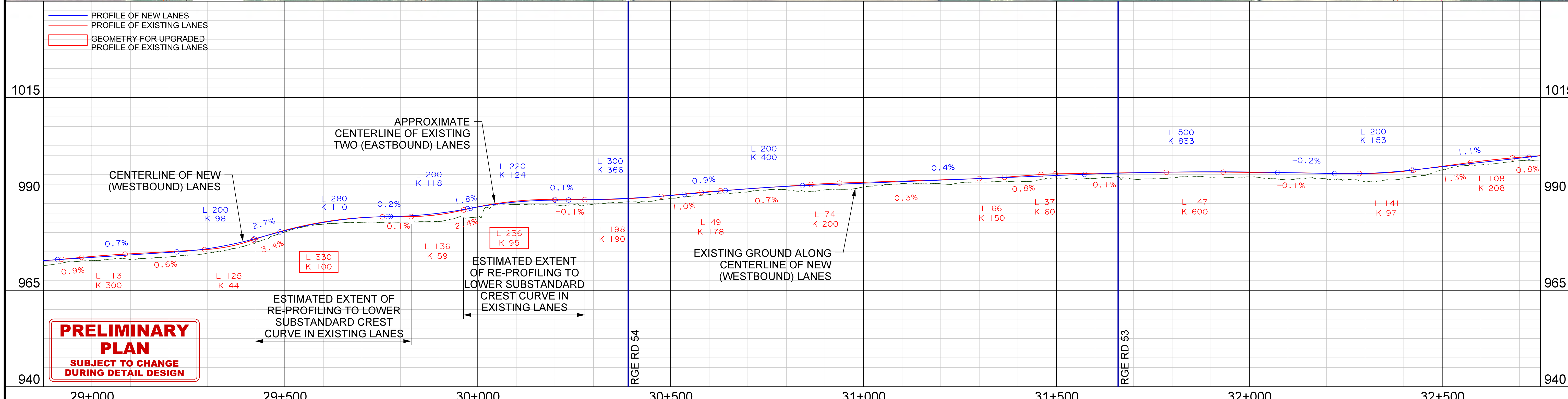
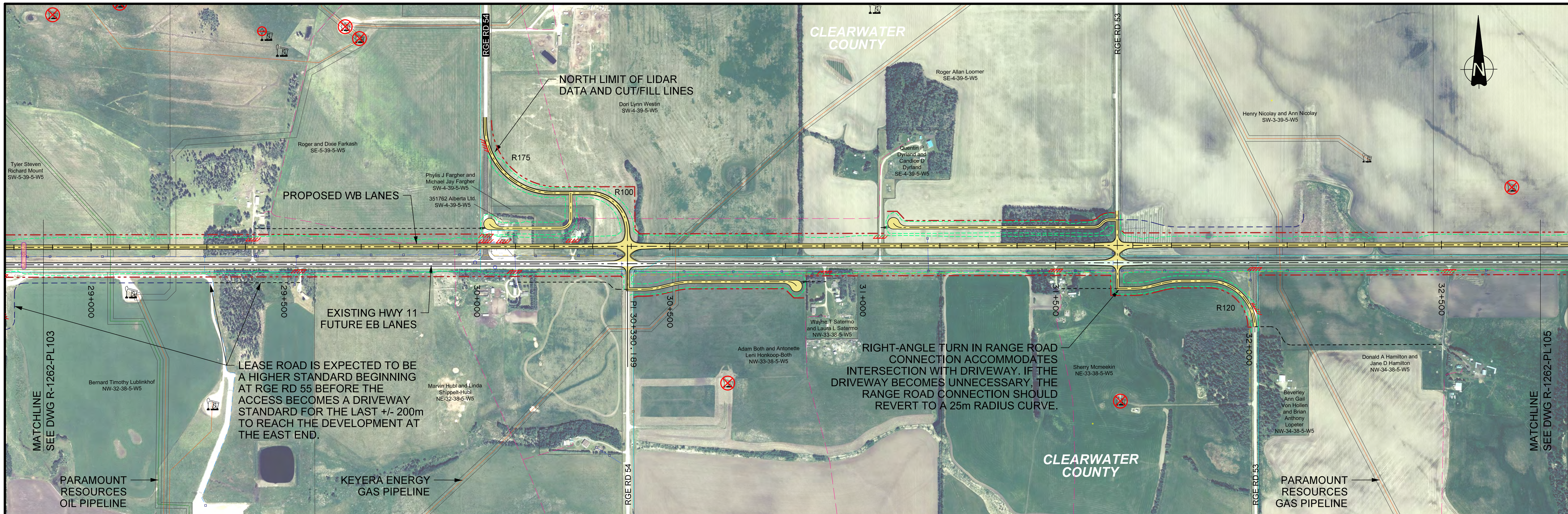
CONSULTANT 	LEGEND ROADWAY CENTERLINE POTENTIAL RW LIMIT CUT/FILL LIMIT RGE RD XX MINOR RANGE ROAD MAJOR RANGE ROAD ACCESS/INTERSECTION CLOSURE NEW / EXISTING BRIDGE CULVERT NEW / EXISTING BRIDGE TENTATIVE DRIVEWAY CENTERLINE TENTATIVE LEASE ACCESS ROAD CENTRELINE COUNTY BOUNDARY AERIAL CABLE COMMUNICATION POLE GAS CO-OP PIPELINE GAS PIPELINE LVP/HVP PIPELINE TRANSFORMER LINE TRANSMISSION LINE OVERHEAD POWER LINE OIL PIPELINE POWER LINE POWER POLE TELUS TRENCH MAJOR UTILITY CROSSING/ POTENTIAL CONFLICT STREET LIGHT TRANSMISSION TOWER WELLHEAD (ACTIVE) WELLHEAD (SUSPENDED) WELLHEAD (ABANDONED)	HIGHWAY 11 PLAN AND PROFILE HIGHWAY 11 TWINNING, FUNCTIONAL PLANNING STUDY PROJECT B: HWY 22 TO TWP RD 390		
		PROJECT NO. E00782A NOTE: The final frontage road, access road and driveway alignments and requirements will likely change in many locations during detail design and the right-of-way acquisition process.	REGION CENTRAL HIGHWAY HWY 11:10 DATE 04/26/2024 SHEET 1 OF 11	



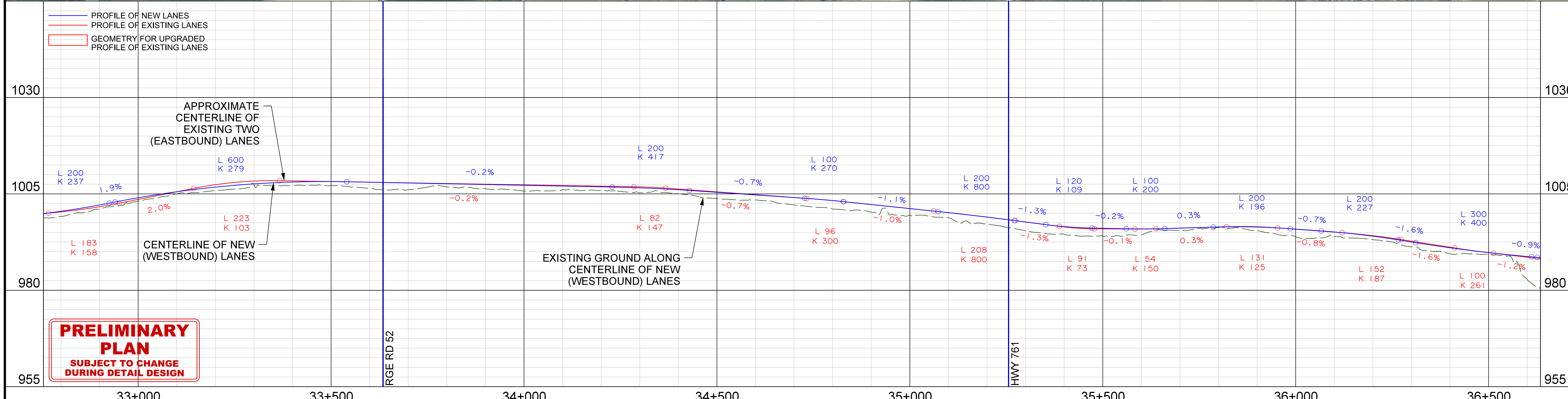
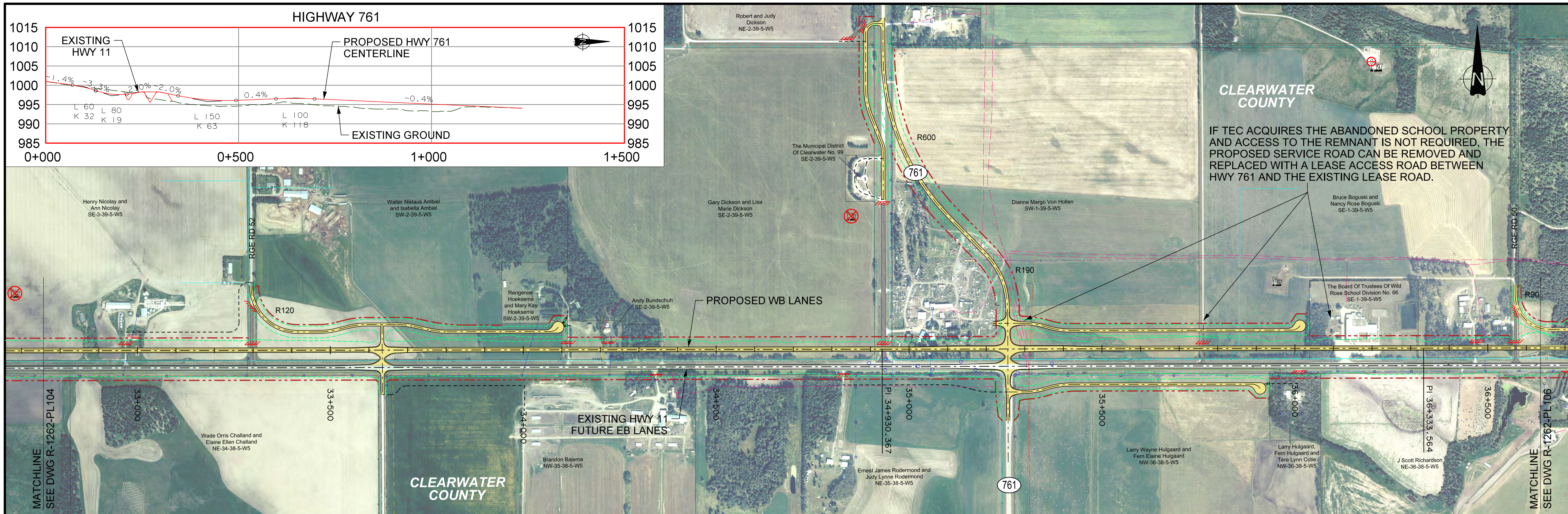
<p>CONSULTANT</p> <p>PROJECT NO. E00782A</p>	<p>LEGEND</p> <ul style="list-style-type: none"> ROADWAY CENTERLINE POTENTIAL RW LIMIT CUT/FILL LIMIT RGE RD XX MINOR RANGE ROAD MAJOR RANGE ROAD ACCESS/INTERSECTION CLOSURE NEW / EXISTING BRIDGE CULVERT NEW / EXISTING BRIDGE TENTATIVE DRIVEWAY CENTERLINE TENTATIVE LEASE ACCESS ROAD CENTRELINE COUNTY BOUNDARY AERIAL CABLE COMMUNICATION POLE GAS CO-OP PIPELINE GAS PIPELINE LVP/HVP PIPELINE TRANSFORMER LINE TRANSMISSION LINE OVERHEAD POWER LINE OIL PIPELINE POWER LINE POWER POLE TELUS TRENCH MAJOR UTILITY CROSSING/ POTENTIAL CONFLICT STREET LIGHT TRANSMISSION TOWER WELLHEAD (ACTIVE) WELLHEAD (SUSPENDED) WELLHEAD (ABANDONED) <p>NOTE: The final frontage road, access road and driveway alignments and requirements will likely change in many locations during detail design and the right-of-way acquisition process.</p>	<p>0 5 10 25 m</p> <p>VERTICAL SCALE 1:500</p> <p>0 75 150 250 m</p> <p>HORIZONTAL SCALE 1:5000</p>	<p>HIGHWAY 11 PLAN AND PROFILE</p> <p>HIGHWAY 11 TWINNING, FUNCTIONAL PLANNING STUDY</p> <p>PROJECT B: HWY 22 TO TWP RD 390</p>				<p>PLAN R-1262-PL102</p>
			<p>REGION CENTRAL</p>	<p>HIGHWAY HWY 11:10</p>	<p>DATE 04/26/2024</p>	<p>SHEET 2 OF 11</p>	



CONSULTANT 	LEGEND --- ROADWAY CENTERLINE - - - POTENTIAL RW LIMIT - - - CUT/FILL LIMIT RGE RD XX MINOR RANGE ROAD RGE RD XX MAJOR RANGE ROAD ACCESS/INTERSECTION CLOSURE NEW / EXISTING BRIDGE CULVERT NEW / EXISTING BRIDGE - - - TENTATIVE DRIVEWAY CENTERLINE - - - TENTATIVE LEASE ACCESS ROAD CENTRELINE - - - COUNTY BOUNDARY AERIAL CABLE COMMUNICATION POLE GAS CO-OP PIPELINE GAS PIPELINE LVP/HVP PIPELINE TRANSFORMER LINE TRANSMISSION LINE OVERHEAD POWER LINE OIL PIPELINE POWER LINE POWER POLE TELUS TRENCH MAJOR UTILITY CROSSING/ POTENTIAL CONFLICT STREET LIGHT TRANSMISSION TOWER WELLHEAD (ACTIVE) WELLHEAD (SUSPENDED) WELLHEAD (ABANDONED)	HIGHWAY 11 PLAN AND PROFILE HIGHWAY 11 TWINNING, FUNCTIONAL PLANNING STUDY PROJECT B: HWY 22 TO TWP RD 390		
		PROJECT NO. E00782A NOTE: The final frontage road, access road and driveway alignments and requirements will likely change in many locations during detail design and the right-of-way acquisition process.	0 5 10 25 m VERTICAL SCALE 1:500 0 75 150 250 m HORIZONTAL SCALE 1:5000	

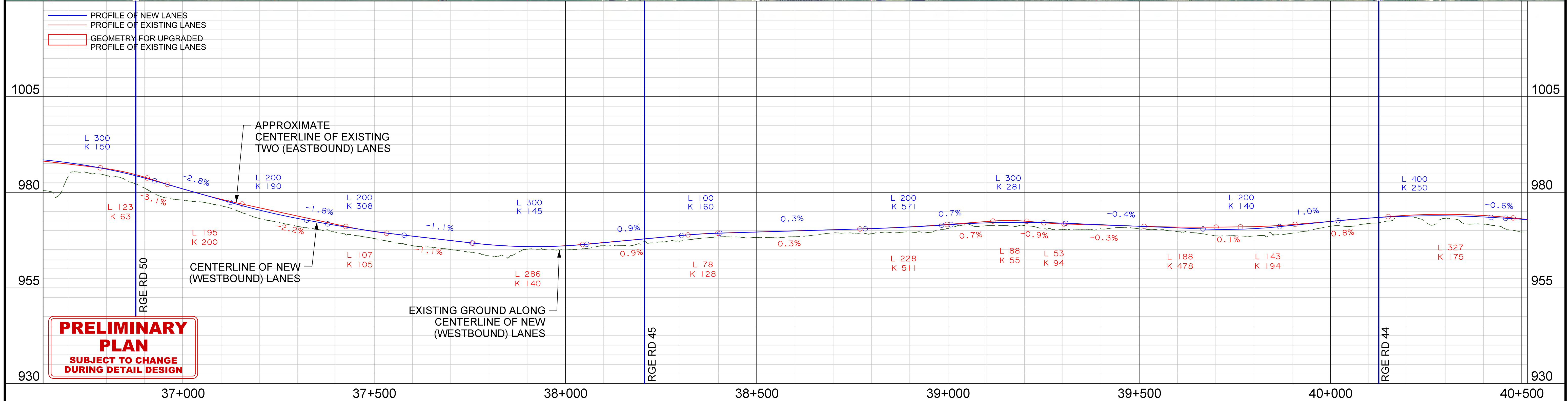
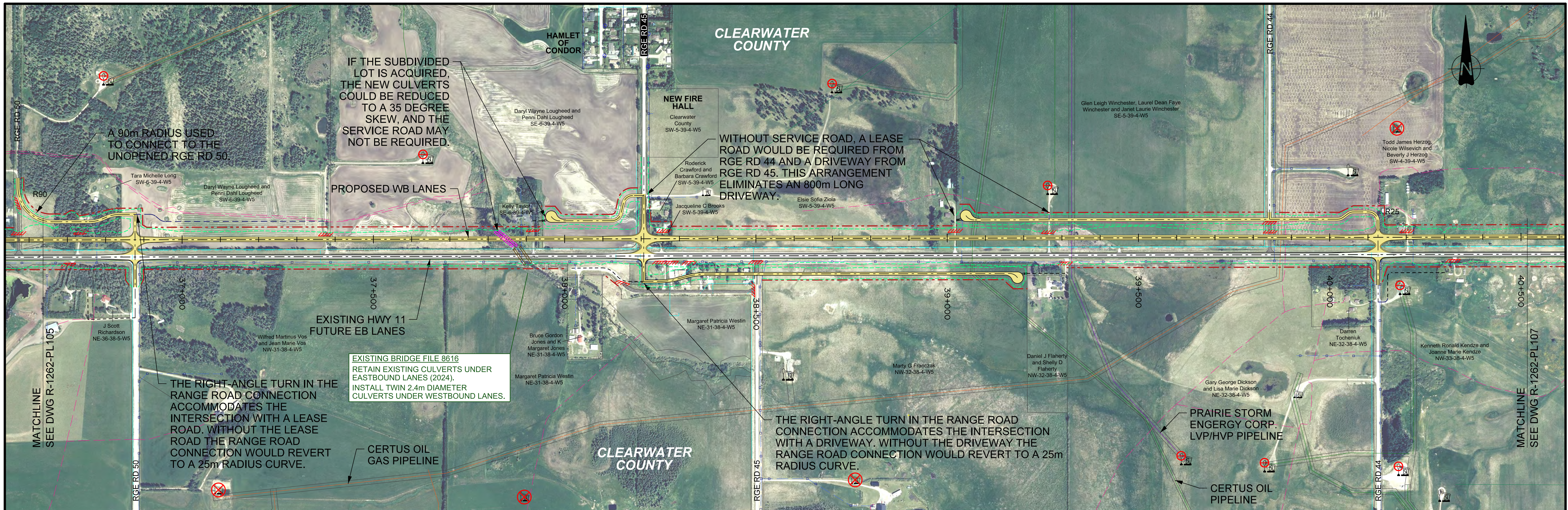


CONSULTANT 	LEGEND ROADWAY CENTERLINE POTENTIAL RW LIMIT CUT/FILL LIMIT RGE RD XX MINOR RANGE ROAD MAJOR RANGE ROAD ACCESS/INTERSECTION CLOSURE NEW / EXISTING BRIDGE CULVERT NEW / EXISTING BRIDGE TENTATIVE DRIVEWAY CENTERLINE TENTATIVE LEASE ACCESS ROAD CENTRELINE COUNTY BOUNDARY AERIAL CABLE COMMUNICATION POLE GAS CO-OP PIPELINE GAS PIPELINE LVP/HVP PIPELINE TRANSFORMER LINE TRANSMISSION LINE OVERHEAD POWER LINE OIL PIPELINE POWER LINE POWER POLE TELUS TRENCH MAJOR UTILITY CROSSING/ POTENTIAL CONFLICT STREET LIGHT TRANSMISSION TOWER WELLHEAD (ACTIVE) WELLHEAD (SUSPENDED) WELLHEAD (ABANDONED)	HIGHWAY 11 PLAN AND PROFILE HIGHWAY 11 TWINNING, FUNCTIONAL PLANNING STUDY PROJECT B: HWY 22 TO TWP RD 390		
		PROJECT NO. E00782A NOTE: The final frontage road, access road and driveway alignments and requirements will likely change in many locations during detail design and the right-of-way acquisition process.	0 5 10 25 m VERTICAL SCALE 1:500 0 75 150 250 m HORIZONTAL SCALE 1:5000	

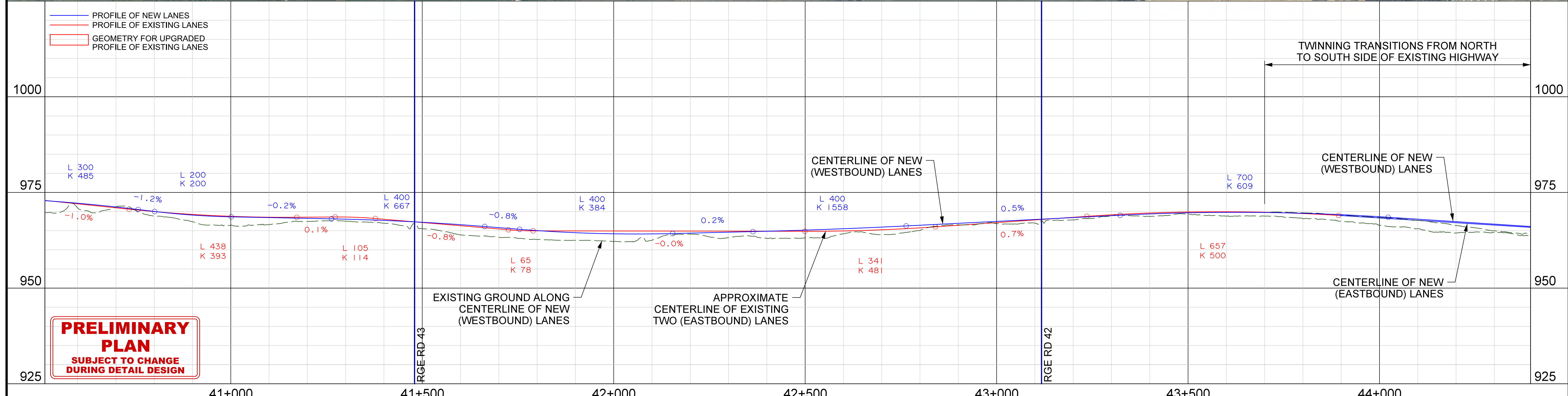
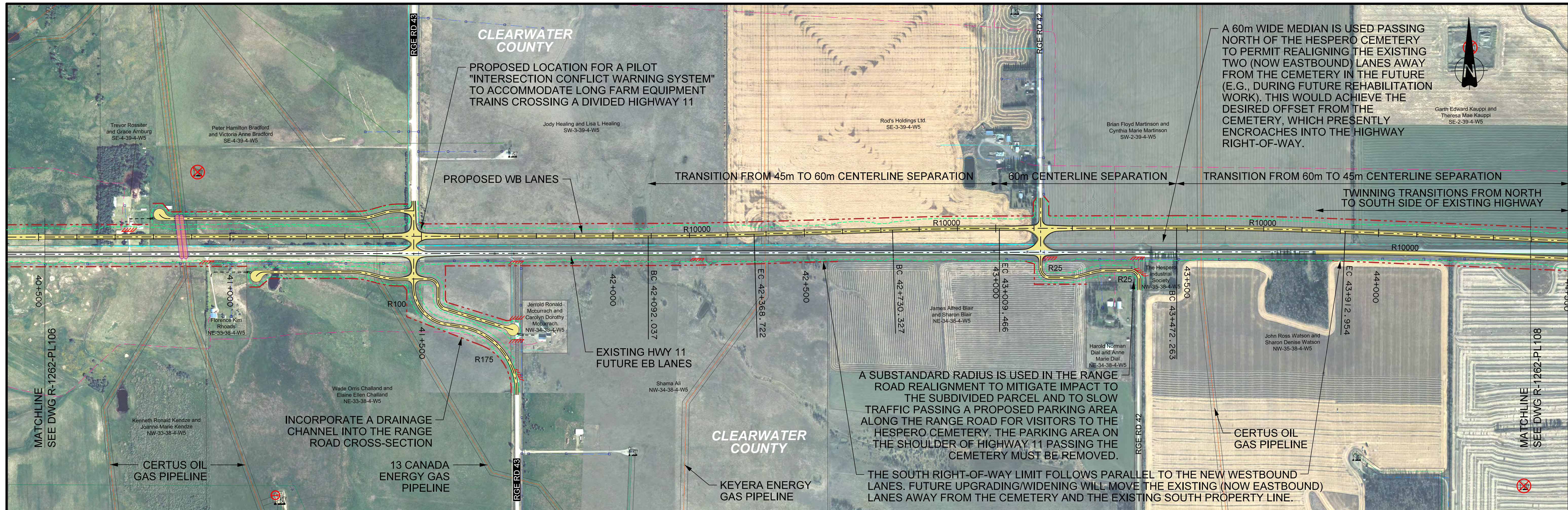


PRELIMINARY
PLAN
 SUBJECT TO CHANGE
 DURING DETAIL DESIGN

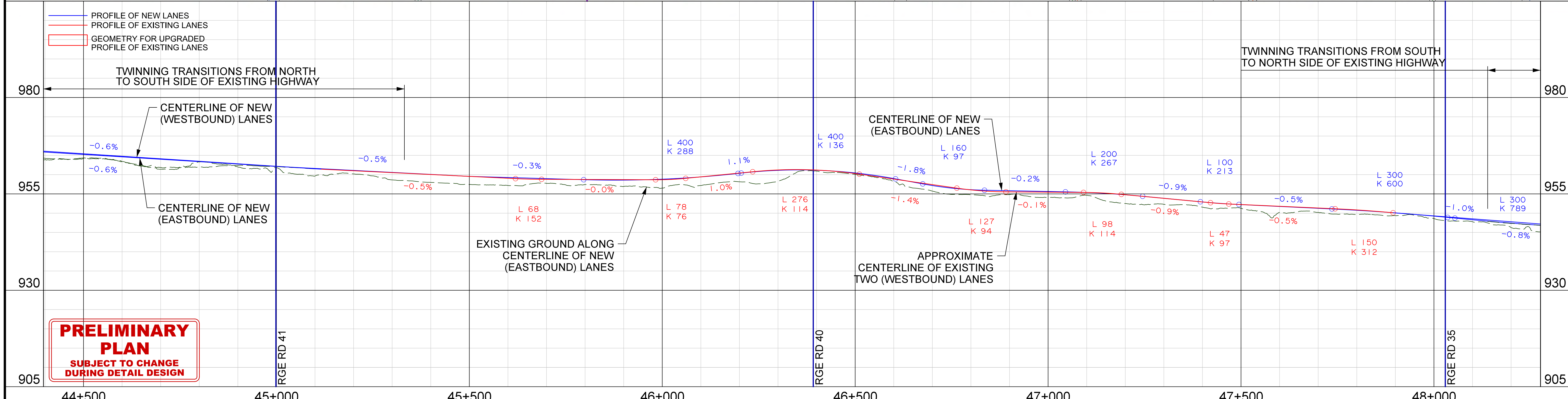
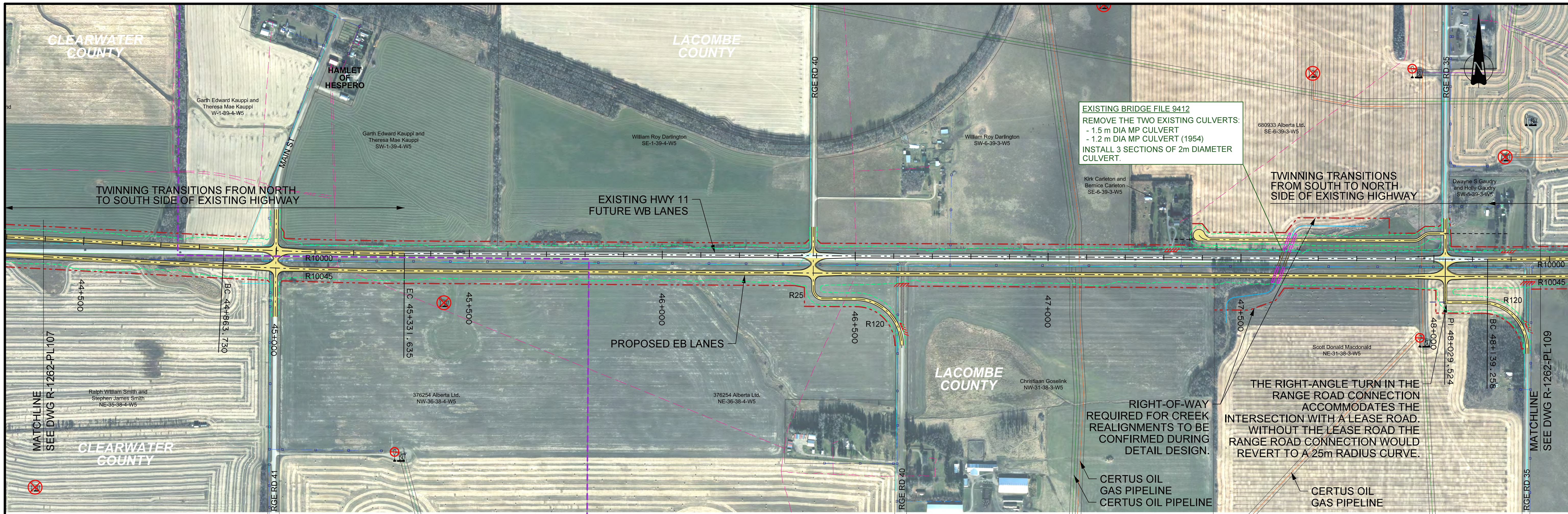
	LEGEND --- ROADWAY CENTERLINE - - - POTENTIAL RW LIMIT - - - CUT/FILL LIMIT RGE RD XX MINOR RANGE ROAD MAJOR RANGE ROAD ACCESS/INTERSECTION CLOSURE	NEW / EXISTING BRIDGE CULVERT NEW / EXISTING BRIDGE TENTATIVE DRIVEWAY CENTERLINE TENTATIVE LEASE ACCESS ROAD CENTRELINE COUNTY BOUNDARY	AERIAL CABLE COMMUNICATION POLE GAS CO-OP PIPELINE GAS PIPELINE LVP/HVP PIPELINE TRANSFORMER LINE TRANSMISSION LINE	OVERHEAD POWER LINE OIL PIPELINE POWER LINE POWER POLE TELUS TRENCH MAJOR UTILITY CROSSING/ POTENTIAL CONFLICT	STREET LIGHT TRANSMISSION TOWER WELLHEAD (ACTIVE) WELLHEAD (SUSPENDED) WELLHEAD (ABANDONED)	0 5 10 25 m VERTICAL SCALE 1:500 0 75 150 250 m HORIZONTAL SCALE 1:5000	HIGHWAY 11 PLAN AND PROFILE HIGHWAY 11 TWINNING, FUNCTIONAL PLANNING STUDY PROJECT B: HWY 22 TO TWP RD 390	
	CONSULTANT PROJECT NO. E00782A	NOTE: The final frontage road, access road and driveway alignments and requirements will likely change in many locations during detail design and the right-of-way acquisition process.				REGION CENTRAL HIGHWAY HWY 11:10 DATE 02/22/2024 SHEET 5 OF 11	PLAN R-1262-PL105	



CONSULTANT 	LEGEND ROADWAY CENTERLINE POTENTIAL RW LIMIT CUT/FILL LIMIT RGE RD XX MINOR RANGE ROAD RGE RD XX MAJOR RANGE ROAD ACCESS/INTERSECTION CLOSURE	NEW / EXISTING BRIDGE CULVERT NEW / EXISTING BRIDGE TENTATIVE DRIVEWAY CENTERLINE TENTATIVE LEASE ACCESS ROAD CENTRELINE COUNTY BOUNDARY	AERIAL CABLE COMMUNICATION POLE GAS CO-OP PIPELINE GAS PIPELINE LVP/HVP PIPELINE TRANSFORMER LINE TRANSMISSION LINE	OVERHEAD POWER LINE OIL PIPELINE POWER LINE POWER POLE TELUS TRENCH MAJOR UTILITY CROSSING/ POTENTIAL CONFLICT	STREET LIGHT TRANSMISSION TOWER WELLHEAD (ACTIVE) WELLHEAD (SUSPENDED) WELLHEAD (ABANDONED)	0 5 10 25 m VERTICAL SCALE 1:500 0 75 150 250 m HORIZONTAL SCALE 1:5000	HIGHWAY 11 PLAN AND PROFILE HIGHWAY 11 TWINNING, FUNCTIONAL PLANNING STUDY PROJECT B: HWY 22 TO TWP RD 390		

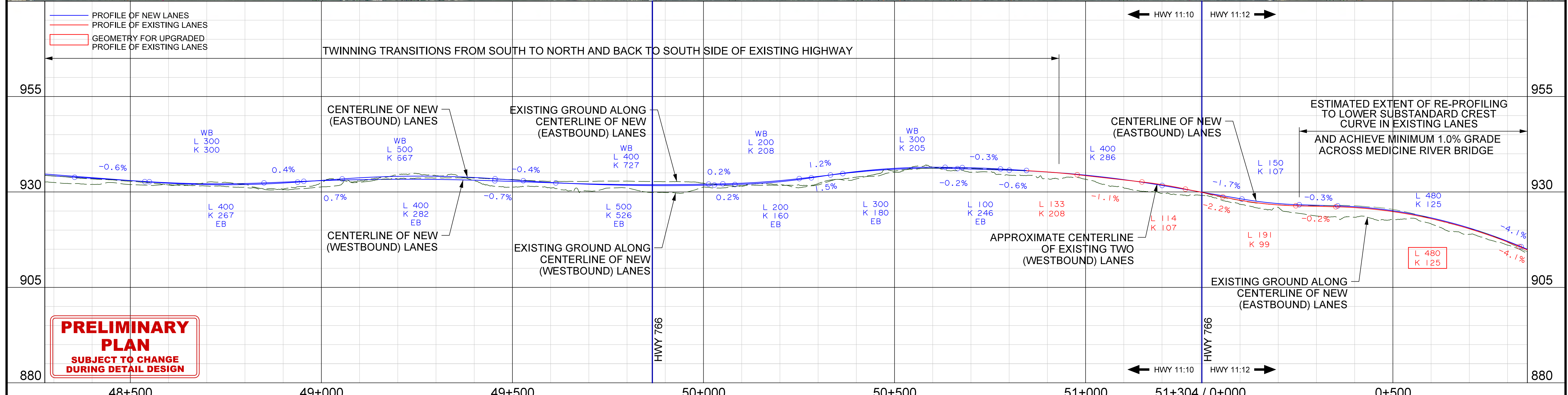
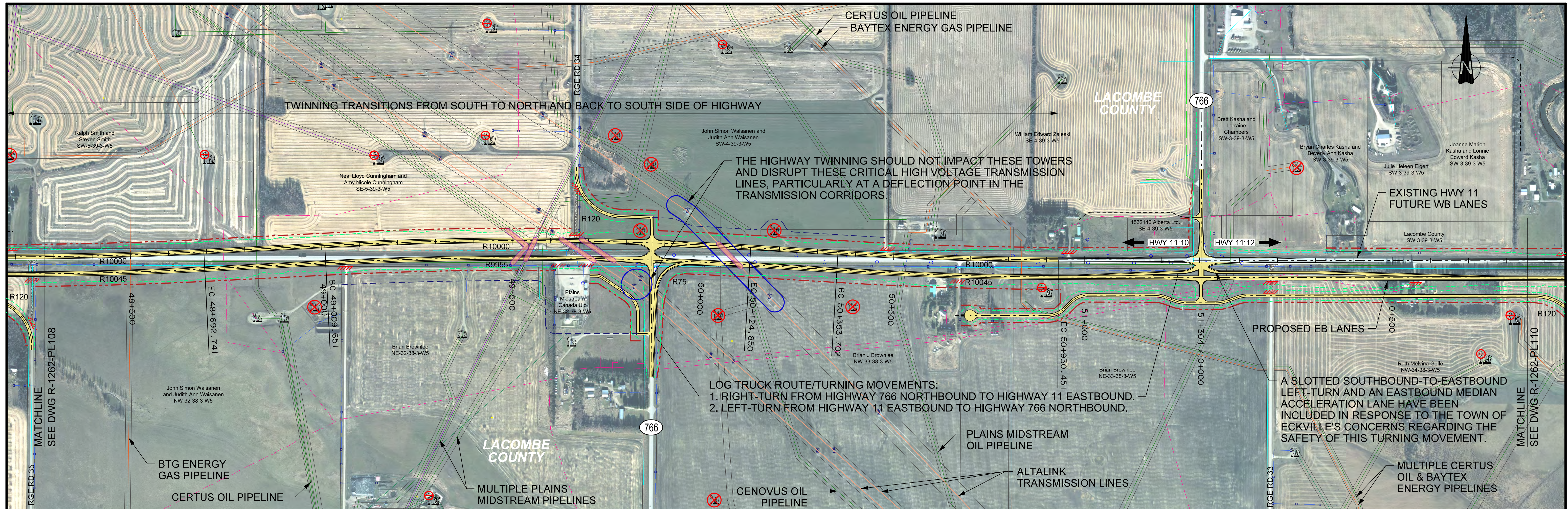


CONSULTANT 	LEGEND ROADWAY CENTERLINE POTENTIAL RW LIMIT CUT/FILL LIMIT RGE RD XX MINOR RANGE ROAD MAJOR RANGE ROAD ACCESS/INTERSECTION CLOSURE NOTE: The final frontage road, access road and driveway alignments and requirements will likely change in many locations during detail design and the right-of-way acquisition process.	NEW / EXISTING BRIDGE CULVERT NEW / EXISTING BRIDGE TENTATIVE DRIVEWAY CENTERLINE TENTATIVE LEASE ACCESS ROAD CENTRELINE COUNTY BOUNDARY	AERIAL CABLE COMMUNICATION POLE GAS CO-OP PIPELINE GAS PIPELINE LVP/HVP PIPELINE TRANSFORMER LINE TRANSMISSION LINE	OVERHEAD POWER LINE OIL PIPELINE POWER LINE POWER POLE TELUS TRENCH MAJOR UTILITY CROSSING/ POTENTIAL CONFLICT	STREET LIGHT TRANSMISSION TOWER WELLHEAD (ACTIVE) WELLHEAD (SUSPENDED) WELLHEAD (ABANDONED)	0 5 10 25 m VERTICAL SCALE 1:500 0 75 150 250 m HORIZONTAL SCALE 1:5000	HIGHWAY 11 PLAN AND PROFILE HIGHWAY 11 TWINNING, FUNCTIONAL PLANNING STUDY PROJECT B: HWY 22 TO TWP RD 390	
		REGION CENTRAL HIGHWAY HWY 11:10 DATE 01/18/2024 SHEET 7 OF 11 PLAN R-1262-PL107						

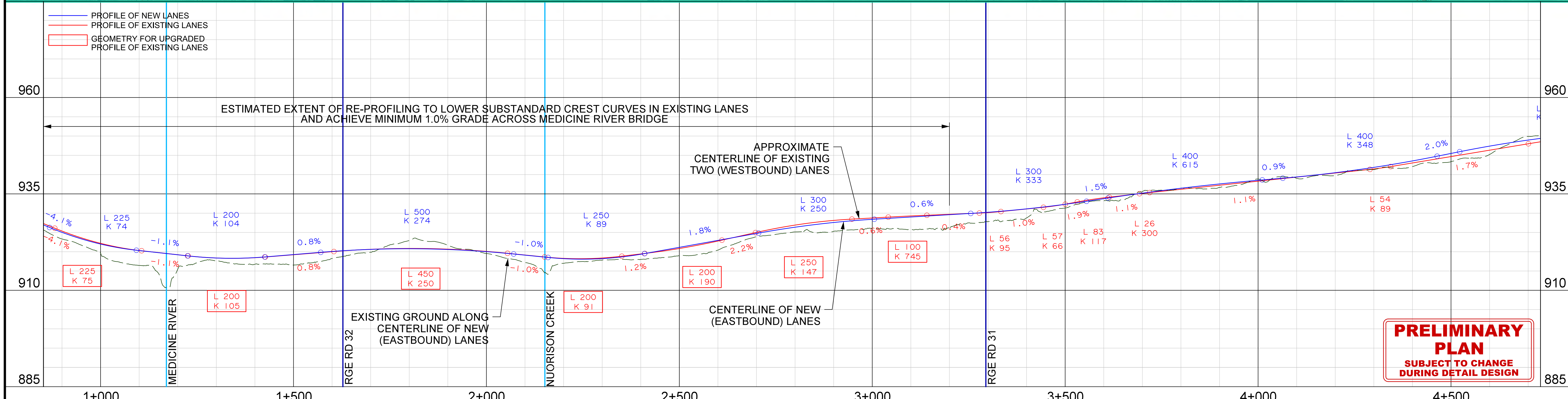
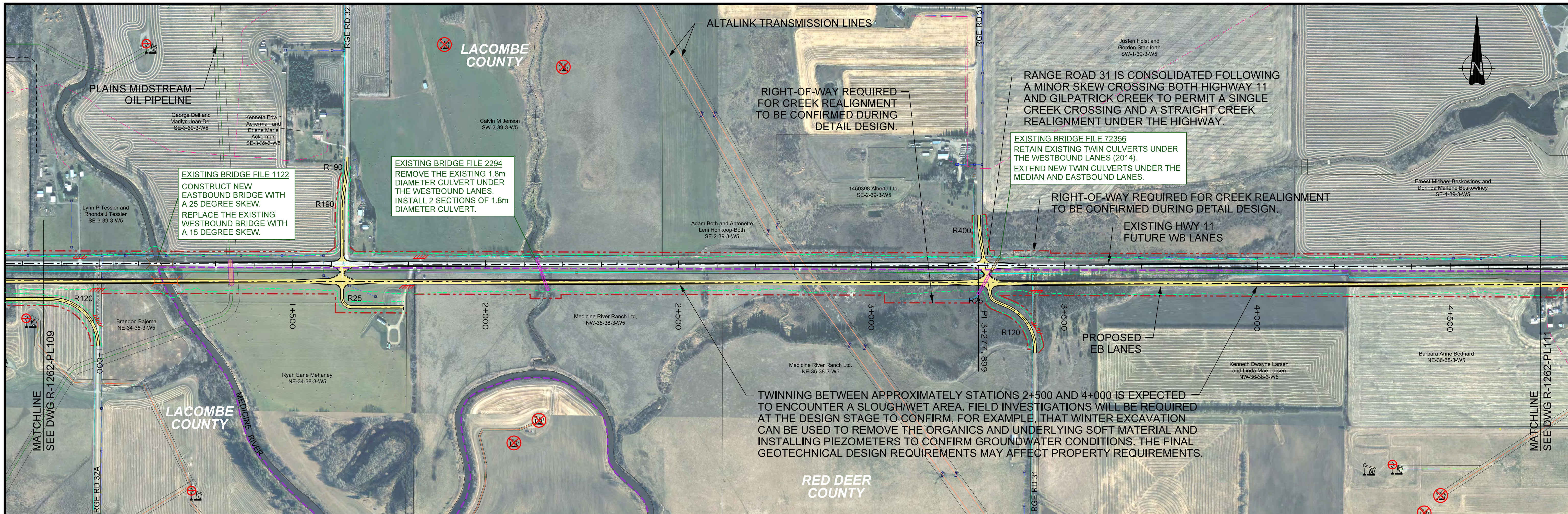


PRELIMINARY
SUBJECT TO CHANGE
DURING DETAIL DESIGN

CONSULTANT 	LEGEND ROADWAY CENTERLINE POTENTIAL RW LIMIT CUT/FILL LIMIT RGE RD XX MINOR RANGE ROAD MAJOR RANGE ROAD ACCESS/INTERSECTION CLOSURE NOTE: The final frontage road, access road and driveway alignments and requirements will likely change in many locations during detail design and the right-of-way acquisition process.	NEW / EXISTING BRIDGE CULVERT NEW / EXISTING BRIDGE TENTATIVE DRIVEWAY CENTERLINE TENTATIVE LEASE ACCESS ROAD CENTRELINE COUNTY BOUNDARY	AERIAL CABLE COMMUNICATION POLE GAS CO-OP PIPELINE GAS PIPELINE LVP/HVP PIPELINE TRANSFORMER LINE TRANSMISSION LINE	OVERHEAD POWER LINE OIL PIPELINE POWER LINE POWER POLE TELUS TRENCH MAJOR UTILITY CROSSING/ POTENTIAL CONFLICT	STREET LIGHT TRANSMISSION TOWER WELLHEAD (ACTIVE) WELLHEAD (SUSPENDED) WELLHEAD (ABANDONED)	0 5 10 25 m VERTICAL SCALE 1:500 0 75 150 250 m HORIZONTAL SCALE 1:5000	HIGHWAY 11 PLAN AND PROFILE HIGHWAY 11 TWINNING, FUNCTIONAL PLANNING STUDY PROJECT B: HWY 22 TO TWP RD 390	
		REGION CENTRAL HIGHWAY HWY 11:10 DATE 04/26/2024 SHEET 8 OF 11 PLAN R-1262-PL108						

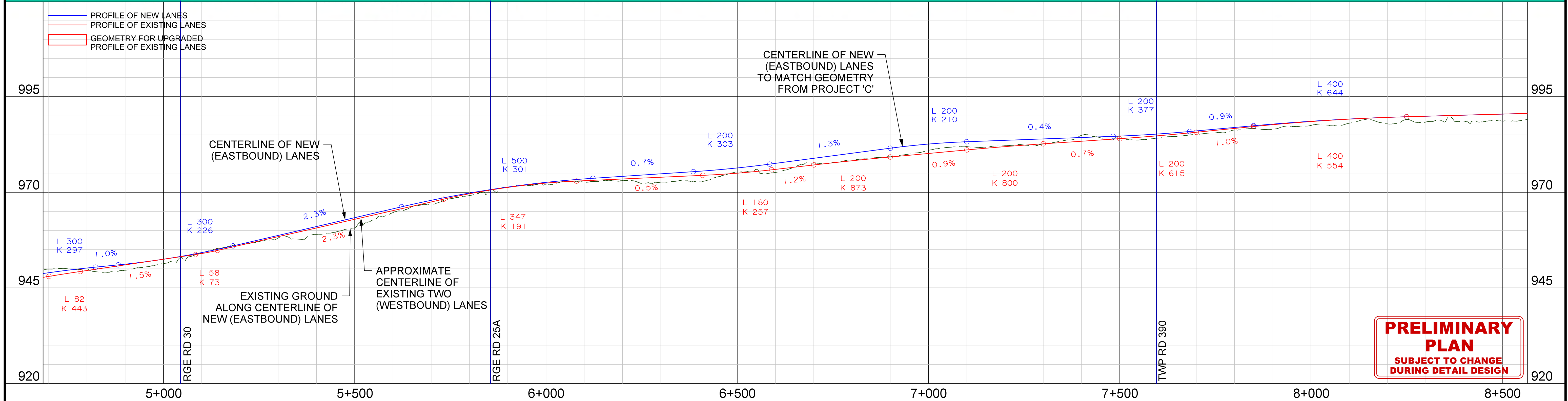
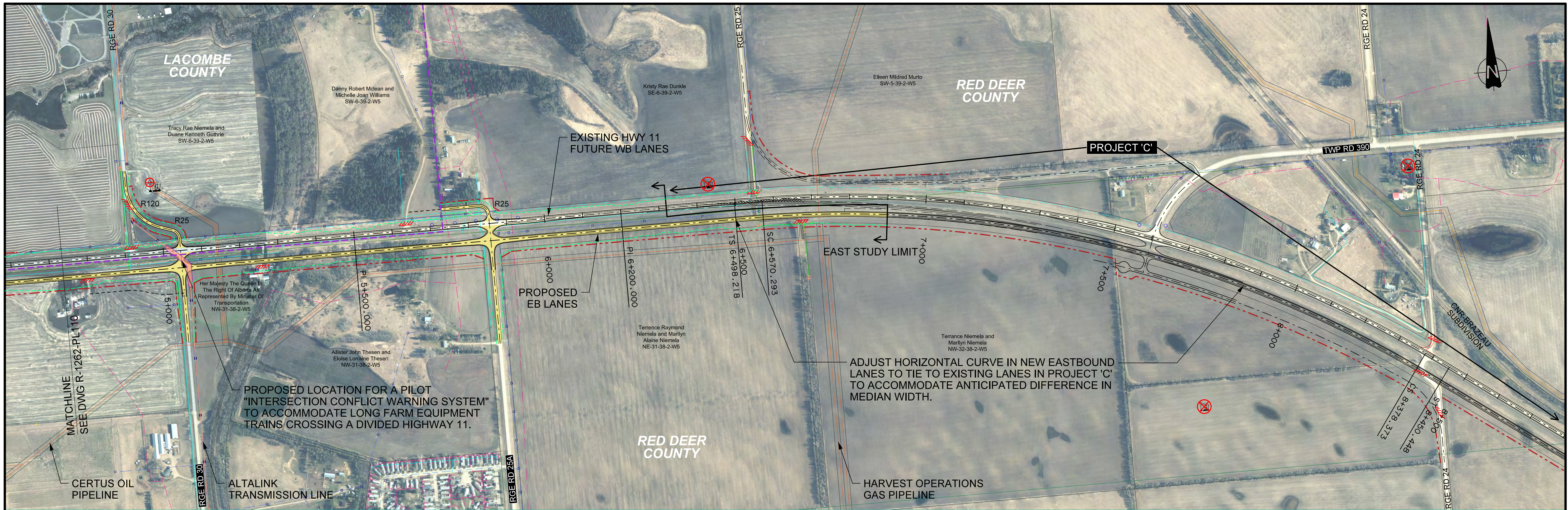


CONSULTANT 	LEGEND ROADWAY CENTERLINE POTENTIAL RW LIMIT CUT/FILL LIMIT RGE RD XX MINOR RANGE ROAD MAJOR RANGE ROAD ACCESS/INTERSECTION CLOSURE NEW / EXISTING BRIDGE CULVERT NEW / EXISTING BRIDGE TENTATIVE DRIVEWAY CENTERLINE TENTATIVE LEASE ACCESS ROAD CENTRELINE COUNTY BOUNDARY AERIAL CABLE COMMUNICATION POLE GAS CO-OP PIPELINE GAS PIPELINE LVP/HVP PIPELINE TRANSFORMER LINE TRANSMISSION LINE OVERHEAD POWER LINE OIL PIPELINE POWER LINE POWER POLE TELUS TRENCH MAJOR UTILITY CROSSING/POTENTIAL CONFLICT STREET LIGHT TRANSMISSION TOWER WELLHEAD (ACTIVE) WELLHEAD (SUSPENDED) WELLHEAD (ABANDONED)	HIGHWAY 11 PLAN AND PROFILE HIGHWAY 11 TWINNING, FUNCTIONAL PLANNING STUDY PROJECT B: HWY 22 TO TWP RD 390		
		PROJECT NO. E00782A NOTE: The final frontage road, access road and driveway alignments and requirements will likely change in many locations during detail design and the right-of-way acquisition process.	REGION CENTRAL HIGHWAY HWY 11:10 / HWY 11:12 DATE 01/18/2024 SHEET 9 OF 11 PLAN R-1262-PL109	



PRELIMINARY PLAN
SUBJECT TO CHANGE DURING DETAIL DESIGN

CONSULTANT 	LEGEND ROADWAY CENTERLINE POTENTIAL RW LIMIT CUT/FILL LIMIT RGE RD XX MINOR RANGE ROAD MAJOR RANGE ROAD ACCESS/INTERSECTION CLOSURE NEW / EXISTING BRIDGE CULVERT NEW / EXISTING BRIDGE TENTATIVE DRIVEWAY CENTERLINE TENTATIVE LEASE ACCESS ROAD CENTRELINE COUNTY BOUNDARY AERIAL CABLE COMMUNICATION POLE GAS CO-OP PIPELINE GAS PIPELINE LVP/HVP PIPELINE TRANSFORMER LINE TRANSMISSION LINE OVERHEAD POWER LINE OIL PIPELINE POWER LINE POWER POLE TELUS TRENCH MAJOR UTILITY CROSSING/ POTENTIAL CONFLICT STREET LIGHT TRANSMISSION TOWER WELLHEAD (ACTIVE) WELLHEAD (SUSPENDED) WELLHEAD (ABANDONED)	HIGHWAY 11 PLAN AND PROFILE HIGHWAY 11 TWINNING, FUNCTIONAL PLANNING STUDY PROJECT B: HWY 22 TO TWP RD 390		
		PROJECT NO. E00782A NOTE: The final frontage road, access road and driveway alignments and requirements will likely change in many locations during detail design and the right-of-way acquisition process.	0 5 10 25 m 0 75 150 250 m VERTICAL SCALE 1:500 HORIZONTAL SCALE 1:5000	



PRELIMINARY PLAN
SUBJECT TO CHANGE DURING DETAIL DESIGN

<p>CONSULTANT</p> <p>PROJECT NO. E00782A</p>	<p>LEGEND</p> <ul style="list-style-type: none"> ROADWAY CENTERLINE POTENTIAL RW LIMIT CUT/FILL LIMIT RGE RD XX MINOR RANGE ROAD MAJOR RANGE ROAD ACCESS/INTERSECTION CLOSURE NEW / EXISTING BRIDGE CULVERT NEW / EXISTING BRIDGE TENTATIVE DRIVEWAY CENTERLINE TENTATIVE LEASE ACCESS ROAD CENTRELINE COUNTY BOUNDARY AERIAL CABLE COMMUNICATION POLE GAS CO-OP PIPELINE GAS PIPELINE LVP/HVP PIPELINE TRANSFORMER LINE TRANSMISSION LINE OVERHEAD POWER LINE POWER LINE POWER POLE TELUS TRENCH MAJOR UTILITY CROSSING/POTENTIAL CONFLICT STREET LIGHT TRANSMISSION TOWER WELLHEAD (ACTIVE) WELLHEAD (SUSPENDED) WELLHEAD (ABANDONED) <p>NOTE: The final frontage road, access road and driveway alignments and requirements will likely change in many locations during detail design and the right-of-way acquisition process.</p>	<p>HIGHWAY 11 PLAN AND PROFILE</p> <p>HIGHWAY 11 TWINNING, FUNCTIONAL PLANNING STUDY</p> <p>PROJECT B: HWY 22 TO TWP RD 390</p>		
		<p>0 5 10 25 m</p> <p>VERTICAL SCALE 1:500</p> <p>0 75 150 250 m</p> <p>HORIZONTAL SCALE 1:5000</p>	<p>REGION CENTRAL</p> <p>HIGHWAY HWY 11:12</p> <p>DATE 03/07/2024</p> <p>SHEET 11 OF 11</p>	