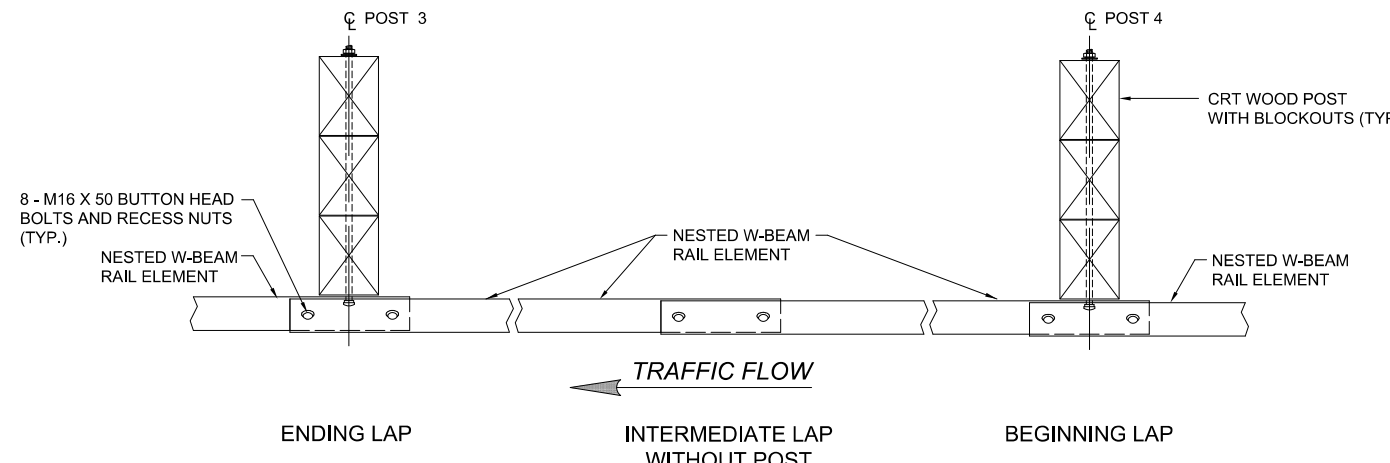


ELEVATION



NOTES:

1. 7620 RAIL LENGTHS MAY BE USED TO ELIMINATE THE INTERMEDIATE LAP WITHOUT A POST. DO NOT PLACE A LAP WITHOUT A POST UNLESS NEEDED DUE TO LENGTH OF GAP.
2. POST 1 THRU 6 ARE CRT POSTS WITH TWO BLOCKOUTS. (SEE SECTION B FOR DETAILS)
3. INSTALL THE BACK FACE OF THE NESTED GUARDRAIL A MINIMUM OF 1500 FROM THE FACE OF THE CURB-LIKE HEADWALL.
4. MAINTAIN FLAT SIDE SLOPE GRATING AT POST LOCATIONS.
5. LAP ALL RAIL SECTIONS IN THE DIRECTION OF TRAFFIC FLOW.
6. ALL FITTINGS AND HARDWARE SHALL BE GALVANIZED.
7. THIS DESIGN MEETS NCHRP REPORT 350 EVALUATION CRITERIA FOR TL-3
8. TYPICAL STRONG POST SYSTEM CAN BE WOOD, STEEL OR PLASTIC POST WITH WOOD SPACER BLOCK. REFER TO STANDARD DRAWING TEB 3.01 FOR POST DETAILS.

△			
△	NOTE 8 ADDED	HC	11 MAR 2016
No.	REVISIONS	BY	DATE

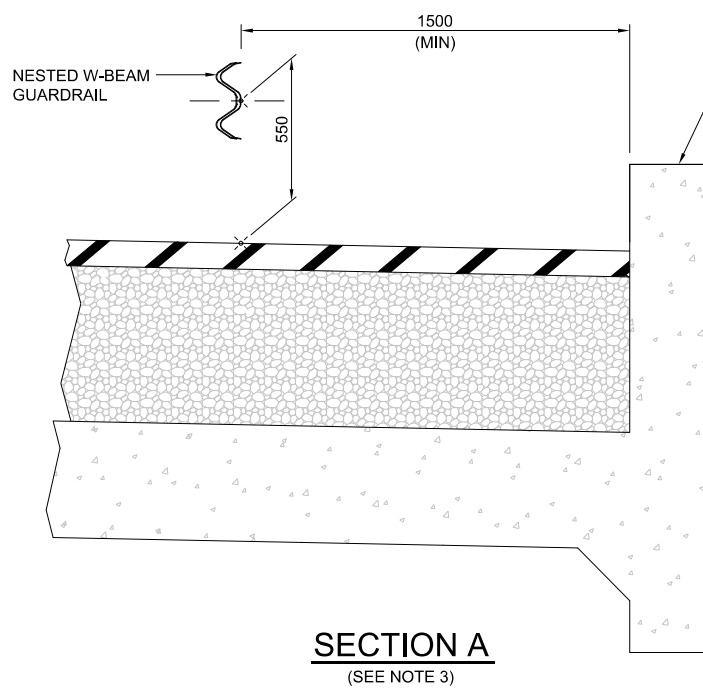
Approved:
 Allan Kwan
 Executive Director,
 Technical Standards Branch

Date: NOVEMBER, 2007

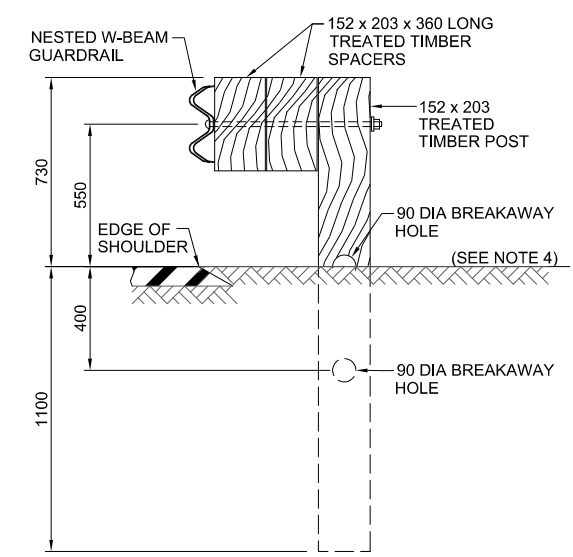


**TL-3 W-BEAM
 GUARDRAIL PLACEMENT
 AT MINOR STRUCTURES
 AND BOX CULVERTS**

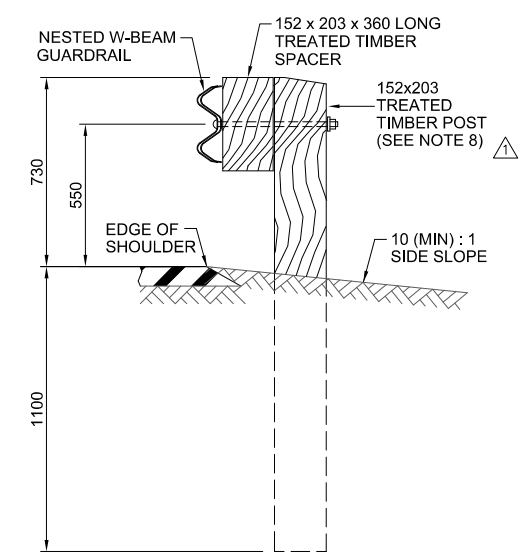
Prepared By: MO Checked By: WS Scale: N.T.S. Dwg No.: **RDG-B7.1**



SECTION A
(SEE NOTE 3)



SECTION B
CONTROLLED RELEASE TERMINAL (CRT) POST
(SEE NOTE 2)



SECTION C
STANDARD W-BEAM STRONG POST
(FOR DETAILS SEE TEB DRAWING 3.09)

ALL DIMENSIONS ARE IN MILLIMETRES UNLESS OTHERWISE INDICATED.