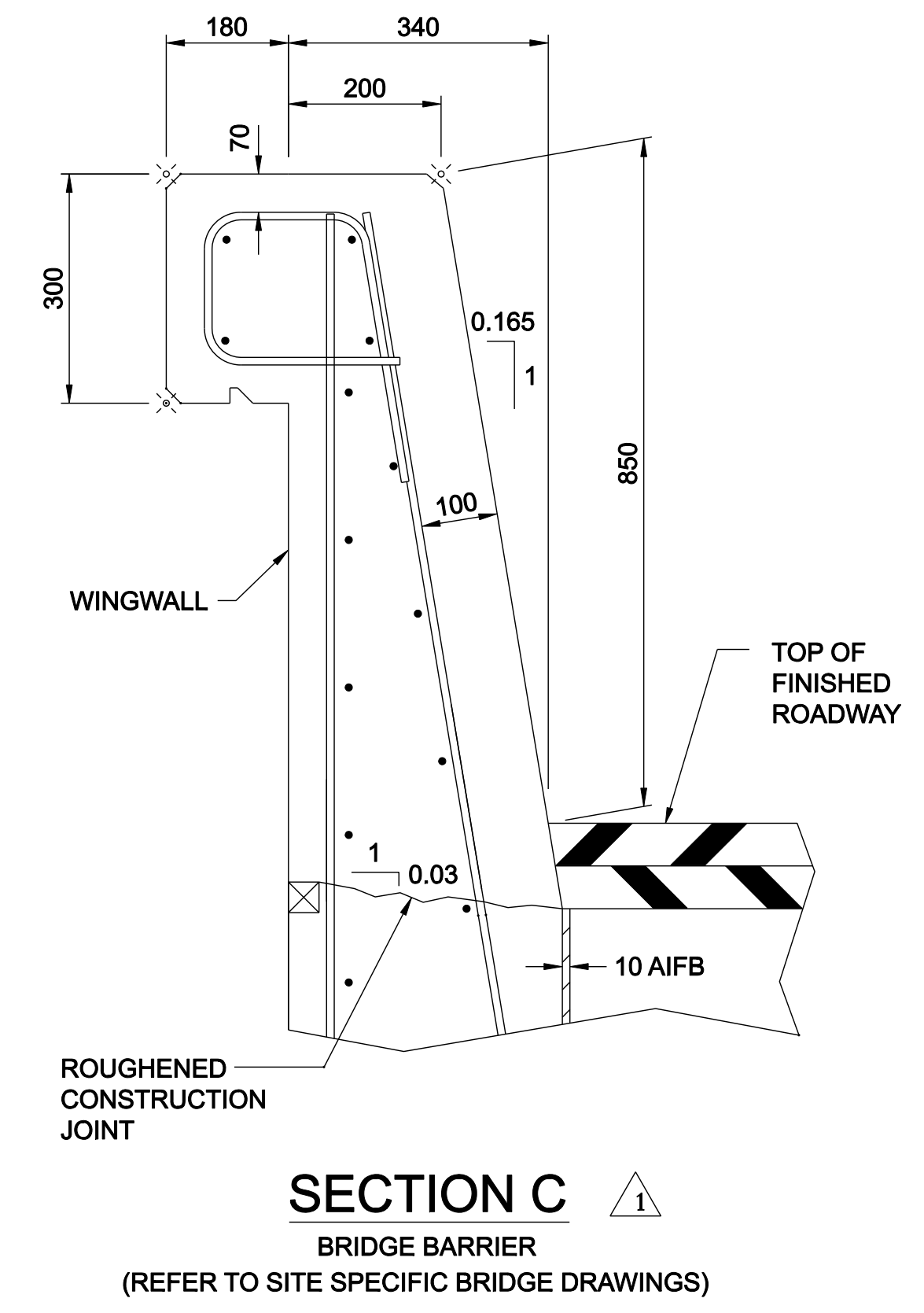
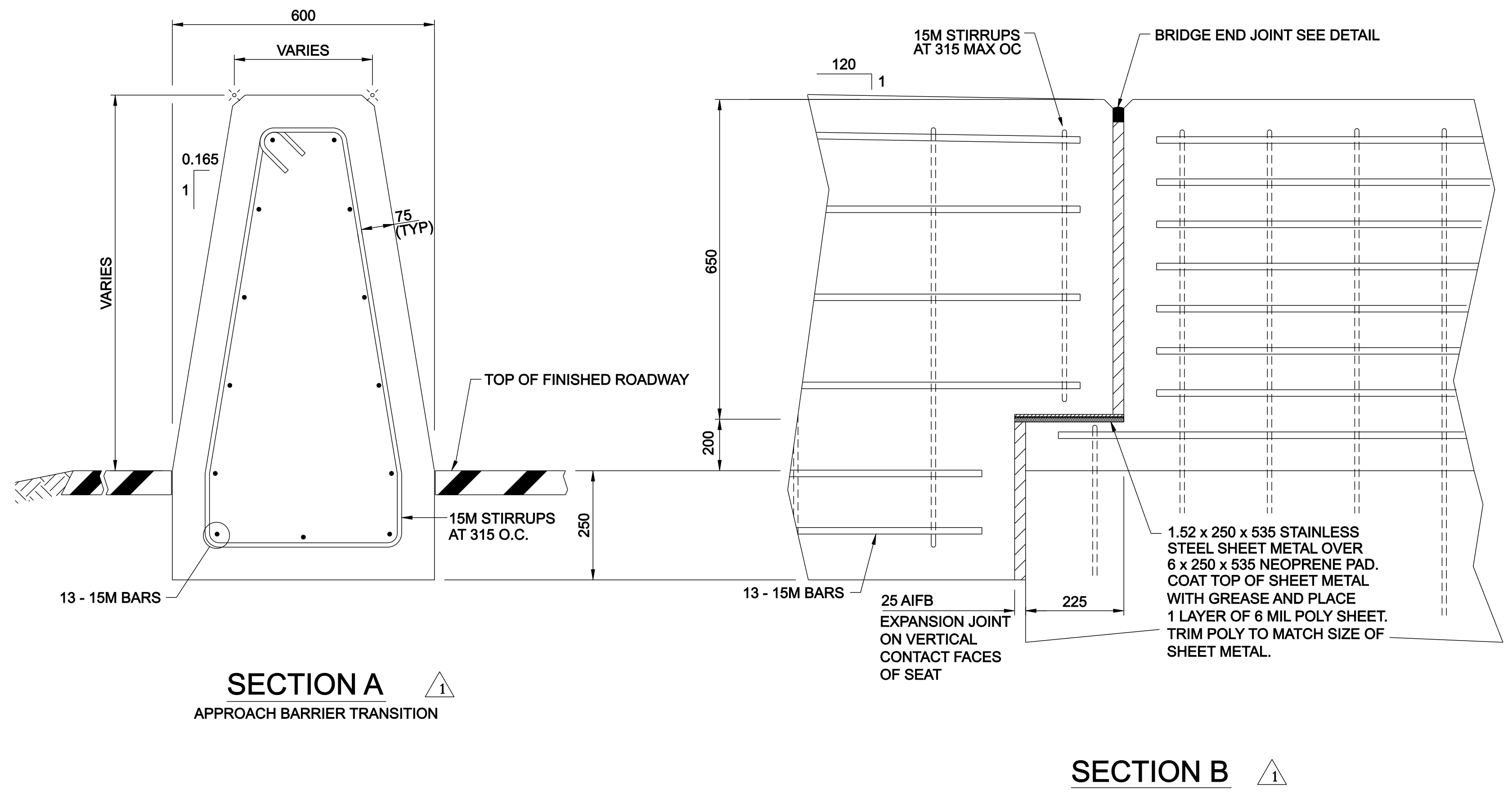
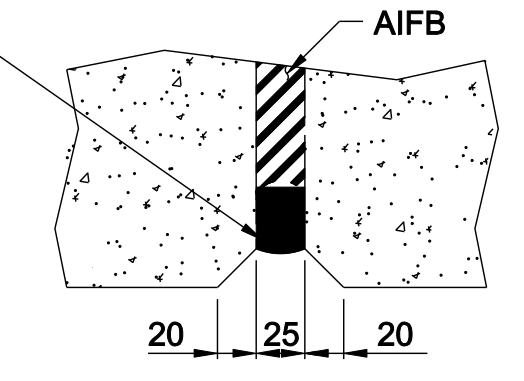


**NOTES:**

- ALL REINFORCEMENT SHALL BE IN ACCORDANCE WITH SECTION 5 OF THE SPECIFICATIONS FOR BRIDGE CONSTRUCTION.
- APPROACH BARRIER TRANSITION SHALL BE HPC CONCRETE.
- ALL CONCRETE CORNERS SHALL HAVE A 20 CHAMFER OR FILLET UNLESS NOTED OTHERWISE.
- ALL REINFORCING STEEL SHALL HAVE 50 CLEAR COVER UNLESS NOTED OTHERWISE.
- THE DETAILS ON THIS DRAWING ARE DEVELOPED FOR USE ON BRIDGES WITH STATIONARY FIXED WINGWALLS.
- ALL DIMENSIONS ARE IN MILLIMETRES UNLESS OTHERWISE INDICATED.

PROVIDE 32 mm WIDE WABO EVAZOTE UV SEAL AS MANUFACTURED BY WATSON BOWMAN ACME OR APPROVED EQUIVALENT, ALONG TRAFFIC VERTICAL FACES AND ACROSS TOP. REFER TO SITE SPECIFIC BRIDGE DRAWINGS FOR SEAL DETAILS.



	General revisions	C.M.	15/JUL/11
No.	REVISIONS	BY	DATE
Approved:			
Allan Kwan Executive Director, Technical Standards Branch			
Date: NOVEMBER, 2007			
<b>TL-4 SINGLE SLOPE CONCRETE BARRIER TRANSITION TO PL-2 STANDARD BRIDGE CONCRETE BARRIER</b>			
Prepared By: MO	Checked By: WS	Scale: N.T.S.	Dwg No.: <b>RDG-B6.14</b>