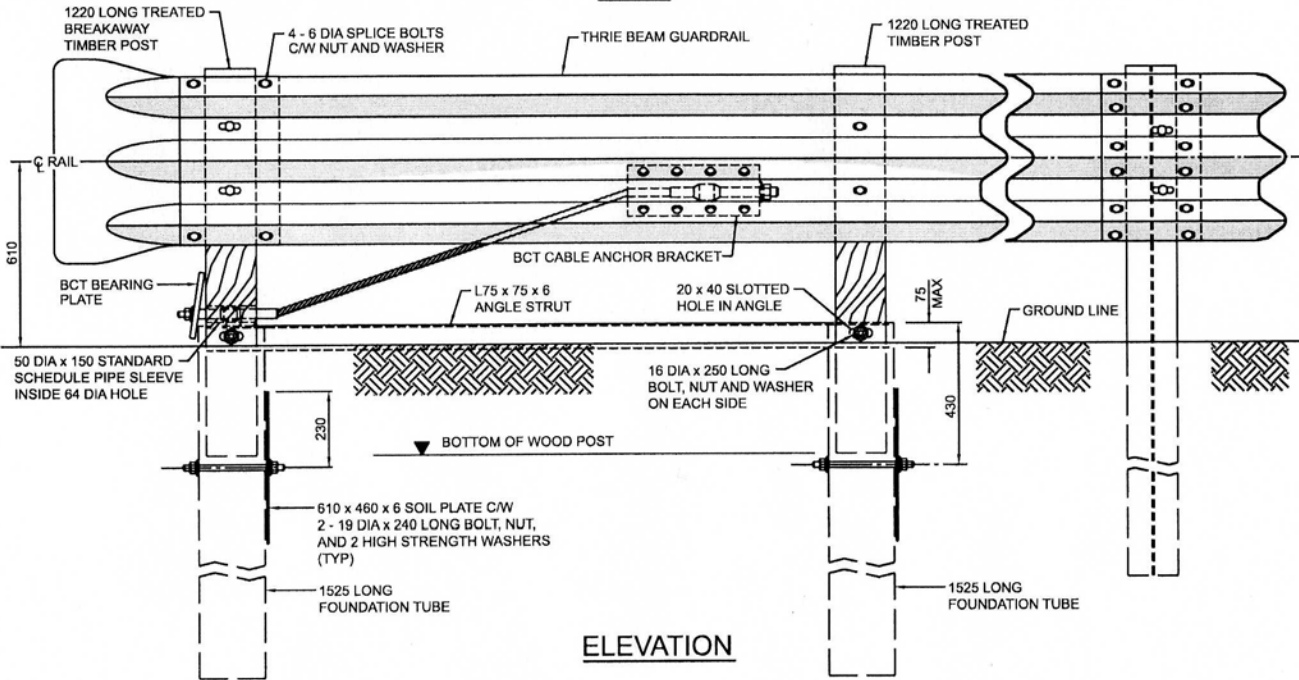


PLAN

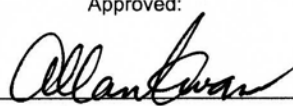



ELEVATION

NOTES:

1. THIS END TREATMENT IS ACCEPTABLE FOR USE ON THE LEAVING END OF DIVIDED ROADWAYS ONLY. USE IN MEDIAN APPLICATIONS ARE LIMITED TO INSTALLATIONS OUTSIDE THE CLEAR ZONE OF OPPOSING TRAFFIC.
2. POSTS ARE TO BE SET BY INSTRUMENT FOR ALIGNMENT AND GRADE.
3. BCT CABLE ANCHOR HARDWARE SHALL CONFORM TO AASHTO TASK FORCE 13 REPORT "A GUIDE TO STANDARDIZED HIGHWAY BARRIER HARDWARE."
4. LAP ALL GUARDRAIL SECTIONS IN THE DIRECTION OF TRAFFIC FLOW.
5. ALL REQUIRED FITTINGS AND HARDWARE SHALL BE GALVANIZED.
6. CABLE ANCHOR SHALL BE TIGHTENED DURING INSTALLATION TO TAKE OUT ANY SLACK.
7. REFER TO RDG-B5.3 AND RDG-B5.4 FOR STANDARD HARDWARE DETAILS.

ALL DIMENSIONS ARE IN MILLIMETRES UNLESS OTHERWISE INDICATED.

⚠			
⚠			
No.	REVISIONS	BY	DATE
Approved:  Executive Director, Technical Standards Branch			
Date: NOVEMBER, 2007			
MODIFIED THRIE BEAM CABLE ANCHOR TERMINAL WITH WING END (EXIT END TREATMENT FOR DIVIDED HIGHWAYS)			
Prepared By: MO	Checked By: WS	Scale: N.T.S.	Dwg No.: RDG-B5.1