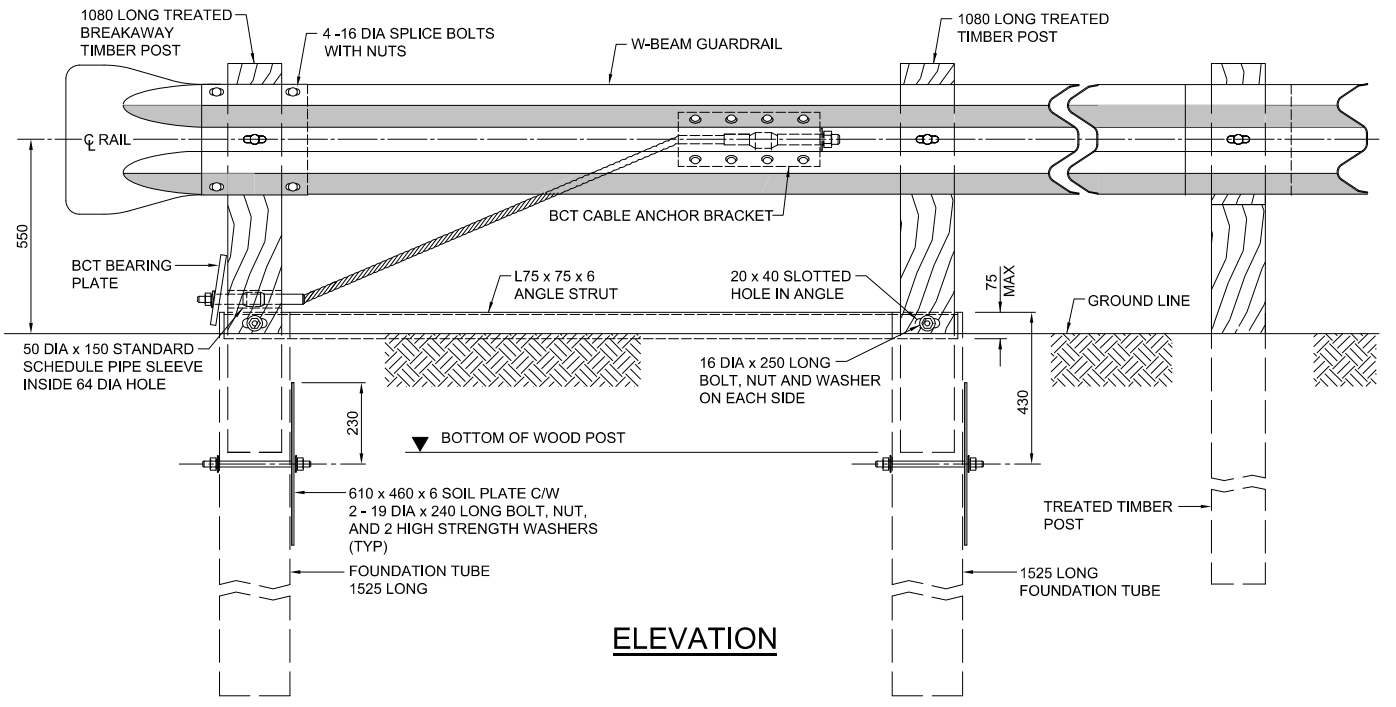


PLAN



ELEVATION

NOTES:

1. THIS END TREATMENT IS ACCEPTABLE FOR USE ON THE LEAVING END OF DIVIDED ROADWAYS ONLY. USE IN MEDIAN APPLICATIONS ARE LIMITED TO INSTALLATIONS OUTSIDE THE CLEAR ZONE OF OPPOSING TRAFFIC.
2. POSTS ARE TO BE SET BY INSTRUMENT FOR ALIGNMENT AND GRADE.
3. BCT CABLE ANCHOR HARDWARE SHALL CONFORM TO AASHTO TASK FORCE 13 REPORT "A GUIDE TO STANDARDIZED HIGHWAY BARRIER HARDWARE."
4. LAP ALL GUARDRAIL SECTIONS IN THE DIRECTION OF TRAFFIC FLOW.
5. ALL REQUIRED FITTINGS AND HARDWARE SHALL BE GALVANIZED.
6. CABLE ANCHOR SHALL BE TIGHTENED DURING INSTALLATION TO TAKE OUT ANY SLACK.
7. REFER TO RGD-B1.2 AND RDG-B1.3 FOR STANDARD HARDWARE DETAILS.

▲			
▲			
No.	REVISIONS	BY	DATE

Approved:

Moh Lali
For Executive Director,
Technical Standards Branch

Date: NOVEMBER, 2007



**W-BEAM
CABLE ANCHOR TERMINAL
(EXIT END TREATMENT
FOR DIVIDED HIGHWAYS)**

SUPERSEDED

Prepared By: MO	Checked By: WS	Scale: N.T.S.	Dwg No.: RDG-B1.1
-----------------	----------------	---------------	-------------------

ALL DIMENSIONS ARE IN MILLIMETRES UNLESS OTHERWISE INDICATED.