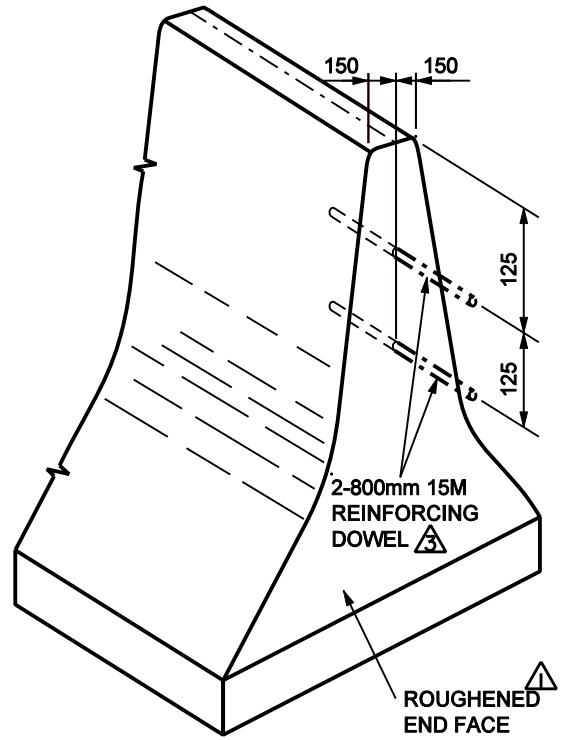
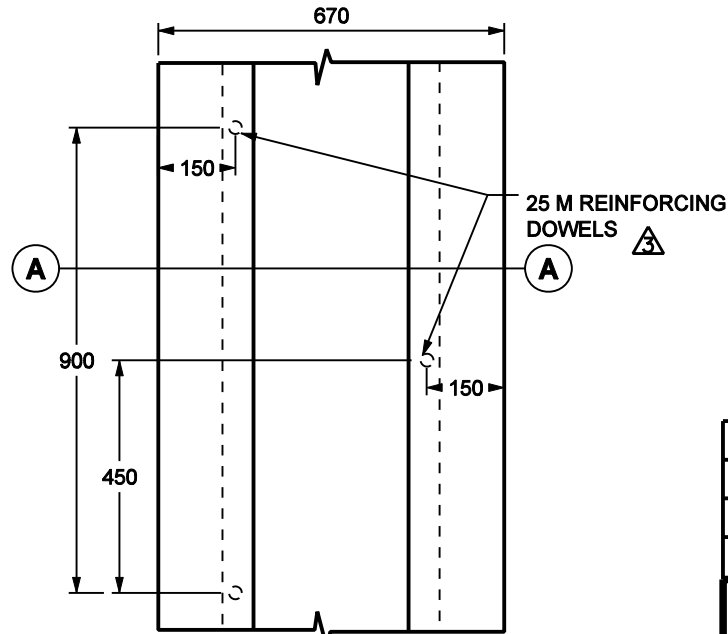


A SECTION



CONSTRUCTION JOINT DETAIL



PLAN VIEW

GENERAL NOTES

1. All concrete shall meet the requirements of the Specifications for Bridge Construction Section 4, Class C, except that slump shall be 20 ± 10mm and minimum cement content shall be 335 kg/m³.
2. All reinforcement dowels shall be epoxy coated.
3. All exposed concrete shall have a smooth surface free from imperfections.
4. Exposed surfaces shall have an approved sealer applied in accordance with manufacturer's recommendations.
5. No longitudinal reinforcement required.
6. Tooled or saw cut all around every 3m (min. 50mm deep x 3-6mm wide).
7. No joint sealer required.

△	BASE DETAILS AND NOTES	BK	08/04
△	HEIGHT DIMENSION	BK	12/03
△	TOP WIDTH AND JOINT SPACING	BK	10/03
No.	REVISIONS	BY	DATE

Approved:
Original signed by
Allan Kwan

Executive Director,
Technical Standards Branch

Date: APRIL, 1986



**SLIP-FORMED MEDIAN BARRIER
F-SHAPE**

SUPERSEDED

Prepared By: M.T	Checked By: B.K	Scale: N.T.S.	Dwg No.: CB6-4.3M3
------------------	-----------------	---------------	--------------------