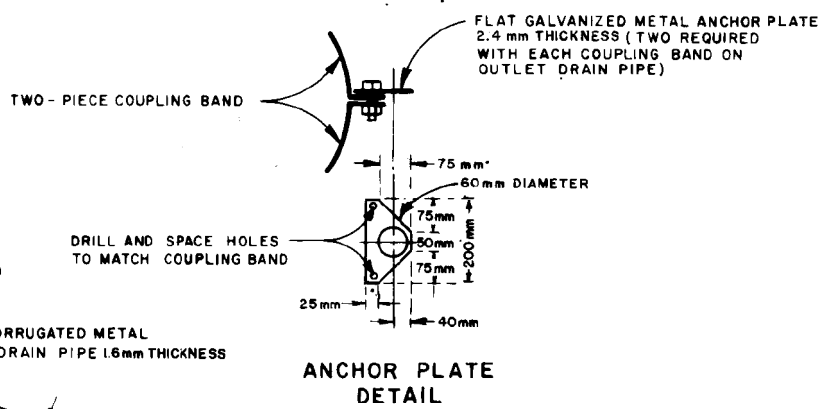


CORRUGATED METAL SPILLWAY INLET FRONT ELEVATION

- A METAL ANCHOR 40 mm STEEL PIPE OR EQUIVALENT. MIN. LENGTH 2.0 m MIN. WEIGHT 5.4 kg PER m (2 REQUIRED FOR EACH COUPLING BAND ON DOWNDRAIN PIPE)
- C TWO PIECE COUPLING BAND WITH ANCHOR PLATES.

- NOTES:**
1. ALL JOINTS TO BE ANCHORED
 2. MAXIMUM SPACING OF ANCHORS NOT TO EXCEED 9 m
 3. ALL 40 mm ANCHOR PIPE TO BE DRILLED 15 cm FROM TOP END TO RECEIVE 12 mm DIAMETER BOLT.
 4. 15 cm - 12 mm DIAMETER BOLT TO BE SUPPLIED WITH EACH ANCHOR.



ANCHOR PLATE DETAIL

RENUMBERED FROM 3.IIM10

	DW. No. CB-6
	Date 2.4 M20
Original	May, 1979
Revised	OCT/98

OBsolete
 March, 2022
 OUTLET DRAIN PIPE