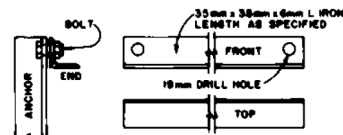


**RIP-RAP DETAIL**  
END VIEW

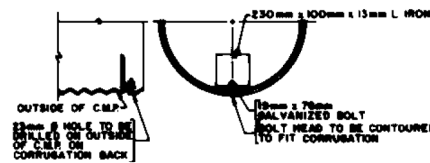
- NOTES:
1. THE METAL ANCHORS (A) ARE 35mm x 35mm x 6mm L IRON MIN. LENGTH 1.5 m
  2. SPACING OF ANCHORS DEPEND ON SLOPE AND SOIL STABILITY.
  3. MAXIMUM SPACING OF ANCHORS NOT TO EXCEED 6m. ALL JOINTS TO BE ANCHORED.
  4. ALL ANCHORS (A) TO BE DRILLED 19mm FROM TOP END TO RECEIVE 16mm DIAMETER BOLT.
  5. 40mm x 16mm DIA. BOLT TO BE SUPPLIED WITH EACH ANCHOR
  6. ALL METAL COMPONENTS TO BE GALVANIZED OR COATED WITH ZINC PRIMER.



**TYPICAL INSTALLATION**



**BRACE DETAIL**



**BAFFLE DETAIL**

	DWG. No	CB-6
		2. 4.M17
	Date	May, 1980
	Origin	
	Revised	
	Revised	

**DETAIL OF HALF-ROUND CORRUGATED STEEL PIPE DRAIN SLOPE DRAIN**

**OBSOLETE**  
March 2022