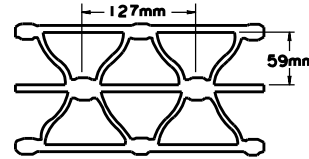
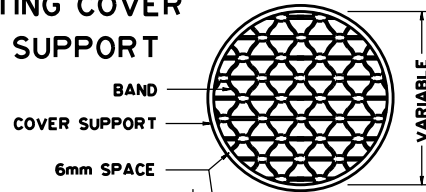
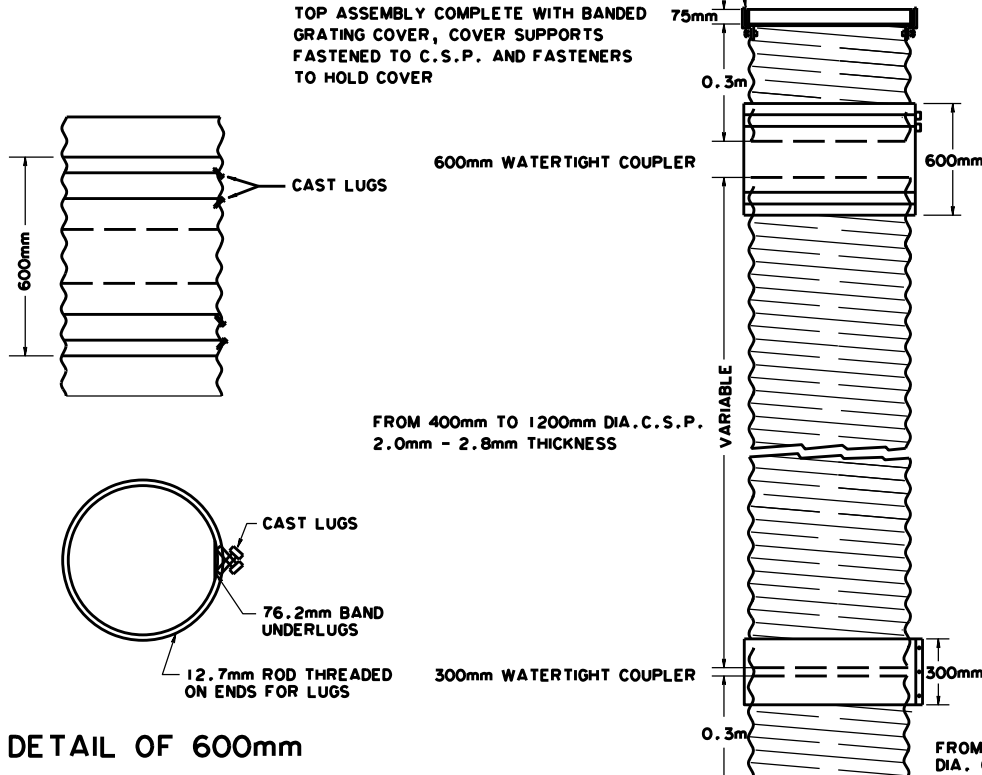


**BANDED GRATING COVER  
AND COVER SUPPORT**



**DETAIL OF GRATING**

TOP ASSEMBLY COMPLETE WITH BANDED GRATING COVER, COVER SUPPORTS FASTENED TO C.S.P. AND FASTENERS TO HOLD COVER

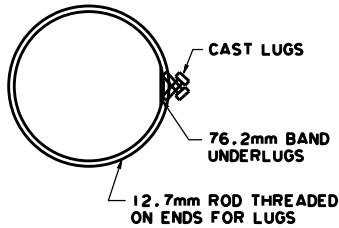


1. STANDARD DEPTH OF DROP INLET IS 1.5m AND WILL BE MEASURED FROM THE TOP OF THE CROSS PIPE.
2. INSTALLATION OF DROP INLET WILL BE PAID FOR AT THE PRICE BID PER UNIT OF STANDARD DEPTH.
3. VERTICAL LENGTH OF DROP INLET EXCEEDING STANDARD DEPTH WILL BE PAID FOR AT THE PRICE BID PER LINEAR METRE FOR INSTALLATION.
4. INSTALLATION OF HORIZONTAL CROSS CULVERT WITH VERTICAL STUD ATTACHED WILL BE PAID FOR AT THE PRICE BID PER LINEAR METRE FOR CORRUGATED STEEL PIPE.

**DETAIL OF 300mm  
WATERTIGHT COUPLER**

COUPLER FASTENING SHALL BE PERFORMED BY DRAWING THE ENDS TOGETHER WITH BOLTS FOR WEDGES TO OBTAIN A TIGHT SEAL.

**DETAIL OF 600mm  
WATERTIGHT COUPLER**



	DWG. NO.	CB-6 2.4.M12
	Original	Nov. 1980
	Revised	Feb. 1985

TYPICAL SECTION  
DROP INLET INSTALLATION INTO  
CORRUGATED STEEL CROSS CULVERT  
(FROM 400mm TO 1200mm INLET PIPE)

OBSOLETE  
March, 2022