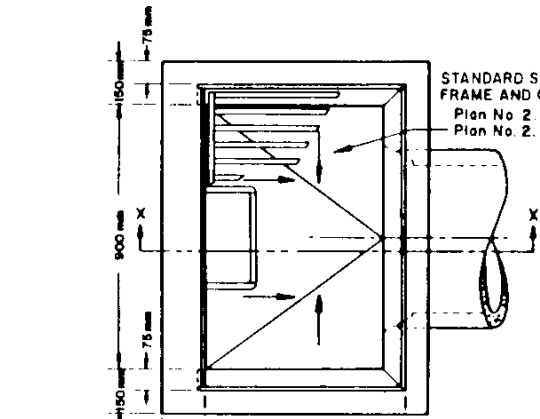
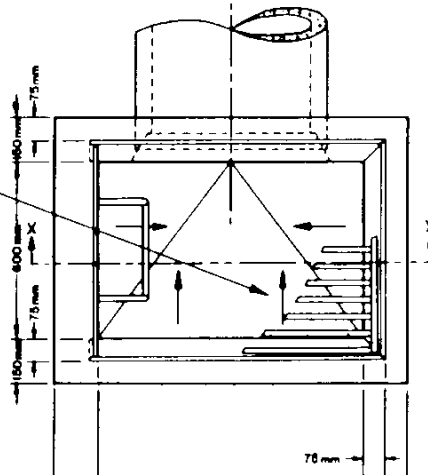


CASE ①

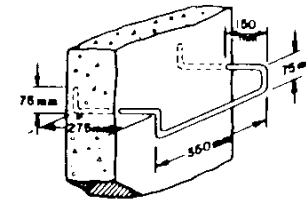


STANDARD STORM DRAIN
FRAME AND GRATE
Plan No. 2.10.M5
Plan No. 2.10.M1

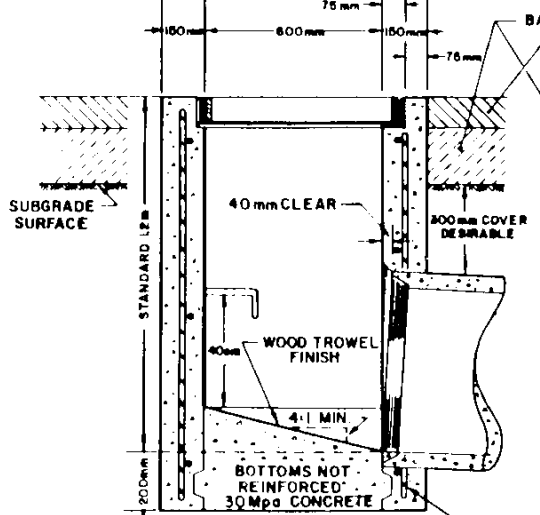
CASE ②



STEP DETAIL

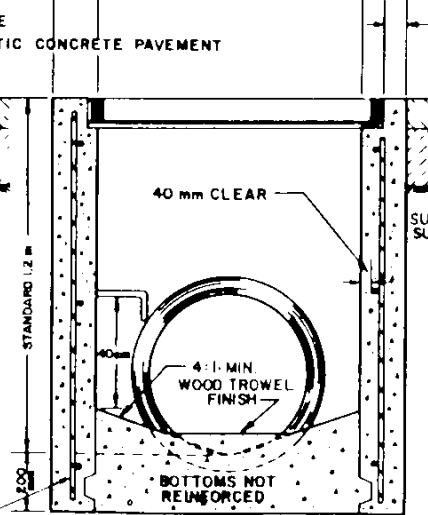


- NOTES :**
1. STEEL LADDER RUNGS TO BE INSTALLED AT 40 cm INTERVALS IN BOXES HAVING A DEPTH OF MORE THAN 1.0 m
 2. DRAIN PIPES TO BE EITHER REINFORCED CONCRETE PIPE OR CORRUGATED STEEL PIPE AS SPECIFIED.
 3. PIPE OR PIPES TO BE INSTALLED IN ANY WALL OR WALLS AS REQUIRED
 4. TOP OF INLET TO BE FLUSH WITH TOP OF FINISHED PAVEMENT PROVISION SHALL BE MADE IN CONSTRUCTION OF INLET TO ACCOMMODATE SURFACE DRAINAGE WHEN HIGHWAY CONSTRUCTION IS IN STAGES
 5. STANDARD STRUCTURE SHOWN. NOMINAL METRIC DIMENSIONS.



BASE COURSE
- ASPHALTIC CONCRETE PAVEMENT

SECTION X-X



SECTION X-X

No. 10 DEFORMED REINFORCING BARS SPACED AT APPROX. 300 mm TO BE PLACED VERTICALLY AND HORIZONTALLY IN A CAGE EFFECT

	DWG. No:	CB - 6 2.10.M 2
	Date:	Original May, 1979
	Revised:	Feb 1987

CONCRETE STORM DRAIN INLET STANDARD 1.2m-600x900mm OPENING