

# Highway 11 Twinning Through Rocky Mountain House Functional Planning Study Update

## Information Session

November 21, 2024 - 4:00 to 8:00 pm

Lou Soppit Community Centre

Rocky Mountain House

# WELCOME



*Highway 11 Looking North towards 53 Avenue*

# Welcome

## Highway 11 Twinning Through Rocky Mountain House Functional Planning Study Update

# Information Session #1

This information session is an informal drop-in format, there will be no presentation.

**The purpose of this information session is to:**

- Introduce the study process
- Outline the study objectives and organization
- Present the constraints and factors affecting development of a twinning plan
- Show the 2003 Twinning Plan
- Share the access management alternatives explored
- Gather your comments and input

Please take a few minutes to review the display panels and discuss the study with project staff.

## Study Purpose

Update the 2003 twinning plan for Highway 11 through the Town of Rocky Mountain House to reflect existing conditions and constraints, and anticipated development and traffic volumes.

## Study Objectives

Update the Twinning Plan to :

- Provide the most appropriate twinning design based on current conditions, constraints and highway design standards
- Confirm access management requirements
- Identify and address, where possible, the impacts of proposed changes to the corridor, including land, environmental resources, utilities, drainage, and others
- Define land requirements

## Study Outcome

The outcome of this study will:

- Help the Province and the Town understand the potential implications of Highway 11 twinning through the Town limits.

## Working Together

### Town of Rocky Mountain House

- Town Administration and Council guide the study progress at key points

### Stakeholders & Members of the Public

- The study team will obtain feedback on alternatives and outcomes, and incorporate where appropriate

### Project Process & Timeline

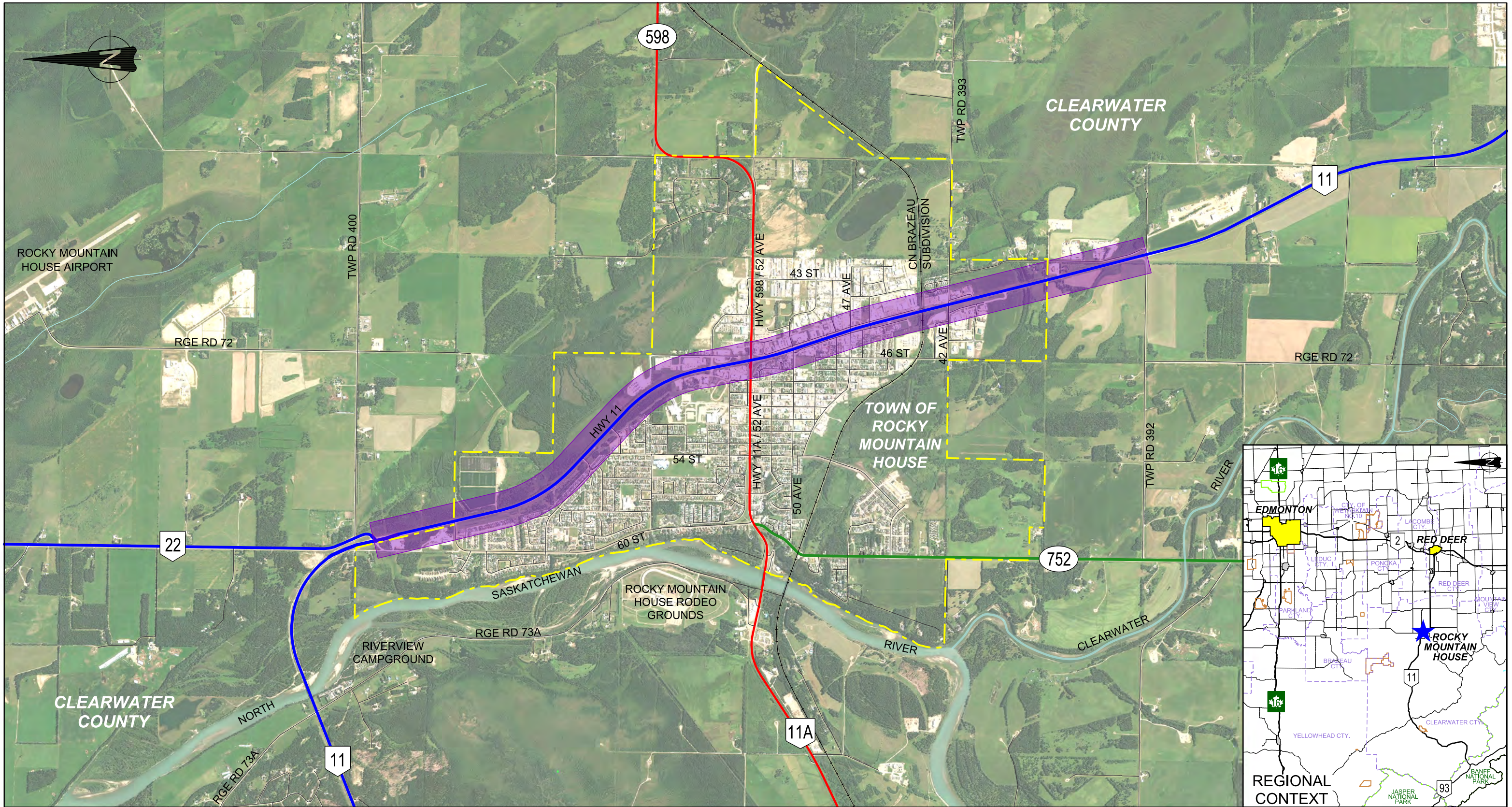




## Study Background

- A functional planning study is the first step in understanding the needs for any future highway upgrading
- Highway 11 is an intra-provincial highway, meaning it accommodates the movement of people and goods and connects provincially significant areas
- Highway 11 through the Town is currently a major two-lane corridor, serving both local and regional traffic
- With construction of the twinning of Highway 11 between Rocky Mountain House and Sylvan Lake underway, the previous twinning plan through Rocky Mountain House (prepared in 2003) requires updating
- This study does not consider a Highway 11 by-pass around Rocky Mountain House
- Construction of the twinning through Rocky Mountain House is not currently on the provincial construction program





CONSULTANT



PROJECT NO. CA001096

LEGEND

- TOWN OF ROCKY MOUNTAIN HOUSE BOUNDARY
- PROVINCIAL HIGHWAY - LEVEL 2
- PROVINCIAL HIGHWAY - LEVEL 3
- PROVINCIAL HIGHWAY - LEVEL 4

- MUNICIPAL ROADS
- STUDY EXTENTS

## STUDY AREA

HIGHWAY 11 TWINNING UPDATE  
 ROCKY MOUNTAIN HOUSE  
 FUNCTIONAL PLANNING STUDY



SCALE N.T.S.

REGION  
CENTRAL

LOCATION  
HWY 11:10 from km 5.49 to km 12.38

DATE  
2024-10-08

DWN  
SH

CHK  
PS

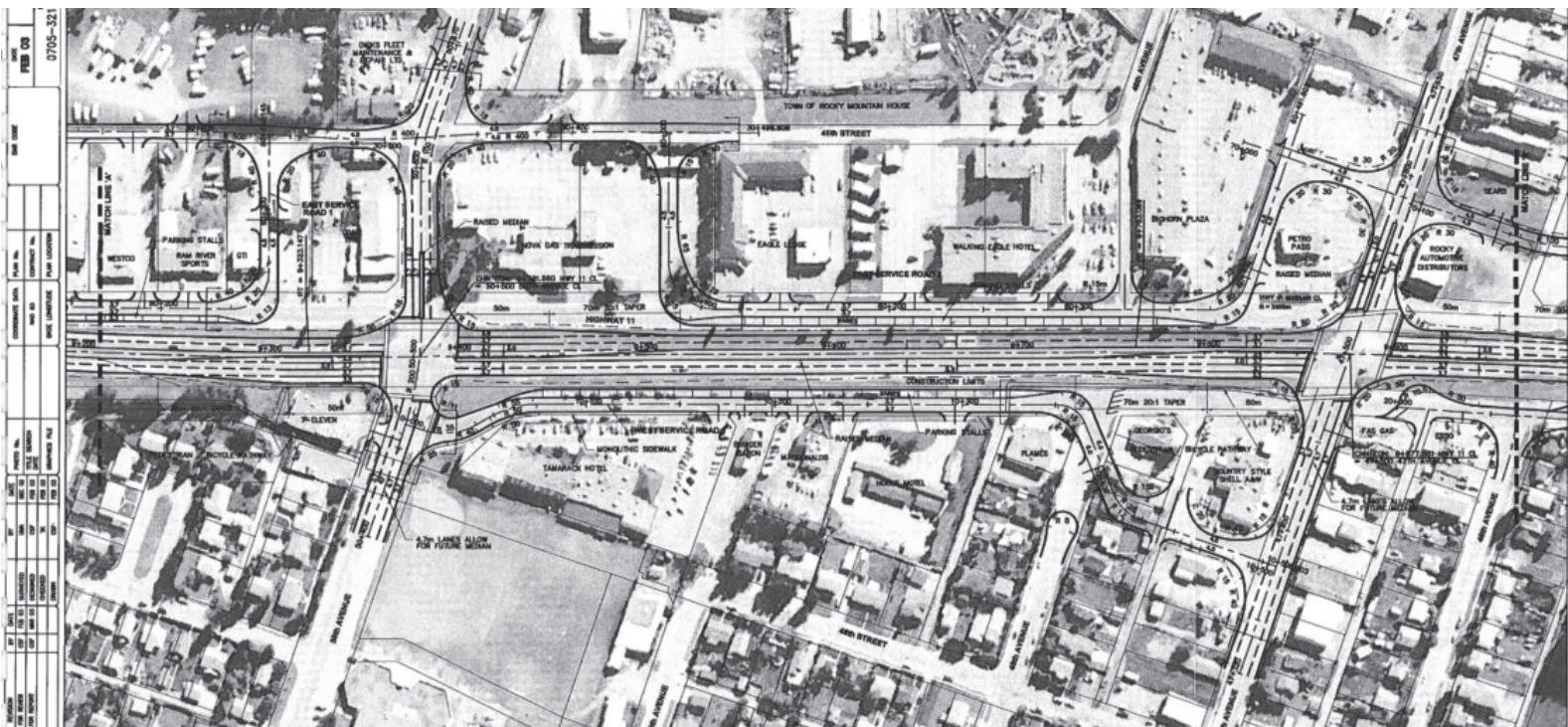
FIGURE 1



## 2003 Functional Plan

The 2003 plan:

- Assumed a four-lane urban divided arterial between the rail crossing and 53 Avenue intersection
  - Modified existing service roads to increase spacing between intersections with the local streets
  - Identified possible land impacts required for revised service road connections
- Development of the 2003 functional plans was based on a future Town population of 13,500
  - The 2001 population in the Town was 6,208







CONSULTANT



PROJECT NO. CA001096

LEGEND

--- ROCKY MOUNTAIN HOUSE BOUNDARY

FOR INFORMATION ONLY



2003 RECOMMENDED PLAN

HIGHWAY 11:10 TWINNING ROCKY MOUNTAIN HOUSE  
FUNCTIONAL PLANNING STUDY  
CLEARWATER COUNTY



PHOTOGRAPHY DATE  
SEPT 2022

LOCATION  
HIGHWAY 11:10 - km 5.49 TO km 12.38

DATE  
2024-10-08

FIGURE  
A-2

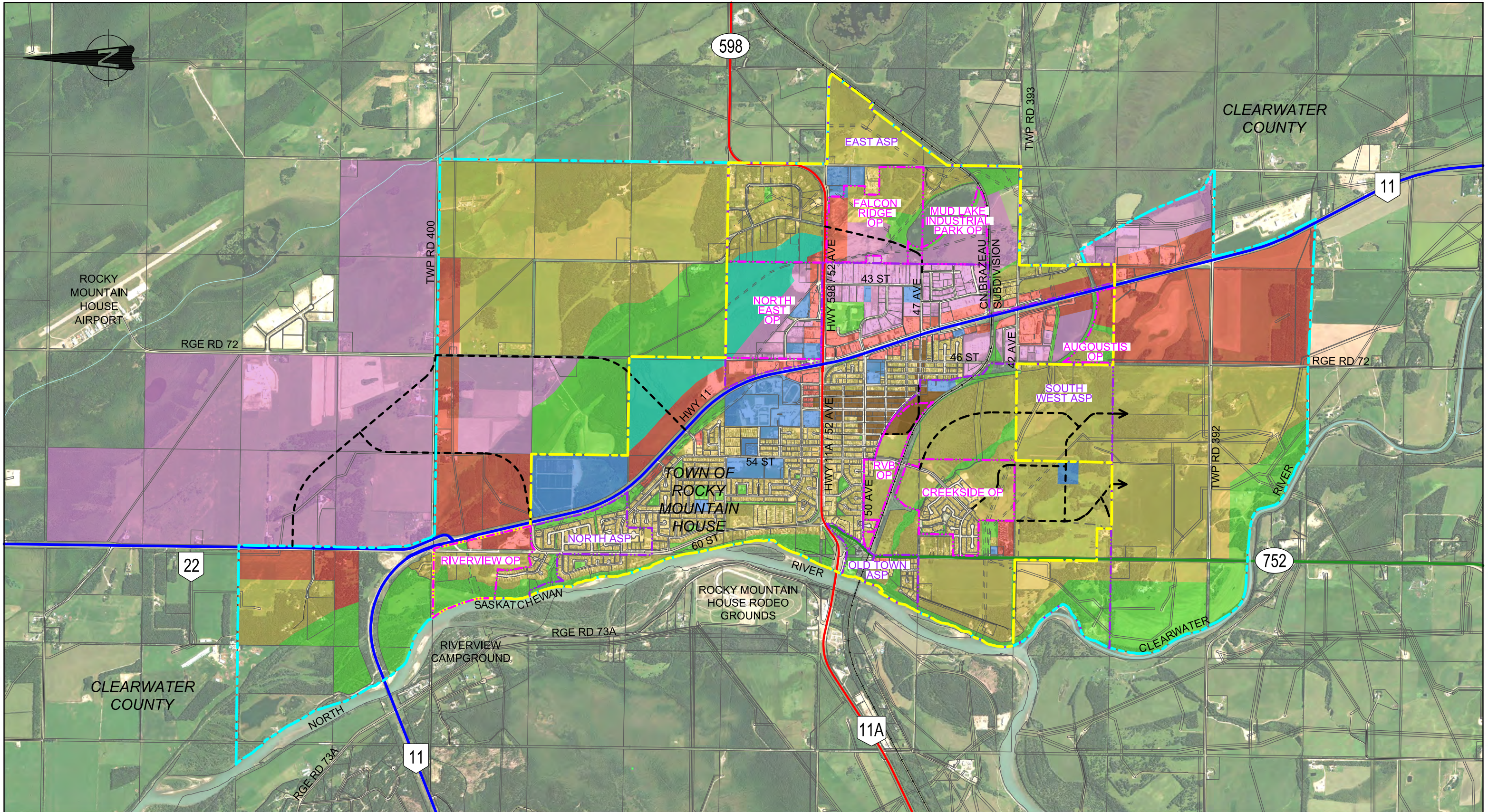
DRAWING  
R-1318-PL002



## Existing Conditions

- Population in the Town has not grown as fast as anticipated in the 2003 study. The 2023 population in the Town was 7,425
- An operational review completed in 2022/2023 indicated that Highway 11 through the Town is currently operating within the acceptable targets set by the Province
- The operational review recommended modifications to improve traffic flow and safety for all users, which are currently being implemented, including:
  - Revised traffic signal timings & replacement of aging infrastructure
  - Various signage and pavement marking changes
  - Intersection and pedestrian facility improvements
- Based on forecast population and traffic growth, as well as operational targets for a highway in a small urban area, it is not currently anticipated that twinning through the Town will be warranted within the next 20-years
- Regular updates to signal timings, changes to access management as opportunity allows, and isolated intersection modifications will maintain acceptable operation levels until twinning is implemented





CONSULTANT  
**CIMA+**  
 PROJECT NO. CA001096

LEGEND	
	PROVINCIAL HIGHWAY - LEVEL 2
	PROVINCIAL HIGHWAY - LEVEL 3
	PROVINCIAL HIGHWAY - LEVEL 4
	MUNICIPAL ROADS
	TOWN OF ROCKY MOUNTAIN HOUSE BOUNDARY
	ASP BOUNDARY
	OUTLINE PLAN BOUNDARY
	LONG TERM TOWN BOUNDARY
	POTENTIAL FUTURE ROAD REALIGNMENT (BY OTHERS)

LAND USE	
	COMMERCIAL
	DOWNTOWN CORE MIXED USE
	ENVIRONMENTALLY SENSITIVE
	INDUSTRIAL
	OPEN SPACE
	PUBLIC & EDUCATIONAL SERVICES
	RESIDENTIAL

SCALE N.T.S.

## LAND USE

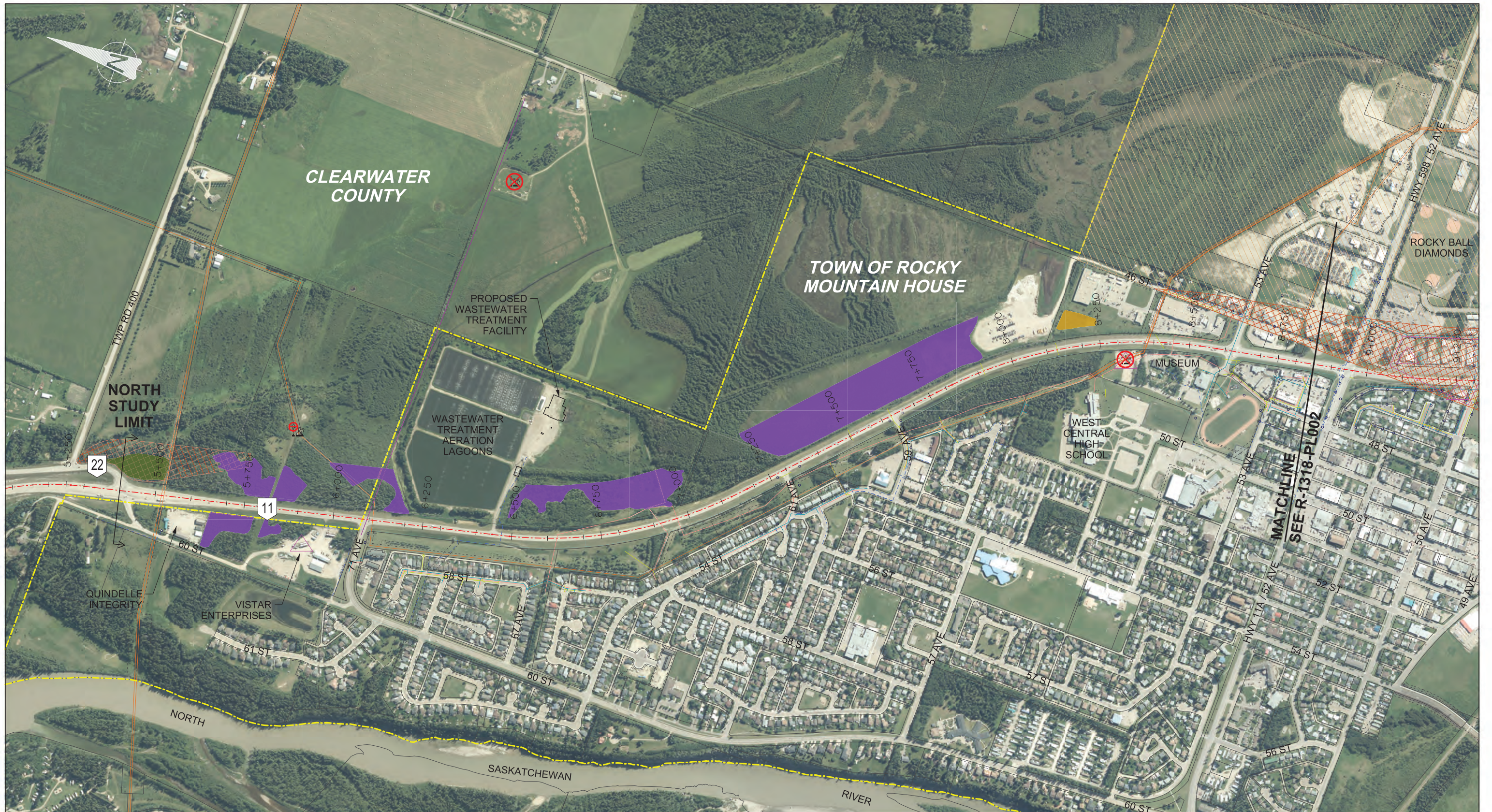
### HIGHWAY 11 TWINNING UPDATE ROCKY MOUNTAIN HOUSE FUNCTIONAL PLANNING STUDY

REGION CENTRAL	LOCATION HWY 11:10 from km 5.49 to km 12.38	DATE 2024-06-20	FIGURE A-2
-------------------	--	--------------------	---------------




















*Alberta*

DRAWING  
R-1318-PL002





CONSULTANT  
  
 PROJECT NO. CA001096

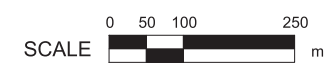
LEGEND		UTILITIES		POTENTIALLY AFFECTED PROPERTIES BY COMINGLED PHC PLUME	
	ROCKY MOUNTAIN HOUSE BOUNDARY		GAS PIPELINE		POTENTIALLY AFFECTED PROPERTIES BY COMINGLED PHC PLUME
	EXISTING HIGHWAY ALIGNMENT		LVP/HVP PIPELINE		POTENTIALLY CONTAMINATED SITE
	EXISTING BRIDGE		POWER LINE		WELLHEAD (ACTIVE) WELLHEAD (SUSPENDED) WELLHEAD (ABANDONED)
	MARSH		SANITARY LINE		
	PEATLAND		STORM LINE		
	SWAMP		STREET LIGHT		
	HISTORIC RESOURCE VALUE 4C		TELUS TRENCH		
					

## EXISTING CONDITIONS PLAN

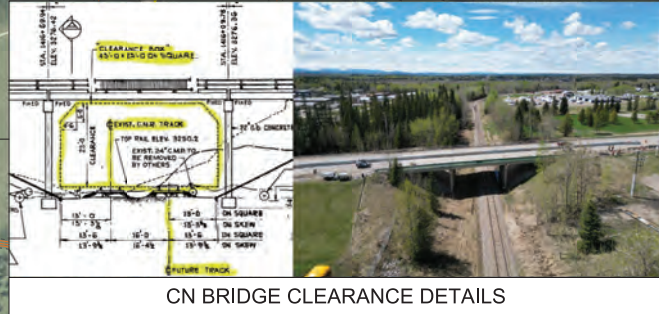
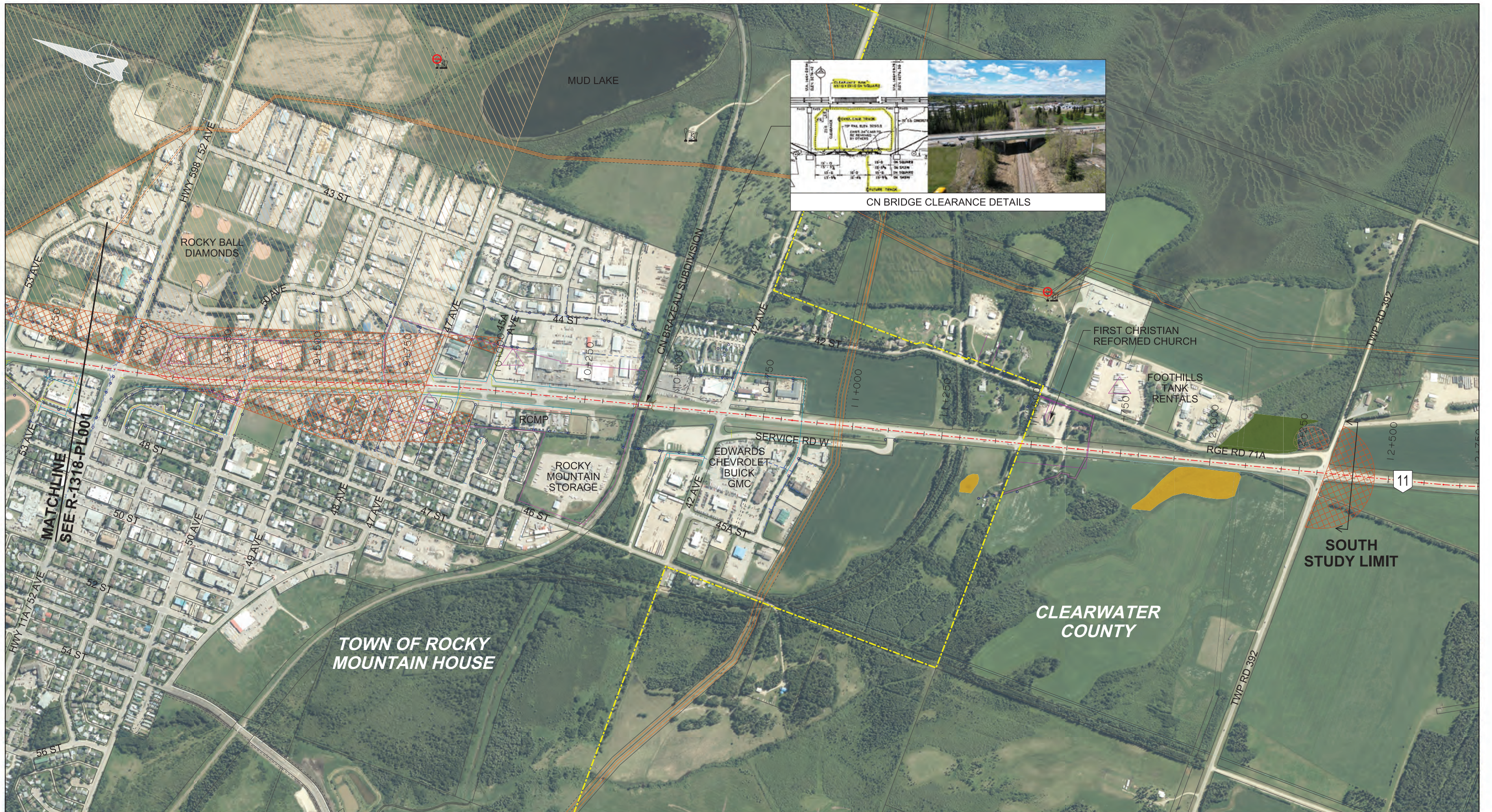
### HIGHWAY 11:10 TWINNING ROCKY MOUNTAIN HOUSE FUNCTIONAL PLANNING STUDY CLEARWATER COUNTY

PHOTOGRAPHY DATE: SEPT 2022  
 LOCATION: HIGHWAY 11:10 - km 5.49 TO km 12.38  
 DATE: 2024-10-08  
 FIGURE: A-1  
 DRAWING: R-1318-PL001









CONSULTANT



PROJECT NO. CA001096

LEGEND

- ROCKY MOUNTAIN HOUSE BOUNDARY
- EXISTING HIGHWAY ALIGNMENT
- EXISTING BRIDGE
- ENVIRONMENTAL**
- MARSH
- PEATLAND
- SWAMP
- HISTORICAL**
- HISTORIC RESOURCE VALUE 4C

UTILITIES

- GAS PIPELINE
- LVP/HVP PIPELINE
- POWER LINE
- SANITARY LINE
- STORM LINE
- STREET LIGHT
- TELUS TRENCH
- HRIA TARGET AREA

- POTENTIALLY AFFECTED PROPERTIES BY COMINGLED PHC PLUME
- POTENTIALLY CONTAMINATED SITE
- WELLHEAD (ACTIVE)
- WELLHEAD (SUSPENDED)
- WELLHEAD (ABANDONED)



# EXISTING CONDITIONS PLAN

## HIGHWAY 11:10 TWINNING ROCKY MOUNTAIN HOUSE

### FUNCTIONAL PLANNING STUDY

#### CLEARWATER COUNTY



PHOTOGRAPHY DATE  
SEPT 2022

LOCATION  
HIGHWAY 11:10 - km 5.49 TO km 12.38

DATE  
2024-10-08

FIGURE  
A-2

DRAWING  
R-1318-PL002



## Alternative Development

- With limited right-of-way available, options for twinning of the core lanes between the CN rail line and 53 Avenue are limited, significant changes from the 2003 plan are not proposed
- Generally, the opportunities for updates to the plan are related to access management (reducing land impacts) and the adjacent roadway network connections
- The alternatives shown aim to:
  - Maximize use of adjacent roadways and available right-of-way
  - Optimize connections to existing service roads
  - Reduce impacts to highway operations by service roads
- Feedback received from the stakeholders and public will be incorporated where appropriate to finalize alternative(s).
- Evaluation leading to selection of a proposed plan will consider several factors including but not limited to:
  - Operational life, compatibility with design standards
  - Property and business impacts
  - Preliminary cost estimates
  - Utility Impacts
  - Environmental and Historical Resource impacts



# TWINNING OPTION EAST (NORTH)



# TWINNING OPTION WEST (SOUTH)



CONSULTANT



PROJECT NO. CA001096

**LEGEND**

- ROCKY MOUNTAIN HOUSE BOUNDARY
- POTENTIAL ROW BOUNDARY
- POTENTIAL FUTURE ROAD REALIGNMENT (BY OTHERS)
- POTENTIAL SERVICE ROAD REMOVAL

**UTILITIES**

- GAS PIPELINE
- LVP/HVP PIPELINE
- POWER LINE
- SANITARY LINE
- STORM LINE
- o STREET LIGHT
- TELUS TRENCH

**DRAFT**  
FOR DISCUSSION ONLY



## TWINNING CONCEPT PLAN

HIGHWAY 11:10 TWINNING ROCKY MOUNTAIN HOUSE  
FUNCTIONAL PLANNING STUDY  
CLEARWATER COUNTY



PHOTOGRAPHY DATE  
SEPT 2022

LOCATION  
HIGHWAY 11:10 - km 5.49 TO km 12.38

DATE  
2024-10-30





FIGURE  
A-3








DRAWING  
R-1318-PL003






CONSULTANT  
  
 PROJECT NO. CA001096

LEGEND	
	ROCKY MOUNTAIN HOUSE BOUNDARY
	POTENTIAL ROW BOUNDARY
	POTENTIAL FUTURE ROAD REALIGNMENT (BY OTHERS)
	POTENTIAL SERVICE ROAD REMOVAL

UTILITIES	
	GAS PIPELINE
	LVP/HVP PIPELINE
	POWER LINE
	SANITARY LINE
	STORM LINE
	STREET LIGHT
	TELUS TRENCH

**DRAFT**  
 FOR DISCUSSION ONLY

SCALE  
 0 50 125 200  
 m

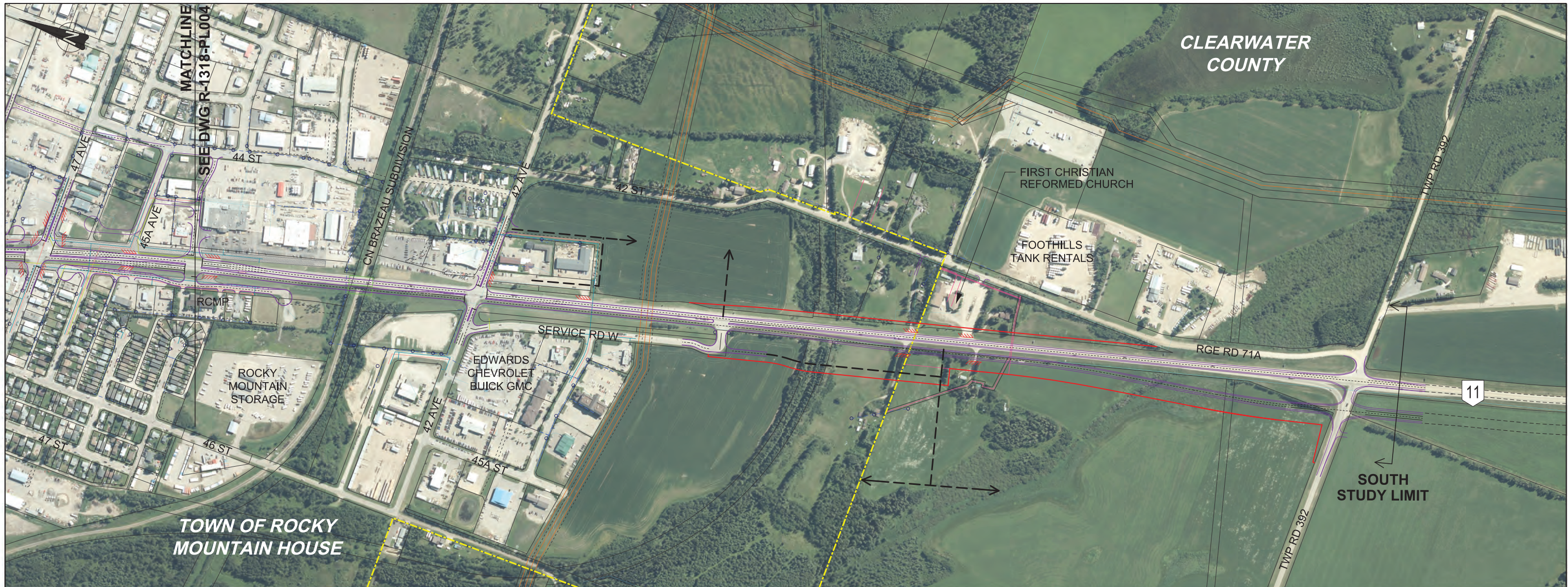


**TWINNING CONCEPT PLAN**  
 HIGHWAY 11:10 TWINNING ROCKY MOUNTAIN HOUSE  
 FUNCTIONAL PLANNING STUDY  
 CLEARWATER COUNTY

PHOTOGRAPHY DATE SEPT 2022	LOCATION HIGHWAY 11:10 - km 5.49 TO km 12.38	DATE 2024-10-30	FIGURE A-4	DRAWING R-1318-PL004
-------------------------------	---	--------------------	---------------	-------------------------







CONSULTANT



PROJECT NO. CA001096

LEGEND

- ROCKY MOUNTAIN HOUSE BOUNDARY
- POTENTIAL ROW BOUNDARY
- POTENTIAL FUTURE ROAD REALIGNMENT (BY OTHERS)
- POTENTIAL SERVICE ROAD REMOVAL

UTILITIES

- GAS PIPELINE
- LVP/HVP PIPELINE
- POWER LINE
- SANITARY LINE
- STORM LINE
- STREET LIGHT
- TELUS TRENCH

**DRAFT**  
FOR DISCUSSION ONLY



**TWINNING CONCEPT PLAN**  
HIGHWAY 11:10 TWINNING ROCKY MOUNTAIN HOUSE  
FUNCTIONAL PLANNING STUDY  
CLEARWATER COUNTY



PHOTOGRAPHY DATE JULY 2020	LOCATION HIGHWAY 11:10 - km 5.49 TO km 12.38	DATE 2024-10-30	FIGURE A-5	DRAWING R-1318-PL005
-------------------------------	---	--------------------	---------------	-------------------------



## Next Steps

- Review and summarize Information Session comments
- Finalize alternative(s) incorporating stakeholder and public feedback where appropriate
- Review and evaluate alternatives
- Select preferred alternative
- Assess environmental, stormwater, bridge planning, and geotechnical requirements
- Develop functional plans
- Hold Information Session 2 to present the proposed plan



Highway 11 Looking North towards 42 Avenue

## Keep In Touch



Your input is important. **Please fill out a comment form.**



Was the information provided helpful in understanding the study? Please provide your general comments on the study information presented.



To receive notification of the next information session, please provide your email address on the comment forms or sign in sheet.

Information session materials will be available at:  
<https://www.alberta.ca/highway-11-rocky-mountain-house>

## Thank you for attending!

Please plan to attend the next session in Winter 2025