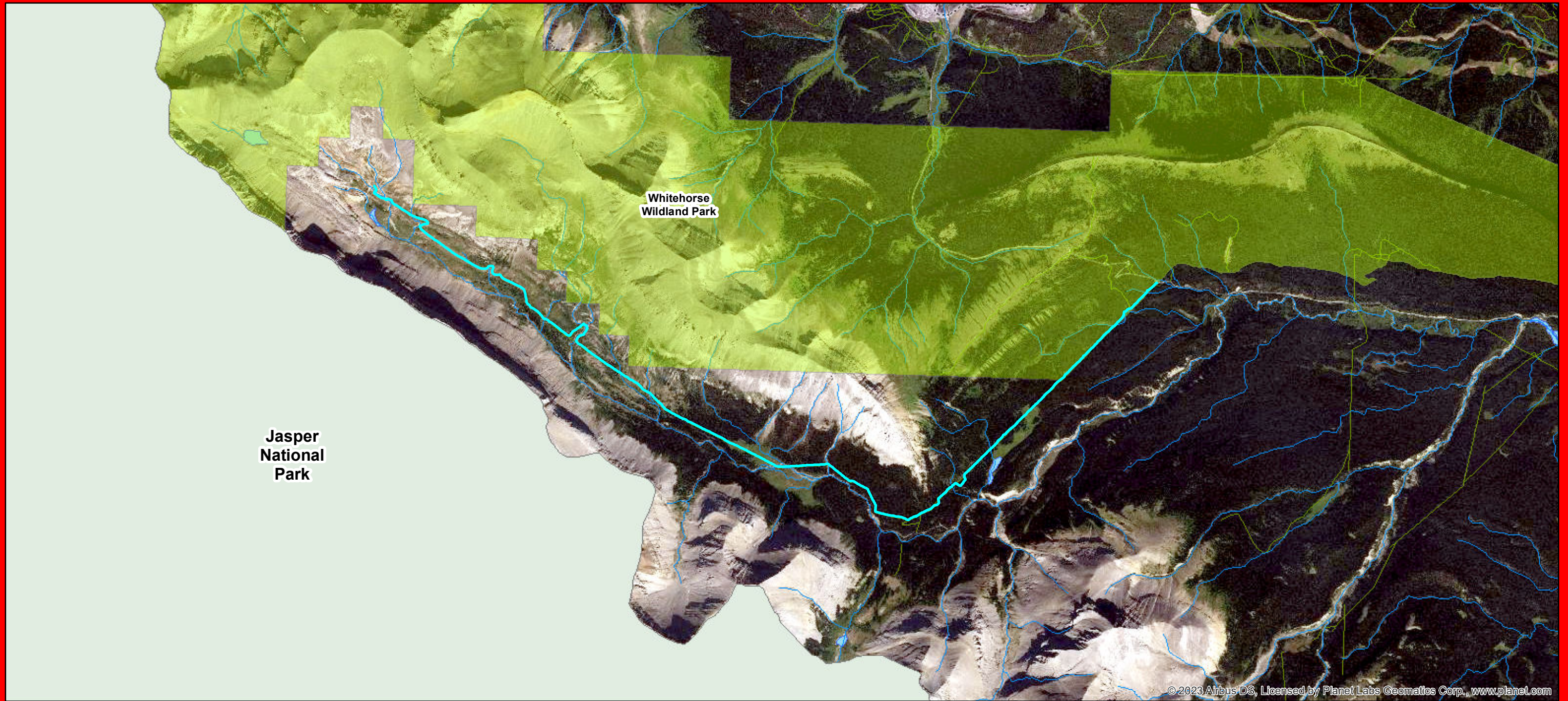


Temporary Trail Closure



Closure of provincial trails
PLAR 199.4(1) The director, or a trail manager with prior authorization from the director, may close all or any part of a provincial trail for the purpose of trail maintenance or in order to protect the provincial trail from damage.

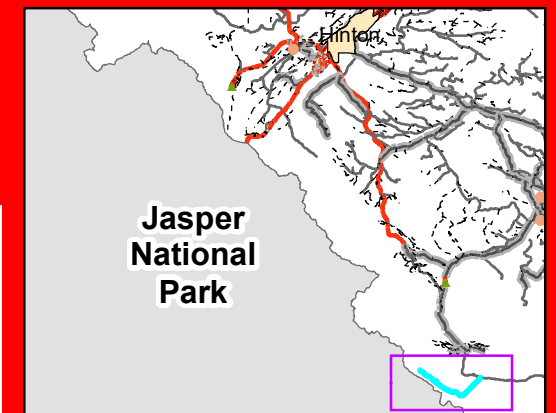
General Location Lat: 53.863 N° Long: -117.290 W°
Effective Date: August 1st, 2024

The trail will be closed for construction from August 1 to October 15th

For more Information call 310-LAND(5263)



Informational Text
Alberta Ministry of Environment and Parks
Where applicable:
Data files provided by the Government of Alberta under
The Alberta Open Government License of November 2014
Maple Trees Data provided by 'SAS CANADA'
SPOD Area Data, Licensed by Inertec Consulting Corp.
Lethbridge, Alberta, Canada
Data provided by: Source: Esri, DeLorme, GeoEye, Earthstar
Geographic, CNRS/Airbus, DS, USDA, USGS, AeroGRID,
IGN, and the GIS User Community
The Minister and the Crown provides this information
without warranty or representation in any matter
including but not limited to whether the data information
is correct, accurate or free from error, defect, damage,
or any use, whether it is otherwise stated or implied
for any use whatsoever, make of it.
© 2023 Government of Alberta
SAS/ESRI TM



1:50,000

0 250 500 1,000 1,500 2,000 2,500 3,000
Metres