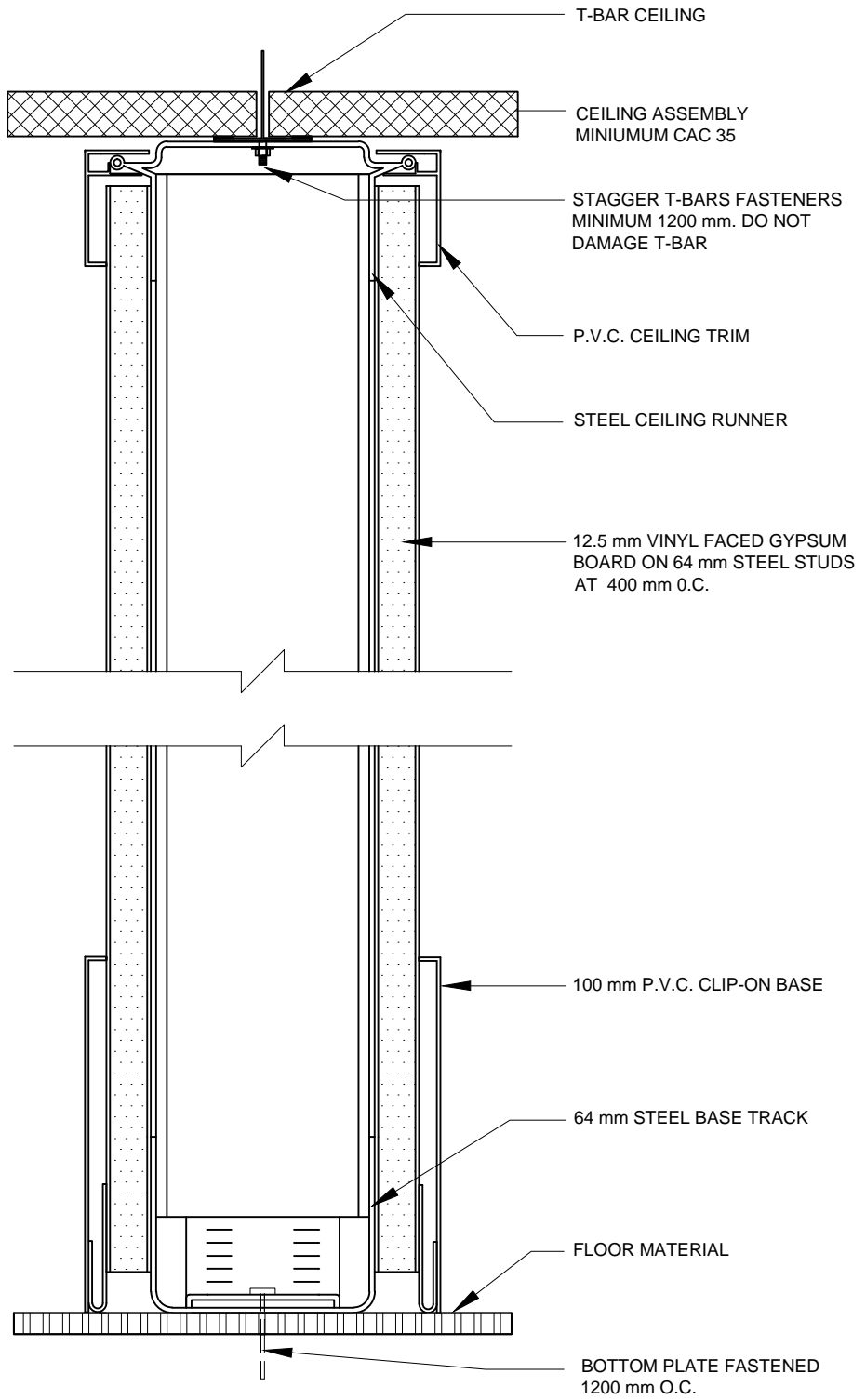
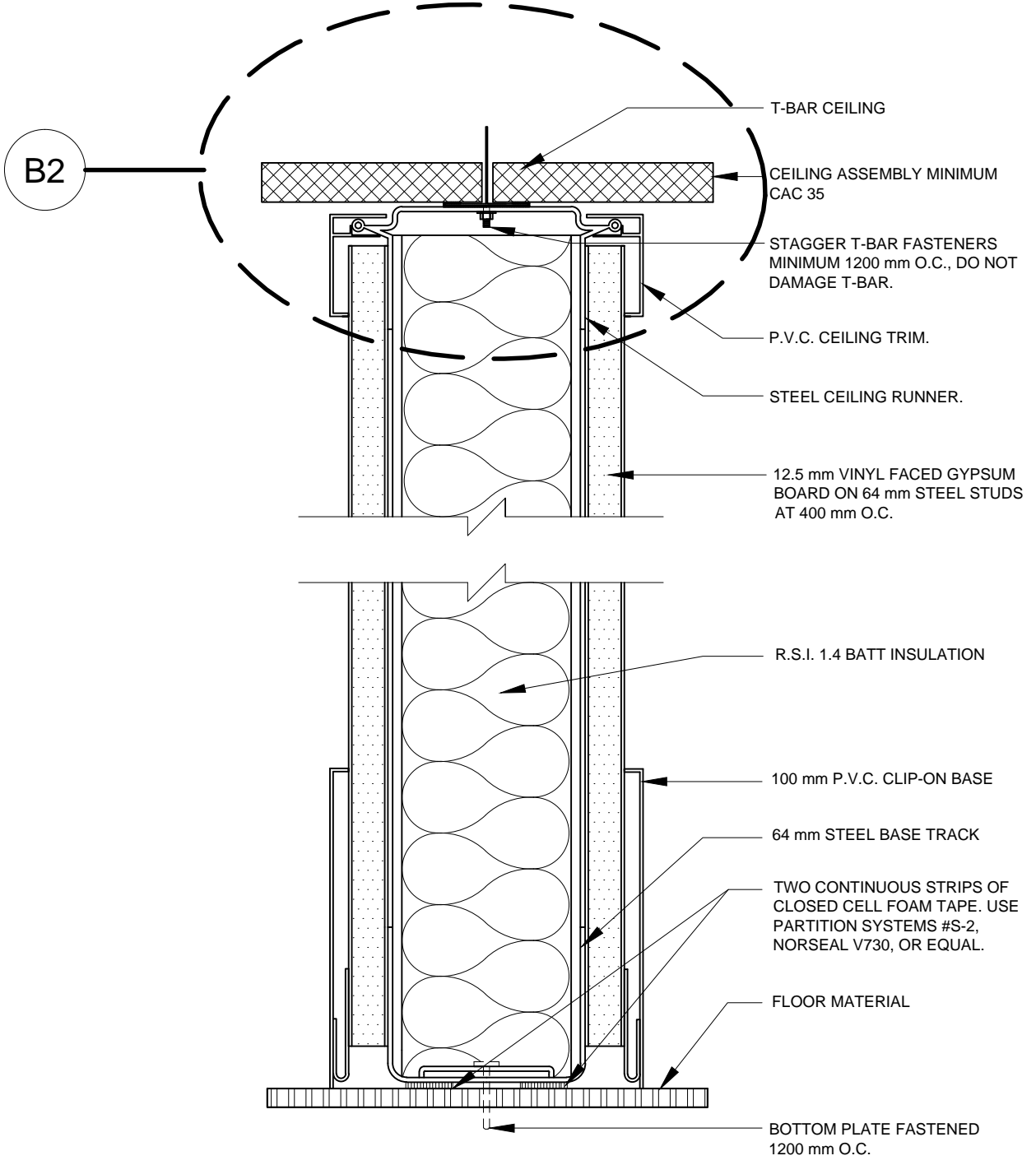


Log in: elia.gozdzik \goals\shared\INFRA\CAP\CAP-TS\Interior\_Partition\_Details\A.dwg Dec 09, 2014 - 9:27am

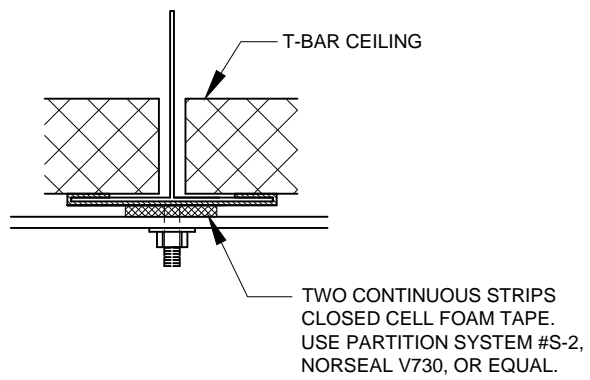


**A** **TYPICAL DEMOUNTABLE PARTITION**  
SCALE: 1:2

Login: elia.gozdzik \\goals\shared\INFRA\CAP\CAP-TS\Interior\_Partition\_Details\B.dwg Dec 09, 2014 - 9:27am



**B1** DEMOUNTABLE PARTITION C/W INSULATION  
SCALE: 1:2



**B2** DETAIL OF T - BAR AND CLIP CONNECTION  
SCALE: 1:1

**NOTE:**  
 PROVIDE AIRTIGHT SEALS  
 AROUND ALL MECHANICAL  
 PENETRATIONS THROUGH  
 ASSEMBLY. ALL JOINTS TO  
 BE TAPED AND FILLED.

SILICONE CAULKING  
 (CGSB-19.13-M87) TO  
 EACH SIDE

**C2**

2 LAYERS 16 mm TYPE X  
 GYPSUM BOARD FASTENED  
 TOGETHER AT TOP AND AT  
 T-BAR

CEILING ASSEMBLY. ALL JOINTS  
 WHERE CROSS-T'S PENETRATE  
 DRYWALL MUST BE SEALED  
 WITH CAULKING

T-BAR FASTENERS MINIMUM  
 1200 mm O.C. DO NOT DAMAGE  
 T-BAR

U/S OF  
 STRUCTURE

U-CHANNEL OR DOUBLE L-TRIMS  
 FASTENED TO STRUCTURE,  
 ALLOWING FOR DEFLECTION  
 WHILE STILL MAINTAINING WALL  
 STABILITY.

BATT INSULATION,  
 PROVIDE A TIGHT SEAL

CEILING ASSEMBLY  
 MINIMUM CAC 35

PVC CEILING TRIM.

STEEL CEILING RUNNER.

12.5 mm VINYL FACED  
 GYPSUM BOARD ON  
 64 mm STEEL STUDS  
 AT 400 mm O.C.

R.S.I. 1.4 BATT INSULATION

100 mm P.V.C. CLIP-ON BASE

64 mm STEEL BASE TRACK

TWO CONTINUOUS STRIPS OF  
 CLOSED CELL FOAM TAPE. USE  
 PARTITION SYSTEMS #S-2,  
 NORSEAL V730, OR EQUAL.

FLOOR MATERIAL

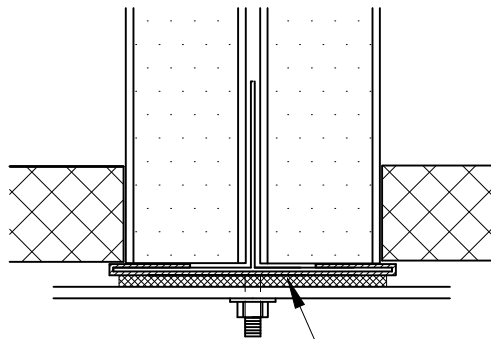
BOTTOM PLATE FASTENED AT  
 1200 mm O.C.

**C1**

**DEMOUNTABLE PARTITION C/W PLENUM SOUND BARRIER**

SCALE: 1:2

Login: elia.gozdzik \\goals\shared\INFRAS\CAP\CAP-TS\Interior\_Partition\_Details\C.dwg Dec 09, 2014 - 9:38am



TWO CONTINUOUS STRIPS  
CLOSED CELL FOAM TAPE.  
USE PARTITION SYSTEM #S-2,  
NORSEAL V730, OR EQUAL.

**C2**

**DETAIL OF T - BAR AND CLIP CONNECTION**

SCALE: 1:1

**Government of Alberta** ■  
Infrastructure

**INTERIOR DETAILS**

INTERIOR DESIGN SECTION

DETAIL  
NUMBER

**C**

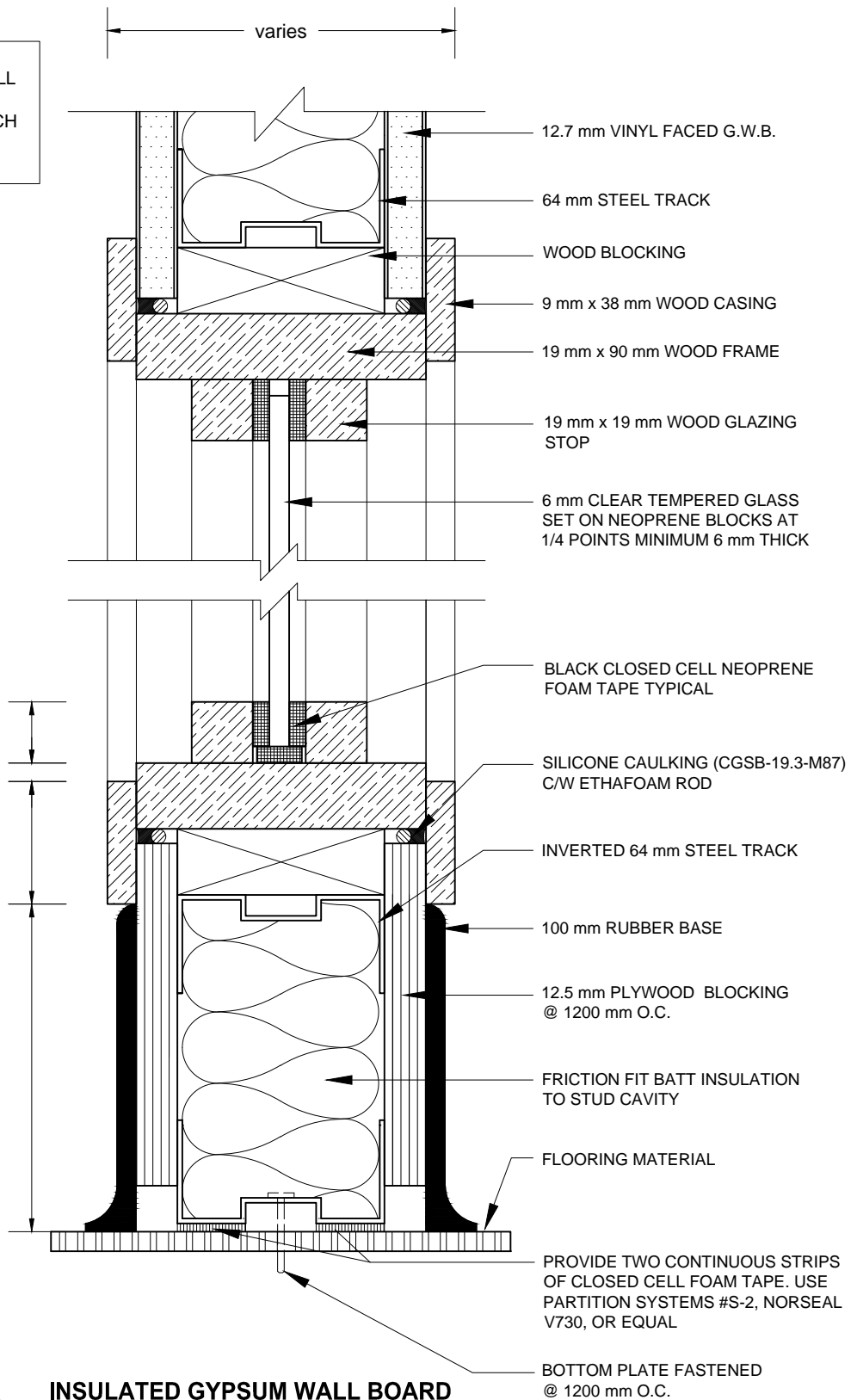
DRAWN BY  
E. GOZDZIK

DATE  
2014-11-28

CHECKED BY  
A. FARHALL

DATE  
2014-11-28

**NOTE:**  
PARTITION TYPE SHALL NOT BE USED WHERE CONFIDENTIAL SPEECH PRIVACY BETWEEN ROOMS IS REQUIRED.



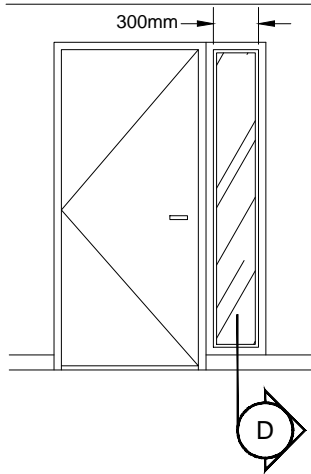
DIMENSION AS REQUIRED TO CONSTRUCT

**D**

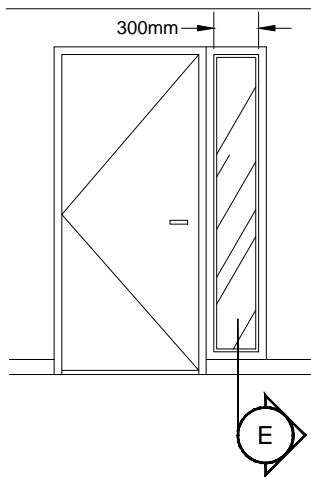
**INSULATED GYPSUM WALL BOARD PARTITION C/W SINGLE GLAZING**

SCALE: 1:2

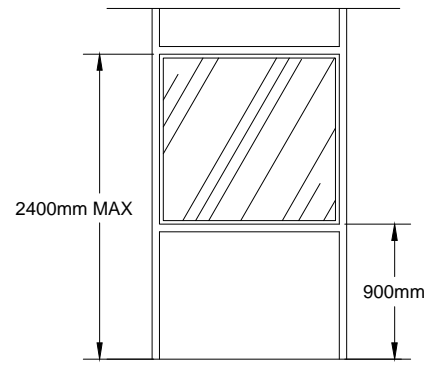
Log in: elia.gozdzik \goals\shared\INFRASCAP\CAP-TS\Interior\_Partition\_Details\D.dwg Dec 09, 2014 - 9:33am



**DOOR & SIDELIGHT C/W WOOD FRAMES**  
SCALE: 1:50



**DOOR & SIDELIGHT C/W DEMOUNTABLE PARTITION FRAME**  
SCALE: 1:50



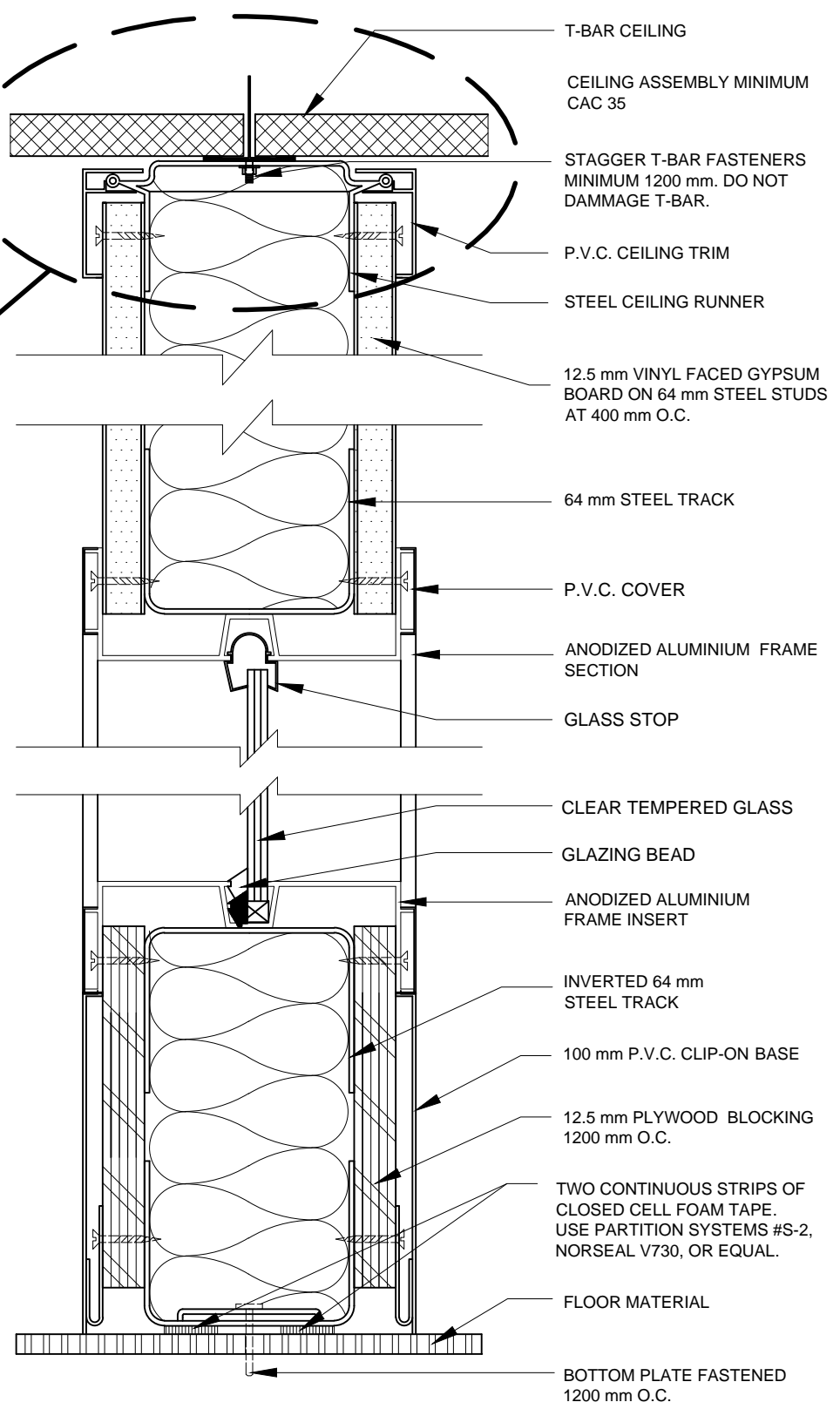
**GLAZING C/W DEMOUNTABLE PARTITION FRAME**  
SCALE: 1:50

**NOTE:** OPTIONAL ELEVATION FOR GLAZING WITHIN TYPE D OR E

Login: elia.gozdzik \goals\shared\INFRA\CAP\CAP-TS\Interior\_Partition\_Details\E.dwg Dec.09.2014 - 9:34am

**NOTE:**  
NOT TO BE USED WITHIN  
WALLS THAT DIVIDE  
ROOMS REQUIRING  
CONFIDENTIAL SPEECH  
PRIVACY

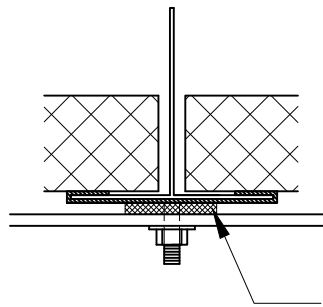
**E2**



**E1** **DEMOUNTABLE PARTITION C/W SINGLE GLAZING**  
SCALE: 1:2



Login: elia.gozdzik \\goals\shared\INFRAS\CAP\CAP-TS\Interior\_Partition\_Details\E.dwg Dec 09, 2014 - 9:40am



TWO CONTINUOUS STRIPS  
CLOSED CELL FOAM TAPE.  
USE PARTITION SYSTEM #S-2,  
NORSEAL V730, OR EQUAL.

**E2**

**DETAIL OF T - BAR AND CLIP CONNECTION**

SCALE: 1:1

**Government of Alberta** ■  
Infrastructure

**INTERIOR DETAILS**

INTERIOR DESIGN SECTION

DETAIL  
NUMBER

**E**

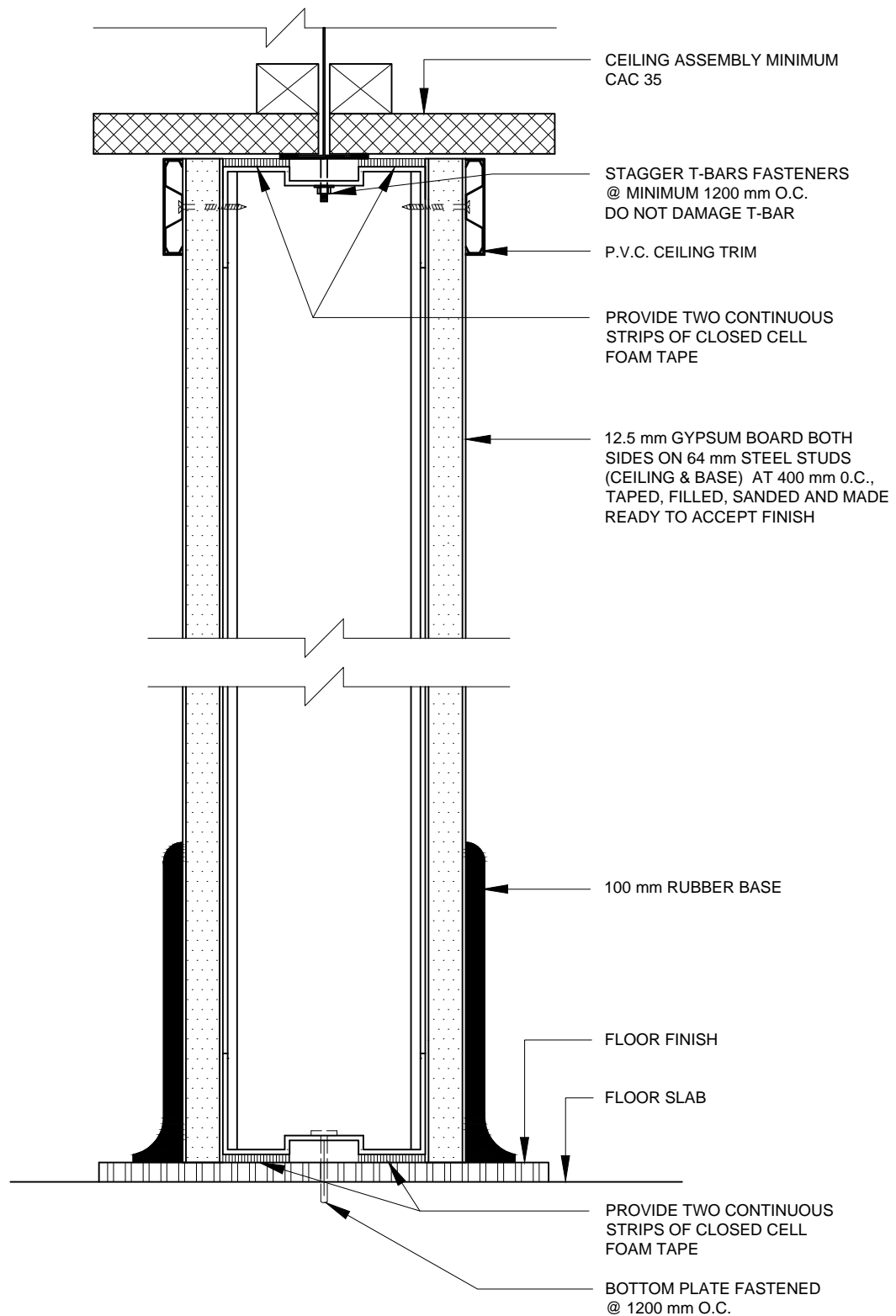
DRAWN BY  
E. GOZDZIK

DATE  
2014-11-28

CHECKED BY  
A. FARHALL

DATE  
2014-11-28

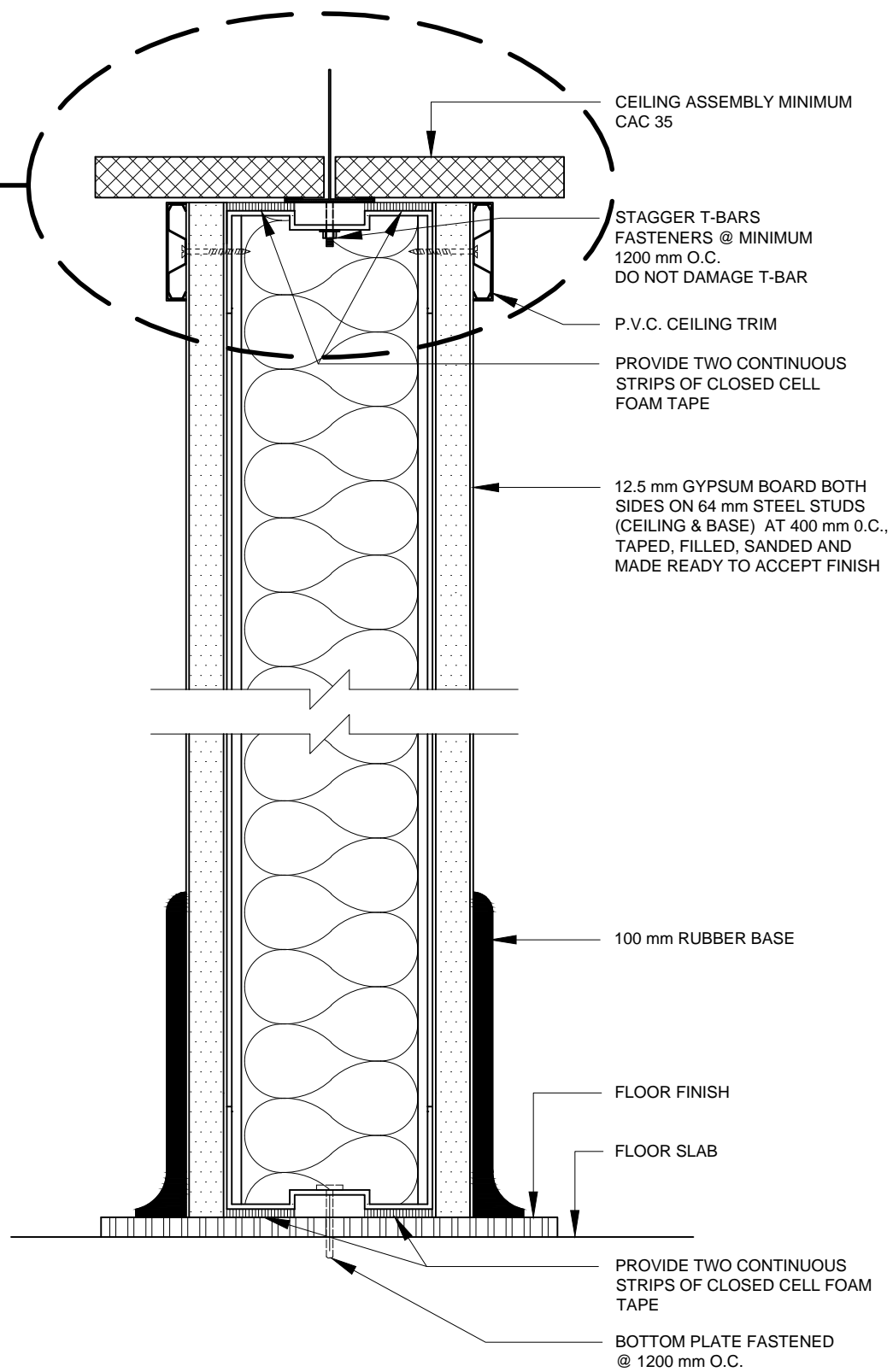
Login: elia.gozdzik \goals\shared\INFRAS\CAP\CAP-TS\Interior\_Partition\_Details\F.dwg Dec.09.2014 - 9:41am



**F** **GYPSUM BOARD PARTITION**  
SCALE: 1:2

Login: elia.gozdzik \goals\shared\INFRA\CAP\CAP-TS\Interior\_Partition\_Details\G.dwg Dec 09, 2014 - 9:42am

G2



G1

**GYPSUM BOARD PARTITION C/W INSULATION**

SCALE: 1:2

**Government of Alberta**  
Infrastructure

**INTERIOR DETAILS**

INTERIOR DESIGN SECTION

DETAIL NUMBER

DRAWN BY  
E. GOZDZIK

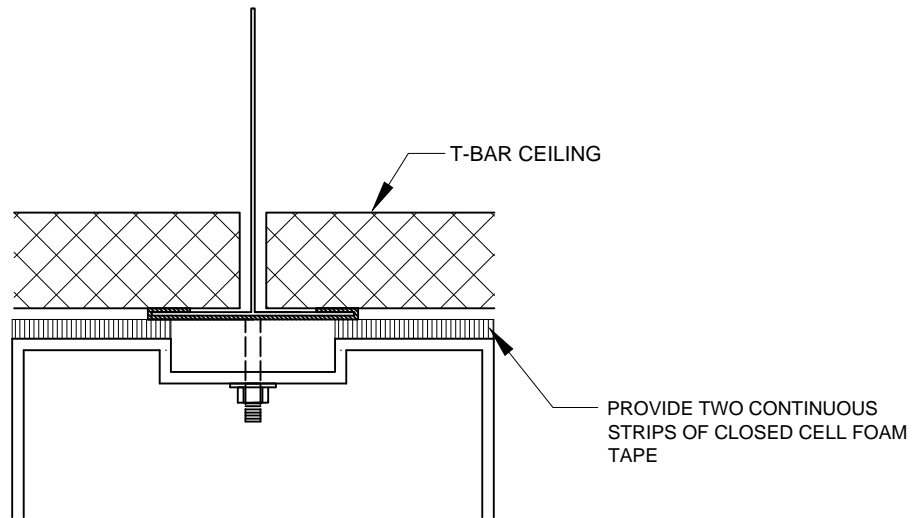
DATE  
2014-11-28

CHECKED BY  
A. FARHALL

DATE  
2014-11-28

**G**

Login: elia.gozdzik \\goals\shared\INFRAS\CAP\CAP-TS\Interior\_Partition\_Details\G.dwg Dec 09, 2014 - 9:42am



G2

**DETAIL OF T - BAR AND CLIP CONNECTION**

SCALE: 1:1

**Government of Alberta**  
Infrastructure

**INTERIOR DETAILS**

INTERIOR DESIGN SECTION

DETAIL NUMBER

**G**

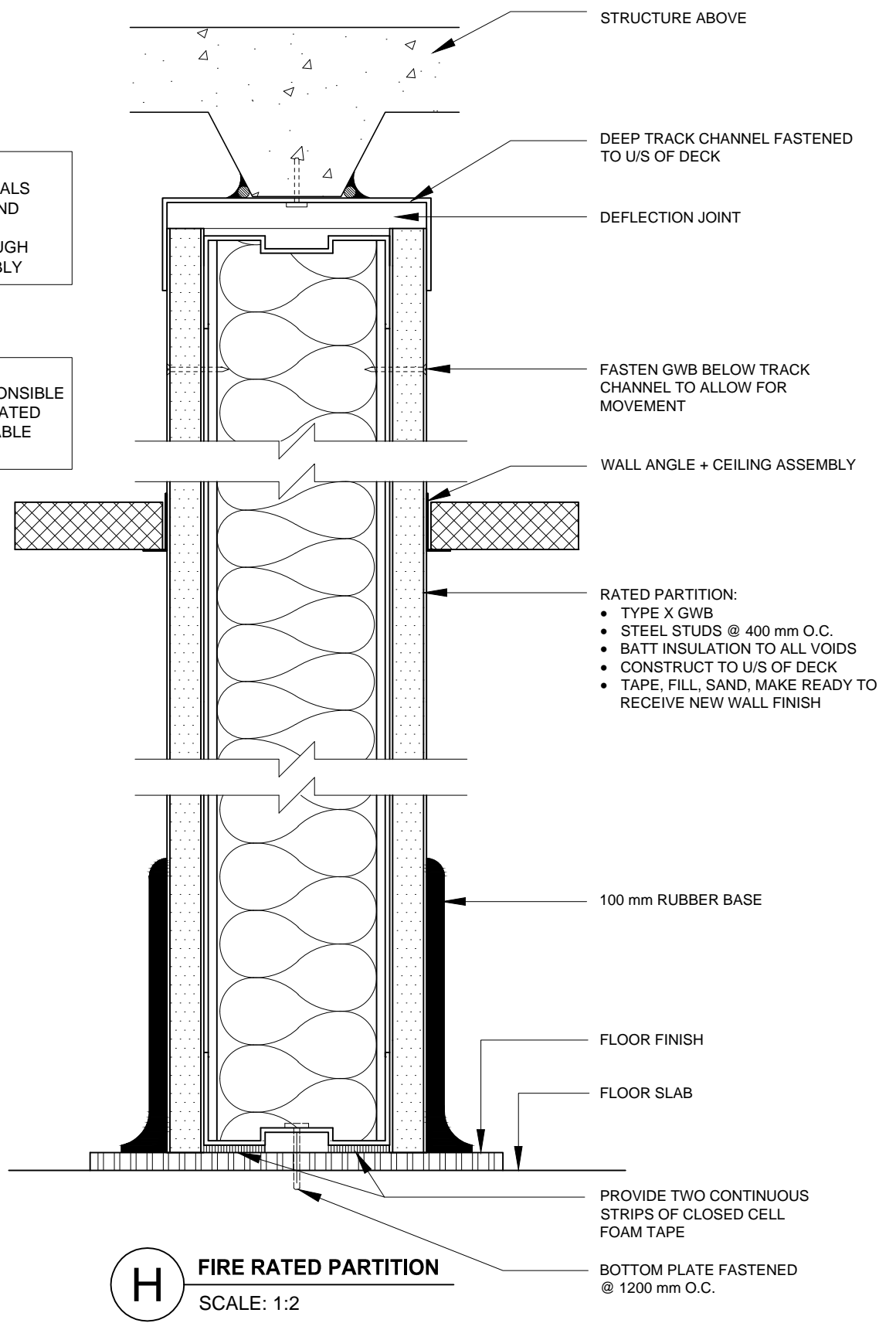
DRAWN BY  
E. GOZDZIK

DATE  
2014-11-28

CHECKED BY  
A. FARHALL

DATE  
2014-11-28

login: elia.gozdzik \goals\shared\INFRAS\CAP\CAP-TS\Interior\_Partition\_Details\H.dwg Dec 09, 2014 - 9:43am

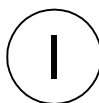
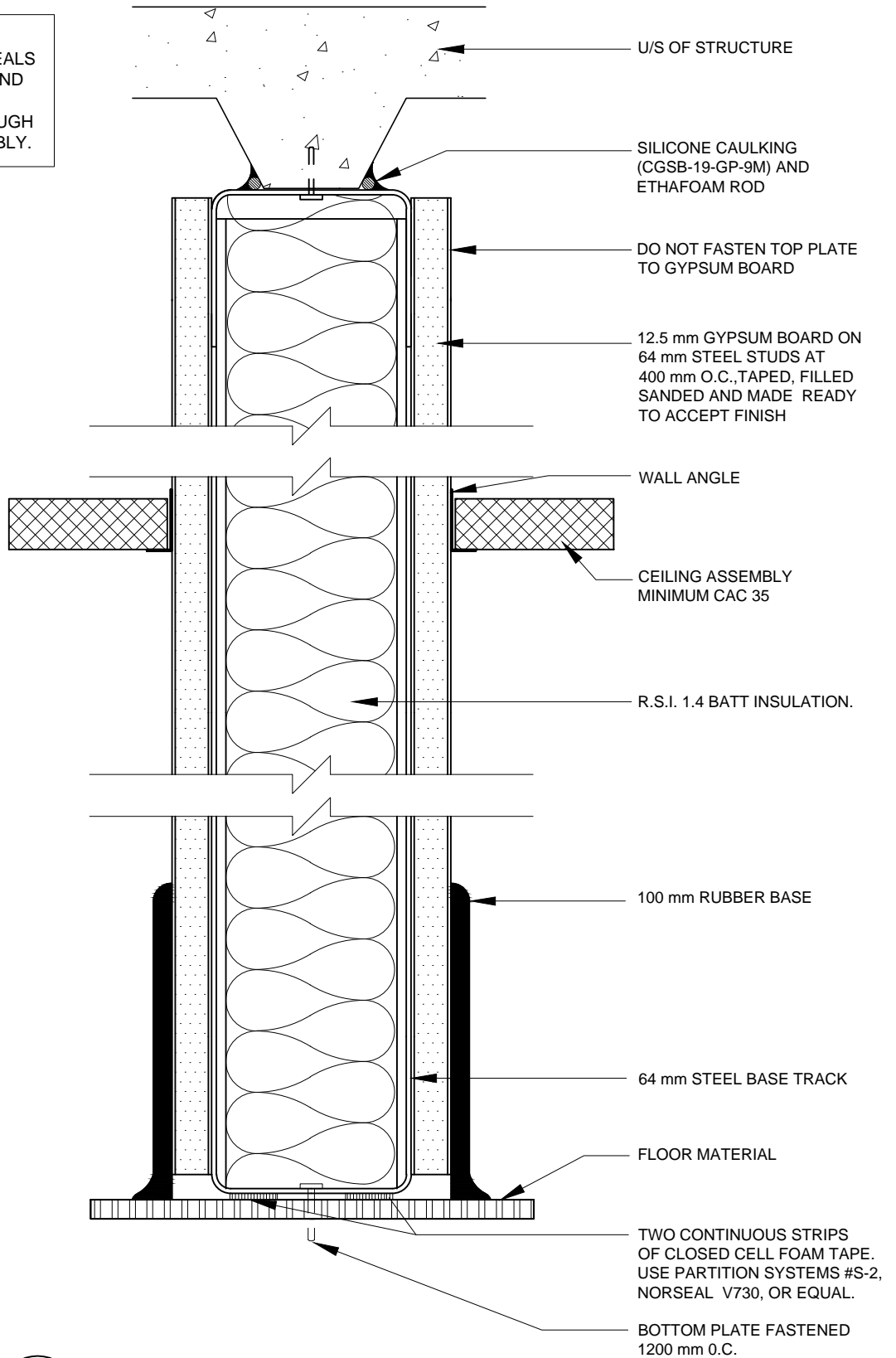


**NOTE:**  
 PROVIDE AIR TIGHT SEALS AROUND ALL PIPING AND OTHER MECHANICAL PENETRATIONS THROUGH WALL CEILING ASSEMBLY

**NOTE:**  
 CONSULTANT IS RESPONSIBLE FOR DETAILING FIRE RATED PARTITION AS APPLICABLE UNDER CODE.

**H** FIRE RATED PARTITION  
 SCALE: 1:2

**NOTE:**  
 PROVIDE AIR TIGHT SEALS  
 AROUND ALL PIPING AND  
 OTHER MECHANICAL  
 PENETRATIONS THROUGH  
 WALL CEILING ASSEMBLY.

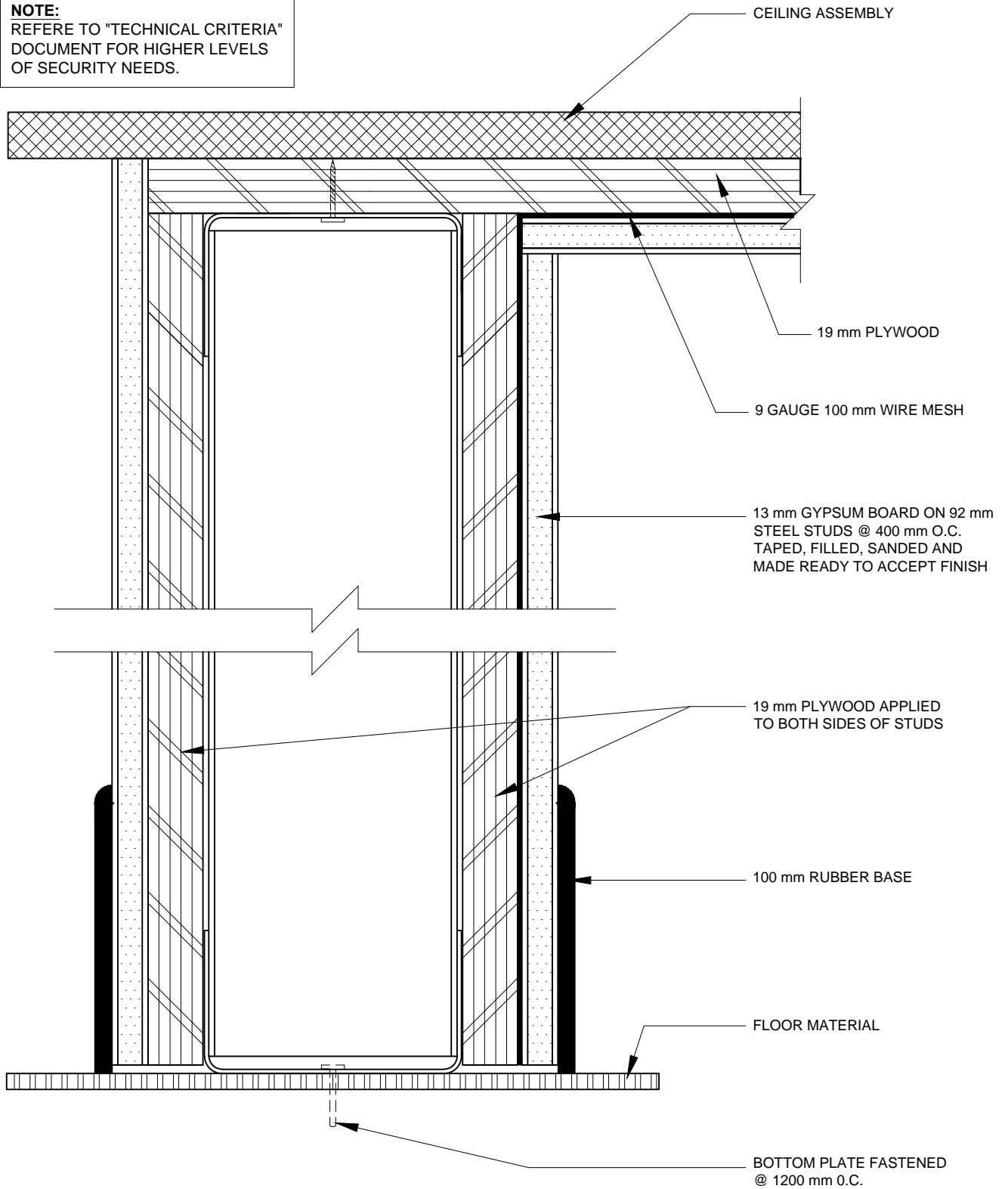


**GYPSUM BOARD PARTITION TO U/S OF DECK**

SCALE: 1:2

Log in: elia.gozdzik \goals\shared\INFRAS\CAP\CAP-TS\Interior\_Partition\_Details\1.dwg Dec 09, 2014 - 9:43am

**NOTE:**  
 REFERE TO "TECHNICAL CRITERIA"  
 DOCUMENT FOR HIGHER LEVELS  
 OF SECURITY NEEDS.



**GYPSUM BOARD/PLYWOOD PARTITION  
 AND CEILING - SECURE STORAGE**

**J**

SCALE: 1:2

Login: elia.gozdziak \goals\shared\INFRA\CAP\CAP-TS\Interior\_Partition\_Details\J.dwg Dec 09, 2014 - 9:44am

**Government of Alberta**  
 Infrastructure

**INTERIOR DETAILS**

INTERIOR DESIGN SECTION

DETAIL NUMBER

DRAWN BY  
 E. GOZDZIK

DATE  
 2014-11-28

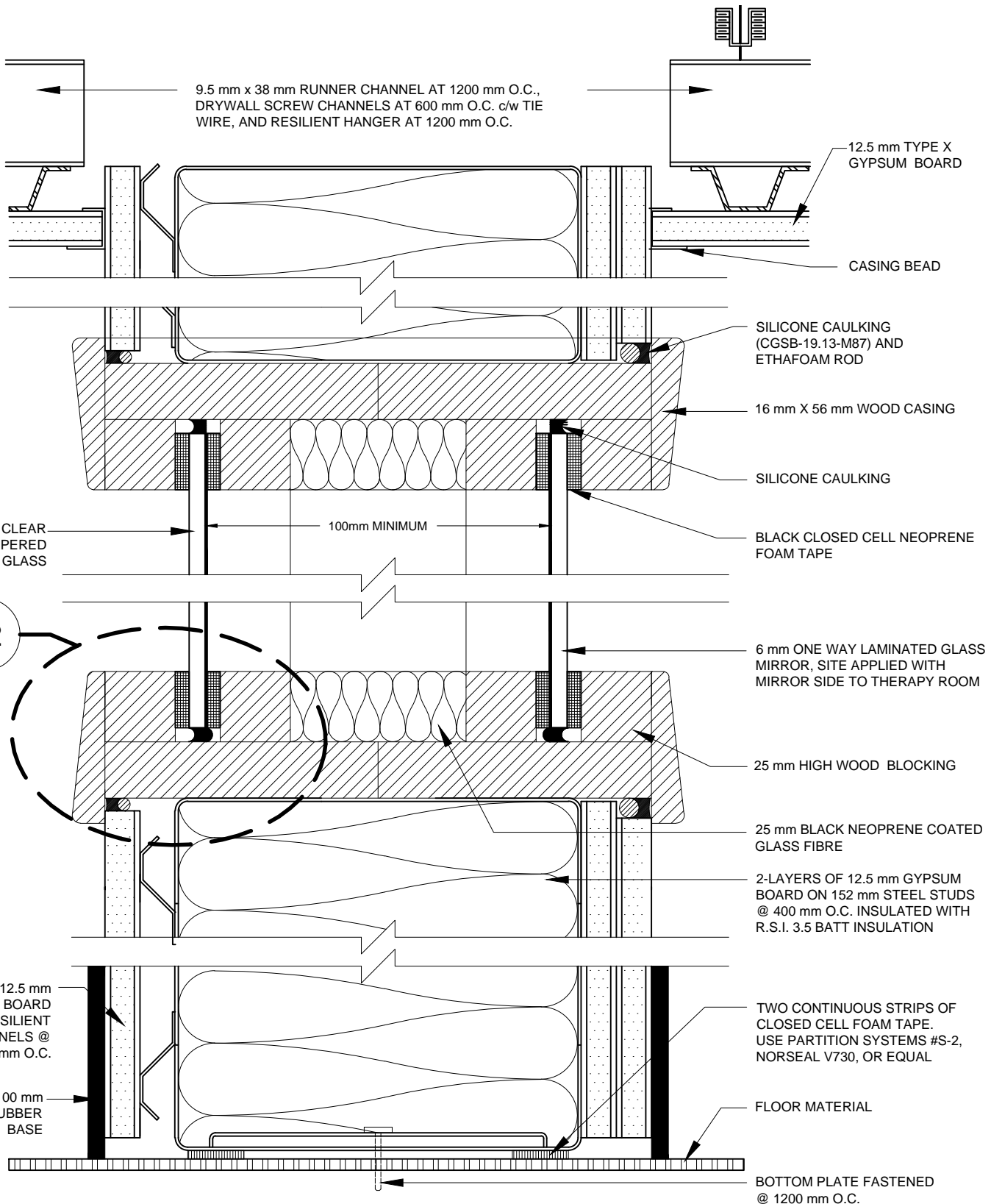
CHECKED BY  
 A. FARHALL

DATE  
 2014-11-28

**J**

Login: elia.gozdzik \goals\shared\INFRASCAP\CAP-TS\Interior\_Partition\_Details\K.dwg Dec.09.2014 - 9:51am

**K2**



**K1**

**GYPSUM BOARD PARTITION C/W GYPSUM BOARD CEILING - THERAPY/OBSERVATION ROOM**

SCALE: 1:2

**Government of Alberta**  
Infrastructure

**INTERIOR DETAILS**

INTERIOR DESIGN SECTION

DETAIL NUMBER

DRAWN BY  
E. GOZDZIK

DATE  
2014-11-28

CHECKED BY  
A. FARHALL

DATE  
2014-11-28

**K**



**NOTE:**  
 PREFINISH WOOD BLOCKING IN ORDER  
 TO PREVENT LEACHING OF THE  
 CAULKING INTO ADJACENT MATERIALS.

THERAPY SIDE - 6 mm ONE WAY  
 LAMINATED GLASS MIRROR  
 AND  
 OBSERVATION SIDE - 6 mm CLEAR  
 TEMPERED GLASS, REFER TO  
 PARTITION SECTION FOR  
 REPLACEMENT. GLASS SET ON  
 NEOPRENE SETTING BLOCKS AT 1/4  
 POINTS MINIMUM 6 mm THICK.

WOOD BLOCKING PAINTED BLACK  
 (25 mm HIGH)

25 mm BLACK (NEOPRENE)  
 COATED GLASS FIBRE DUCT  
 INSULATION (BLACK COATING  
 FACING UPWARDS) OR BLACK  
 OPEN-CELL FOAM. ADHERE TO  
 FRAME.

BLACK CLOSED CELL  
 NEOPRENE FOAM TAPE

25 mm HIGH WOOD  
 BLOCKING

16 mm X 56 mm WOOD  
 CASING

SILICONE CAULKING IN  
 THE CAVITY AROUND  
 THE PERIMETER OF  
 THE GLASS

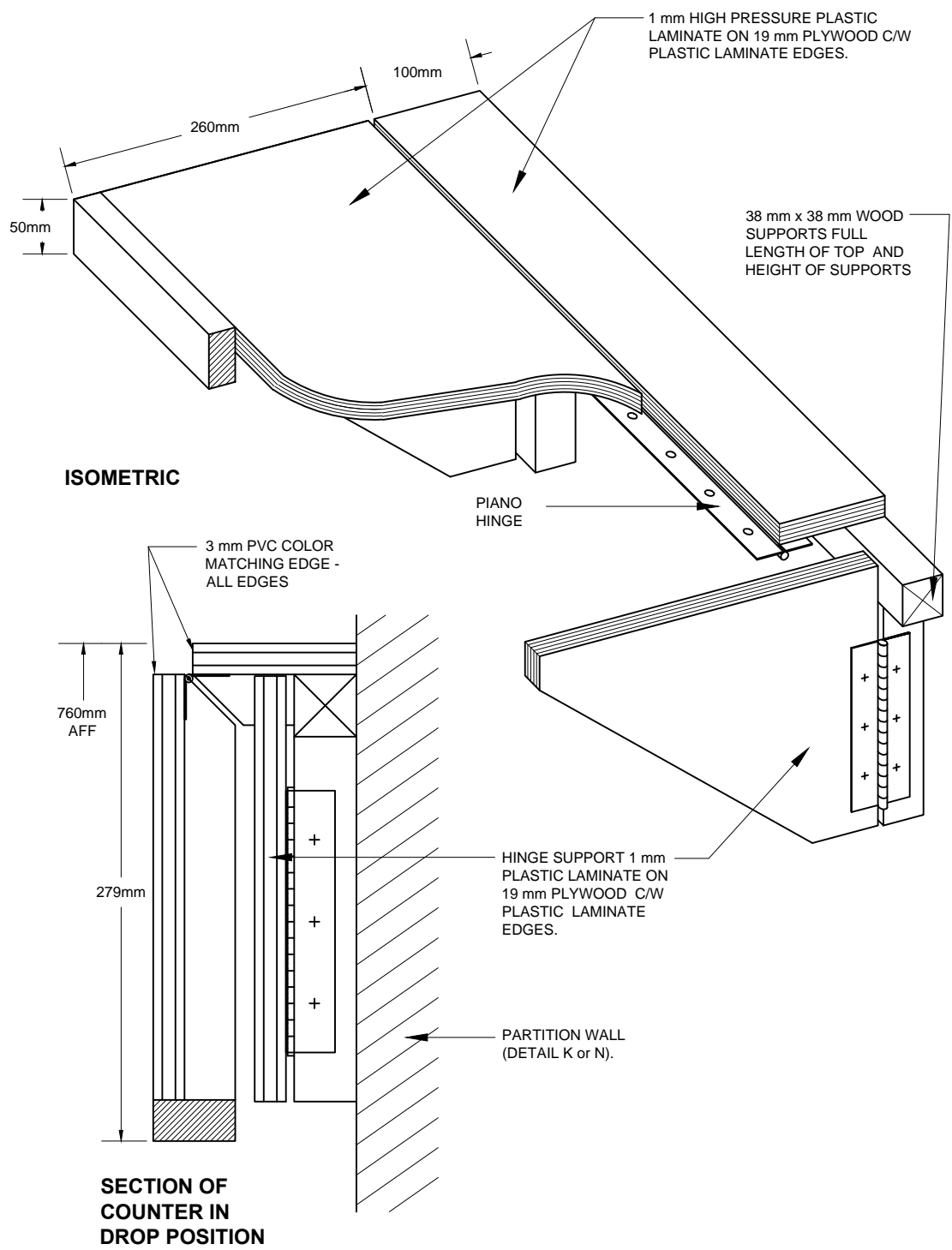
SILICONE CAULKING  
 (CGSB-19.13-M87)  
 AND ETHAFOAM ROD

RESILIENT FURRING  
 CHANNEL PLACED  
 ALONG THE  
 PERIMETER OF THE  
 ROUGH OPENNING

**K2** **GLAZING DETAIL - THERAPY/OBSERVATION ROOM**  
 SCALE: 1:1

Login: elia.gozdzik \goals\shared\INFRA\CAP\CAP-TS\Interior\_Partition\_Details\K.dwg Dec 09, 2014 - 9:56am

Log in: elia.gozdzik \goals\shared\INFRA\CAP\CAP-TS\Interior\_Partition\_Details\L.dwg Dec 09, 2014 - 9:57am



**L** **DROP DOWN COUNTER (OBSERVATION ROOM ONLY)**  
SCALE: NTS

**Government of Alberta**  
Infrastructure

**INTERIOR DETAILS**

INTERIOR DESIGN SECTION

DETAIL NUMBER

DRAWN BY  
E. GOZDZIK

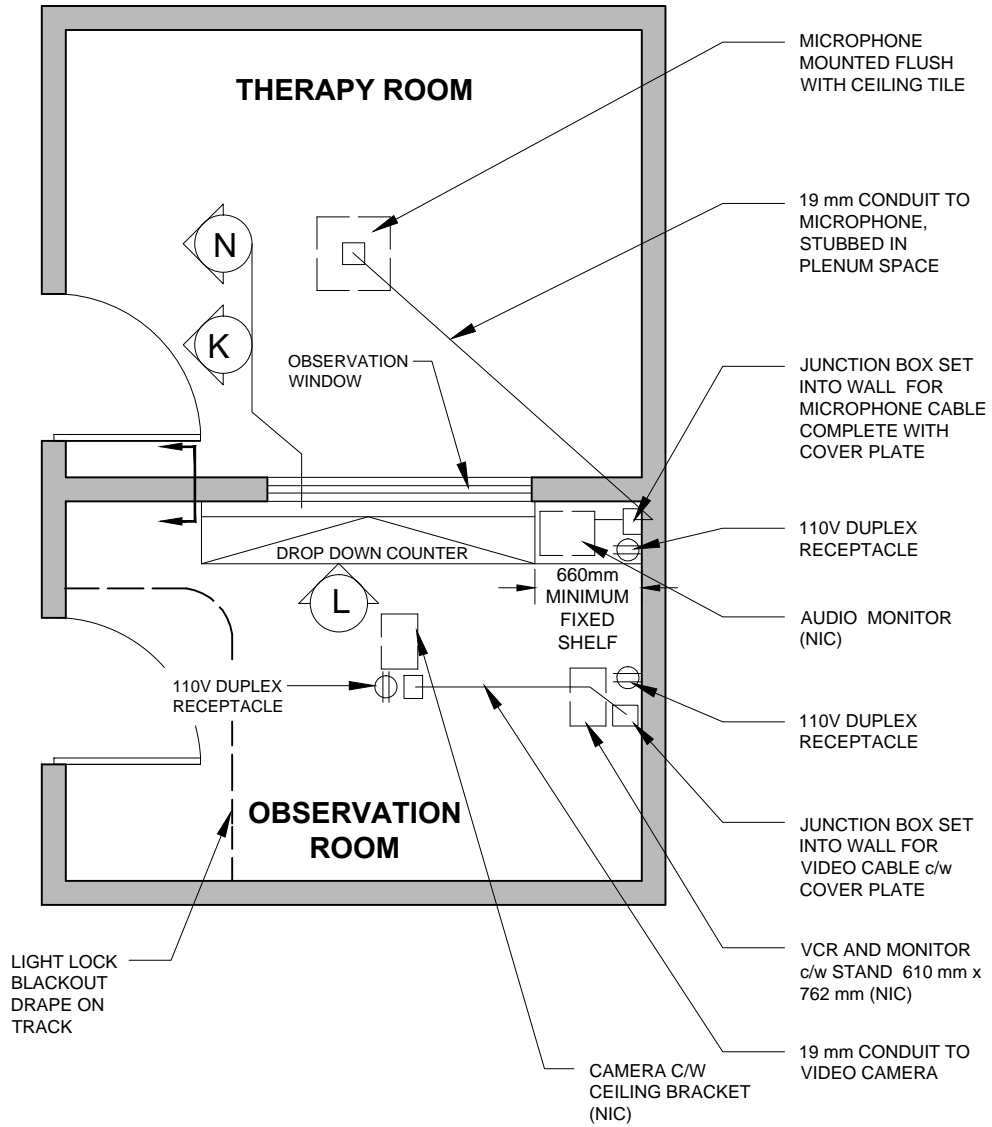
DATE  
2014-11-28

CHECKED BY  
A. FARHALL

DATE  
2014-11-28

**L**

Login: elia.gozdzik \goals\shared\INFRA\CAP\CAP-TS\Interior\_Partition\_Details\M.dwg Dec 09, 2014 - 9:57am



**M**

**CONDUIT & ELECTRICAL REQUIREMENTS FOR AUDIO SYSTEM (OBSERVATION/THERAPY ROOM)**

SCALE: NTS

ETHAFOAM ROD  
BACKER AND  
CAULKING

LOW MODULUS SILICONE  
CAULKING  
(CGSB-19.13-M87) TO  
BOTH SIDES

**NOTE:**  
PROVIDE AIR TIGHT SEALS AROUND  
ALL PIPING AND OTHER  
MECHANICAL PENETRATIONS  
THROUGH WALL CEILING ASSEMBLY.

CEILING ASSEMBLY  
WALL ANGLE

SILICONE CAULKING  
(CGSB-19.13-M87) AND  
ETHAFOAM ROD

16 mm X 56 mm WOOD CASING

SILICONE CAULKING

BLACK CLOSED CELL NEOPRENE  
FOAM TAPE

6 mm CLEAR  
TEMPERED  
GLASS

100mm MINIMUM

K2

6 mm ONE WAY LAMINATED GLASS  
MIRROR, SITE APPLIED WITH  
MIRROR SIDE TO THERAPY ROOM

25 mm HIGH WOOD BLOCKING

25 mm BLACK NEOPRENE COATED  
GLASS FIBRE OR BLACK OPEN CELL  
FOAM

1-LAYER OF 16 mm AND 1-LAYER OF  
12.5 mm GYPSUM BOARD ON  
152 mm STEEL STUDS @ 400 mm O.C  
INSULATED WITH R.S.I. 3.5 BATT  
INSULATION

12.5 mm  
GYPSUM BOARD  
ON RESILIENT  
CHANNELS @  
400 mm O.C.

100 mm  
RUBBER  
BASE

TWO CONTINUOUS STRIPS OF  
CLOSED CELL FOAM TAPE. USE  
PARTITION SYSTEMS #S-2,  
NORSEAL V730, OR EQUAL

FLOOR MATERIAL

BOTTOM PLATE FASTENED  
@ 1200 mm O.C.

N

**GYPSUM BOARD PARTITION, FULL HEIGHT  
(THERAPY/OBSERVATION ROOM)**

SCALE: 1:2

Login: elia.gozdzik \goals\shared\INFRASCAP\CAP-TS\Interior\_Partition\_Details\N.dwg Dec 09, 2014 - 9:58am

**Government of Alberta**  
Infrastructure

**INTERIOR DETAILS**

INTERIOR DESIGN SECTION

DETAIL  
NUMBER

DRAWN BY  
E. GOZDZIK

DATE  
2014-11-28

CHECKED BY  
A. FARHALL

DATE  
2014-11-28

**N**

**NOTE:**  
 PROVIDE AIRTIGHT SEALS  
 AROUND ALL MECHANICAL  
 PENETRATIONS THROUGH  
 ASSEMBLY. ALL JOINTS TO BE  
 TAPED AND FILLED.

SILICONE CAULKING  
 (CGSB-19.13-M87) TO  
 EACH SIDE

2 LAYERS 16 mm TYPE X GYPSUM  
 BOARD FASTENED TOGETHER AT  
 TOP AND AT T-BAR

CEILING ASSEMBLY. ALL JOINTS  
 WHERE CROSS-T'S PENETRATE  
 DRYWALL MUST BE SEALED WITH  
 CAULKING

ETHAFOAM ROD BACKER  
 AND CAULKING

R.S.I. 1.4 BATT INSULATION

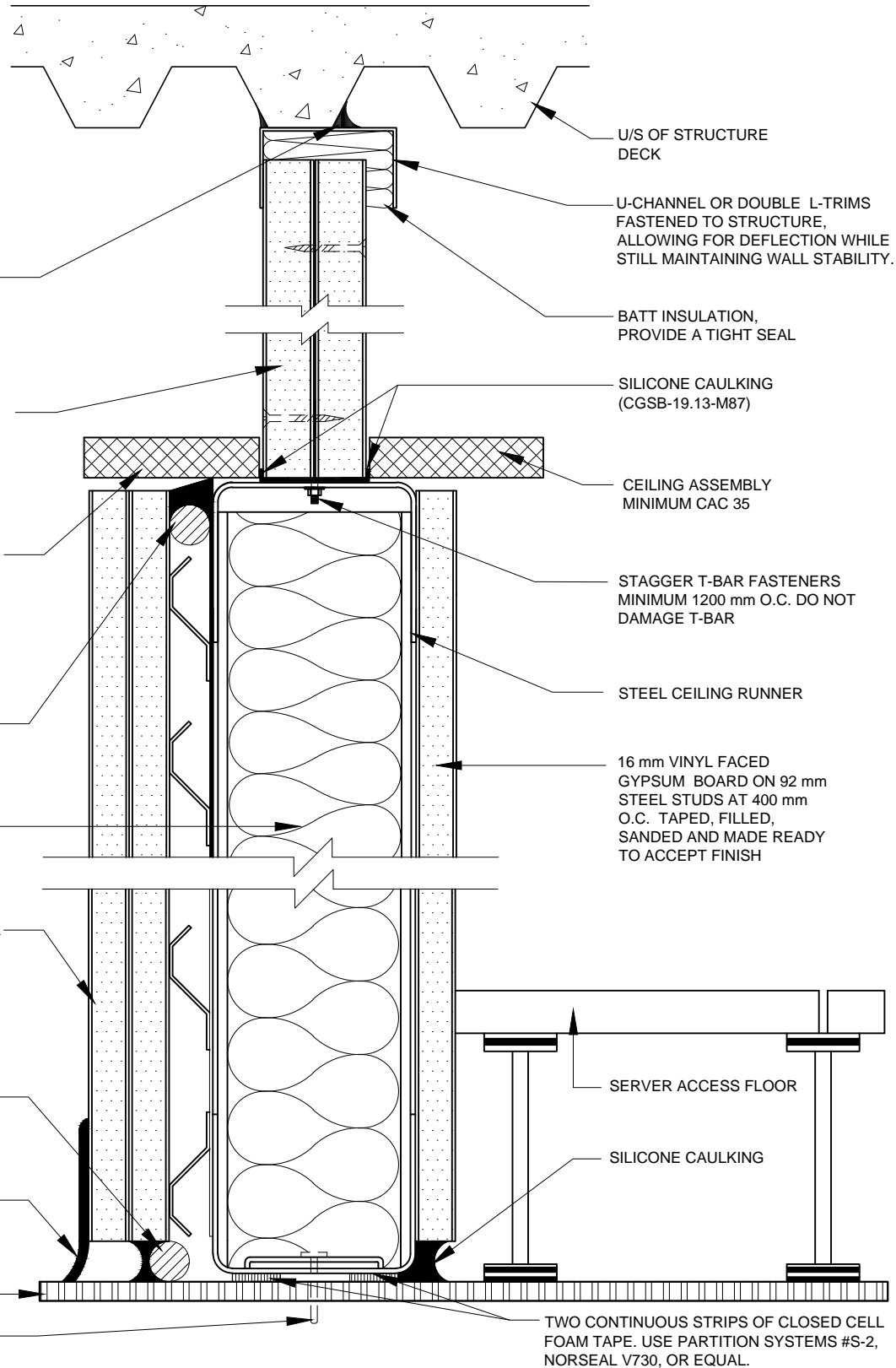
1-LAYER OF 12.5 mm AND 1-LAYER  
 OF 16 mm GYPSUM BOARD ON  
 METAL RESILIENT CHANNELS  
 @ 600 mm O.C. TAPED, FILLED,  
 SANDED AND MADE READY TO  
 ACCEPT FINISH

ETHAFOAM ROD BACKER  
 AND CAULKING

RUBBER BASE

FLOOR MATERIAL

BOTTOM PLATE FASTENED  
 AT 1200 mm O.C.



U/S OF STRUCTURE  
 DECK

U-CHANNEL OR DOUBLE L-TRIMS  
 FASTENED TO STRUCTURE,  
 ALLOWING FOR DEFLECTION WHILE  
 STILL MAINTAINING WALL STABILITY.

BATT INSULATION,  
 PROVIDE A TIGHT SEAL

SILICONE CAULKING  
 (CGSB-19.13-M87)

CEILING ASSEMBLY  
 MINIMUM CAC 35

STAGGER T-BAR FASTENERS  
 MINIMUM 1200 mm O.C. DO NOT  
 DAMAGE T-BAR

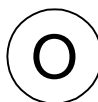
STEEL CEILING RUNNER

16 mm VINYL FACED  
 GYPSUM BOARD ON 92 mm  
 STEEL STUDS AT 400 mm  
 O.C. TAPED, FILLED,  
 SANDED AND MADE READY  
 TO ACCEPT FINISH

SERVER ACCESS FLOOR

SILICONE CAULKING

TWO CONTINUOUS STRIPS OF CLOSED CELL  
 FOAM TAPE. USE PARTITION SYSTEMS #S-2,  
 NORSEAL V730, OR EQUAL.

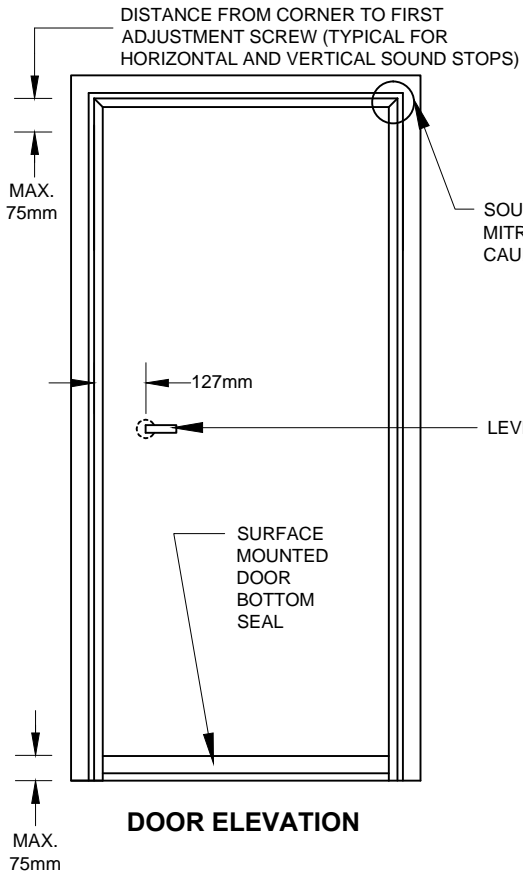


**GYPSUM BOARD PARTITION  
 C/W PLENUM SOUND BARRIER - SERVER ROOM**

SCALE: 1:2

Login: ela.gozdzik \goals\shared\INFRA\CAP-Interior\_Partition\_Details\O.dwg Dec 09, 2014 - 9:59am



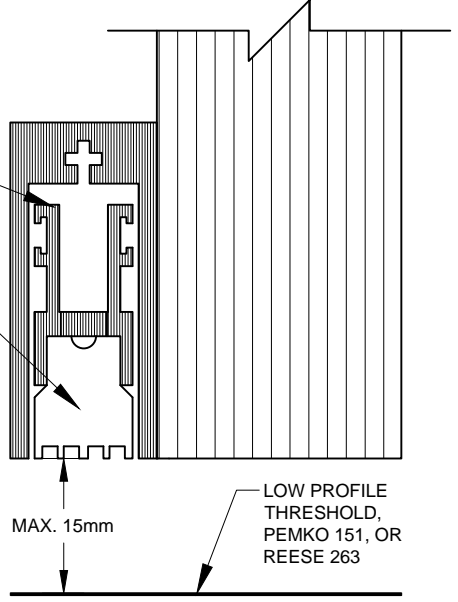


**NOTE:**

- USE KNOB WHERE A MINIMUM 127 mm BACKSET CAN BE SPECIFIED.
- USE A LEVER HANDLE WHERE BACKSET IS LESS THAN 127 mm.

ANODIZED ALUMINUM DOOR BOTTOM

CLOSED-CELL SPONGE NEOPRENE GASKET



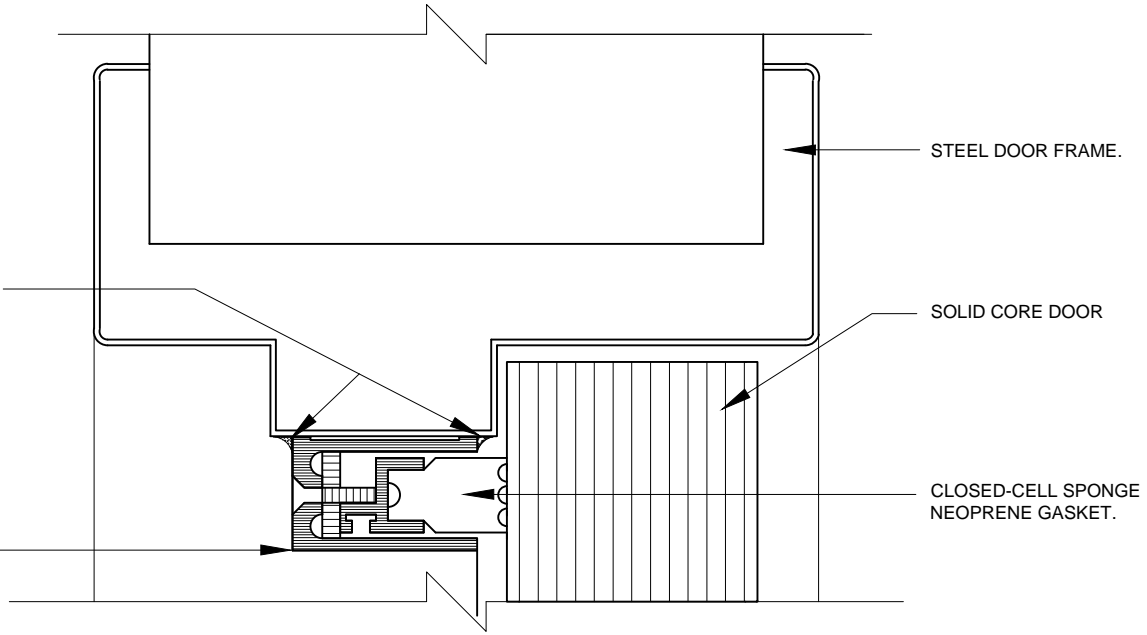
**AUTOMATIC DOOR BOTTOM DETAILS:**  
 DOOR BOTTOMS SHALL BE EITHER PEMKO 430, REESE 521, OR REESE 330

**SURFACE MOUNTED**

**NOTE:**  
 SOUND SEALS TO BE MITRED WHERE HORIZONTAL AND VERTICAL MEMBERS MEET

CAULK JOINT BETWEEN DOOR STOP AND SOUND SEAL WITH SILICONE CAULKING (CGSB-19-GP-9M)

ANODIZED ALUMINUM DOOR SEAL



**HEAD/JAMB SOUND SEAL DETAIL:**  
 SOUND SEAL SHALL BE REESE 599

**P SOUND - RATED DOOR SEALS**  
 SCALE: NTS